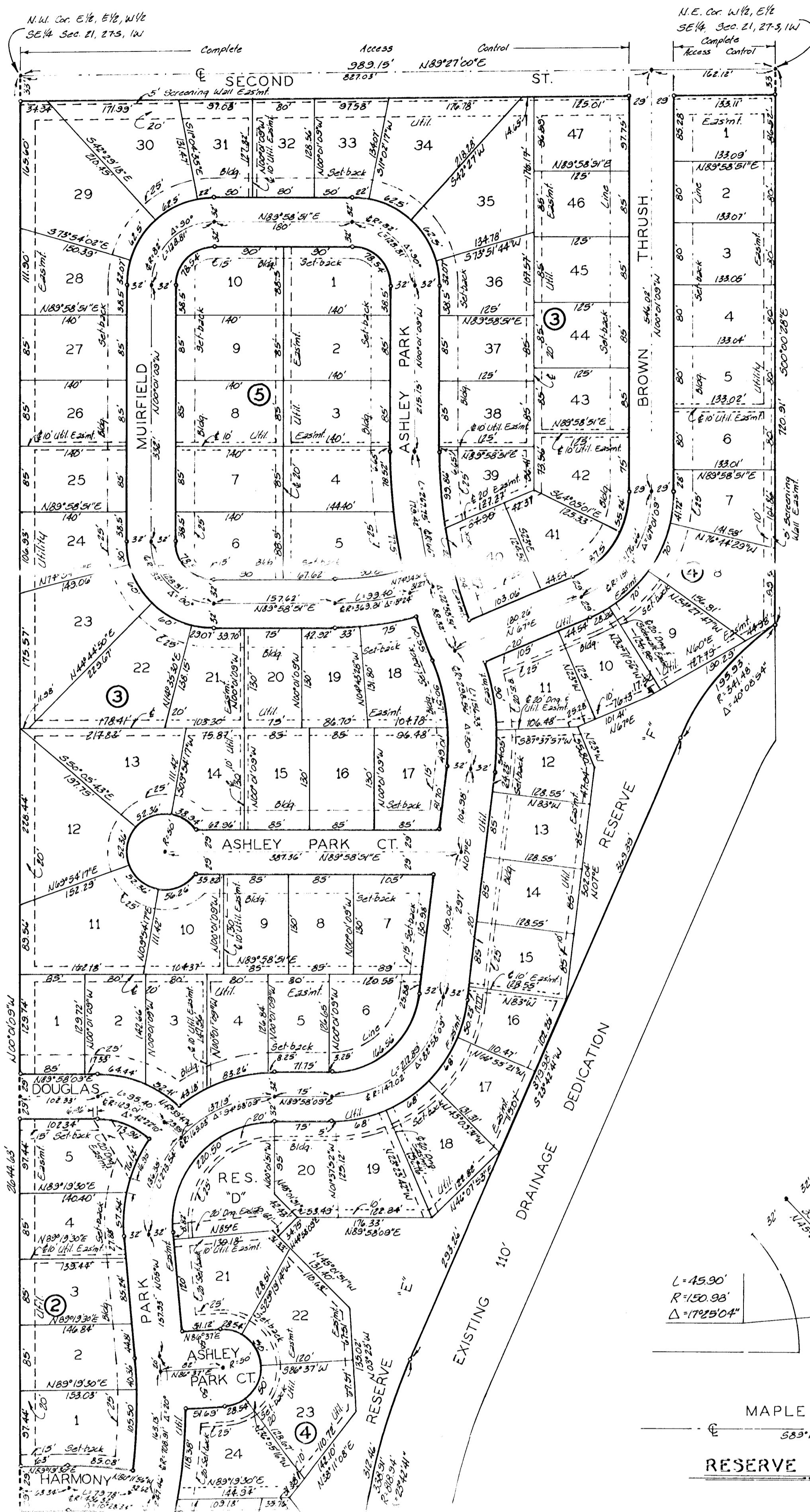


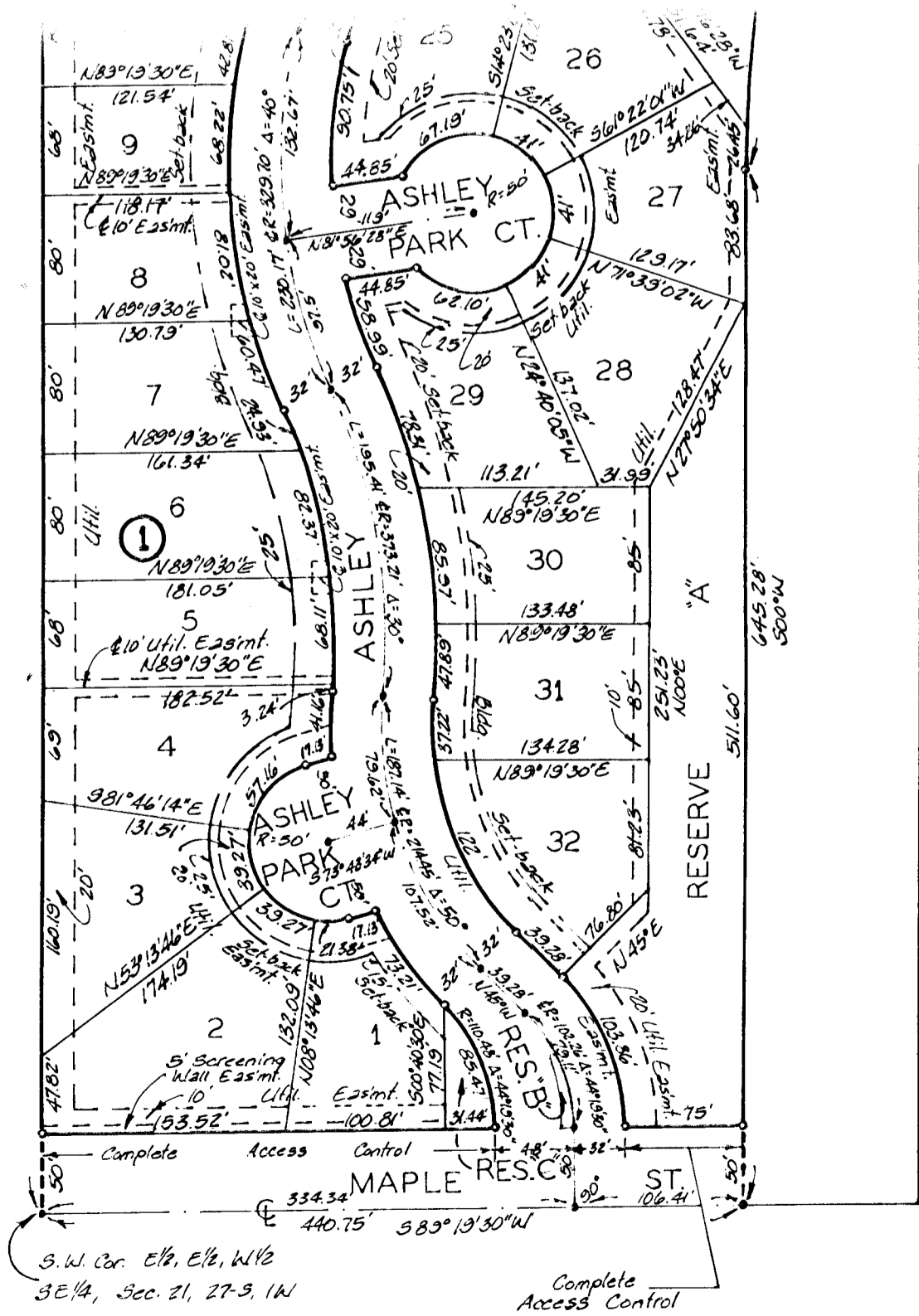
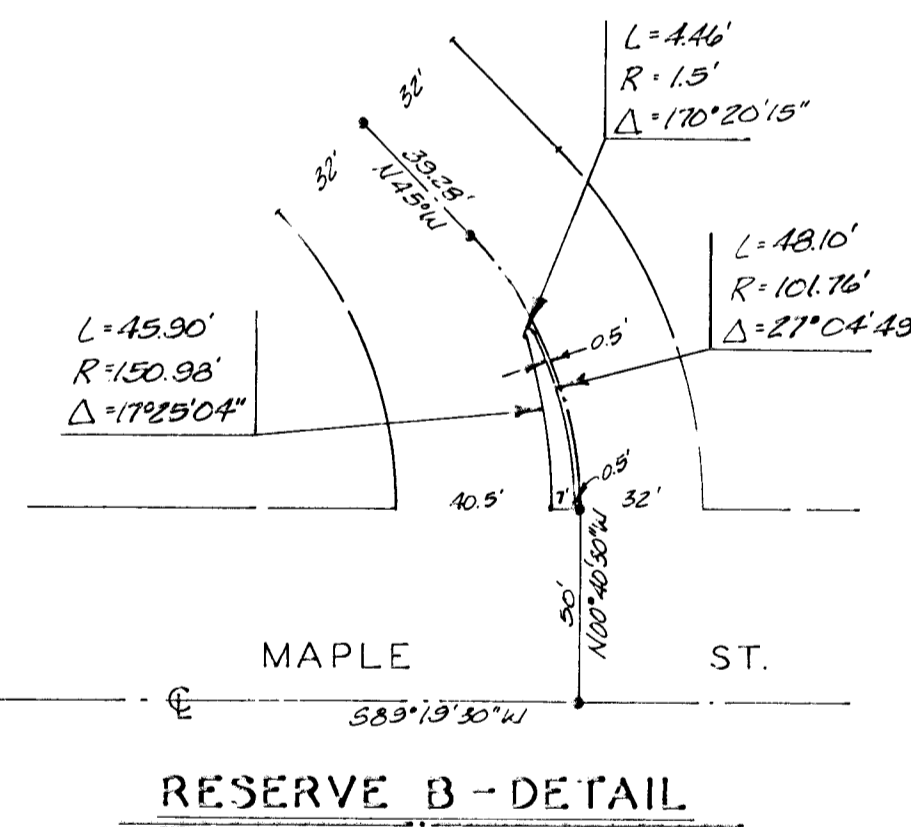
# ASHLEY PARK

AN ADDITION TO WICHITA, KANSAS



Area = 40.8791 Acres  
BENCH MARKS:

- #1 R.R. Spike in Power Pole  
21' S 140.5° E of S.W. Cor of ASHLEY PARK  
Elev = 1328.88 M.S.L.  
Elev = 141.48 City Datum
- #2 "I" Cut in top of Curb south side of Harmony St. 20' W of N.W. Cor of Lot 10, Bk 1, ASHLEY PARK  
Elev = 1328.86 M.S.L.  
Elev = 141.46 City Datum
- #3 "I" Cut in top of Curb north side of Douglas St. 20' W of S.W. Cor of Lot 1, Bk 1, ASHLEY PARK  
Elev = 1331.73 M.S.L.  
Elev = 144.33 City Datum



State of Kansas } S.S. We, Baughman Company, P.A. Surveyors in aforesaid county and state do hereby certify that we have surveyed and platted "ASHLEY PARK", an addition to Wichita, Kansas, and that the accompanying plat is a true and correct exhibit of the property surveyed, described as the E 1/2 of the E 1/4 of the W 1/4 of the SE 1/4 of Sec. 21, Twp. 27-S, R-1-W of the 6th P.M., Sedgewick County, Kansas and the W 1/2 of the E 1/4 of the SE 1/4 of said Sec. 21, lying west of the westerly line of the drainage dedication, recorded on Film 328 at Page 1040 and as extended south to the south line of said SE 1/4. Existing easements and dedications being vacated by virtue of K.S.A. 12-512(b).

24 Aug 1988  
Baughman Company, P.A.  
Mark A. Sawyer Surveyor

Know all men by these presents that we, the undersigned, have caused the land described in the surveyors certificate to be platted into lots, blocks, streets, and Reserves to be known as "ASHLEY PARK", an addition to Wichita, Kansas. Reserves "A", "E" and "F" are hereby reserved for walks, and recreational equipment. Reserve "B" and "C" are hereby reserved for landscaping and entry features. Reserve "D" is hereby reserved for recreational purposes, private swimming pool, gazebos, walks, restrooms for the pool area and off-street parking. All reserves shall be owned and maintained by the homeowners association for the addition. The utility easements are hereby granted for the construction and maintenance of all public utilities. The drainage easements are hereby granted as indicated for drainage purposes. The sidewalk easement is hereby granted as indicated for sidewalk purposes. The 5 foot wall easements are hereby granted as indicated for the construction and maintenance of a private wall, and utilities are allowed to cross these easements. The streets are hereby dedicated to and for the use of the public. All abutters rights of access to or from Maple Street over and across the south line of Lots 1 and 2, Block 1 and Reserves "A" and "C" and to or from Second Street over and across the north line of Lots 29, 30, 31, 32, 33, 34, 35, and 47, Block 3, and Lot 1, Block 4, are hereby granted to the City of Wichita, Kansas. Minimum Building Pad Elevation for Lots 8, 9, 10, 11, 12, 13, 14, 15, 16, 17, 18, 19, 20, 22, 23, 26, 27, 28, 30, 31 and 32, Block 4, shall be M.S.L., being City Datum.

J. W. Russell, Inc.  
J. W. Russell, President

State of Kansas } S.S. The foregoing instrument acknowledged before me this 25th day of August, 1988, by J. W. Russell, President of J. W. Russell, Inc., on behalf of the corporation.

My Appt. Exp. 7-13-1991  
Ann Atzke Notary Public

This plat of "ASHLEY PARK", an addition to Wichita, Kansas, has been submitted to and approved by the Wichita-Sedgewick County Metropolitan Area Planning Commission, Wichita, Kansas.  
Dated this 25th day of August, 1988.  
Wichita-Sedgewick County Metropolitan Area Planning Commission

Elton Parsons, Chairman

This plat approved and all dedications shown hereon accepted by the City Council of the City of Wichita, Kansas, this 25th day of August, 1988.

Sheldon Kamen, Mayor  
Dale E. Rea, Deputy City Clerk  
Entered on transfer record this 25th day of August, 1988.  
Don Wright, County Clerk

We, the undersigned, holders of a mortgagage on the above described property do hereby consent to the plat of "ASHLEY PARK", an addition to Wichita, Kansas.  
Columbia Savings  
Sam E. Trammel, Vice-President

State of Kansas } S.S. The foregoing instrument acknowledged before me this 25th day of August, 1988, by Sam E. Trammel, Vice-President of Columbia Savings, on behalf of the corporation.  
My Appt. Exp. 1-30-89  
Sidney A. Long, Notary Public

State of Kansas } S.S. This is to certify that this plat has been filed for record in the office of the Register of Deeds this 25th day of August, 1988, at 10:00 o'clock P.M., and is duly recorded.  
Pat Keltner, Register of Deeds  
Ed Reza, Deputy