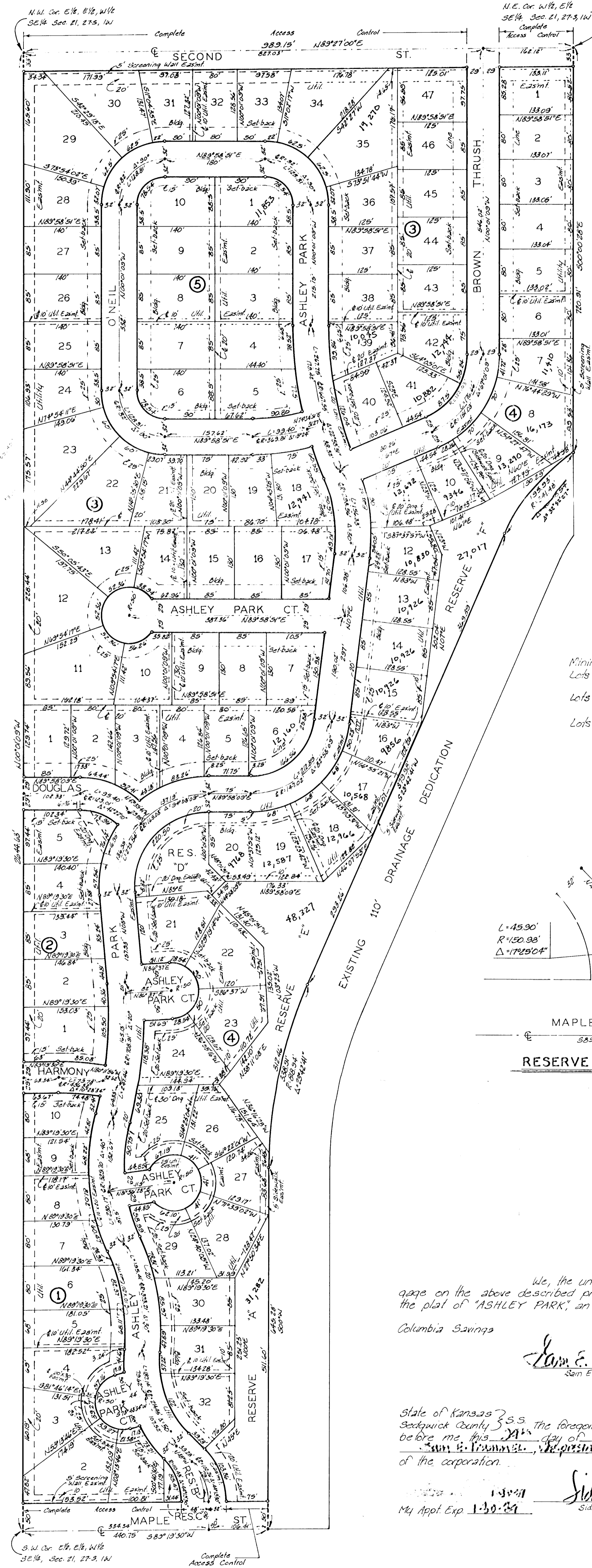


Ashley Park

ASHLEY PARK

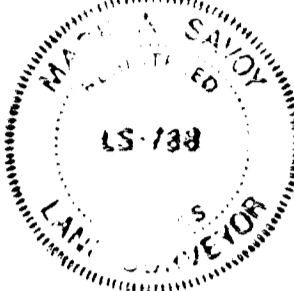
AN ADDITION TO WICHITA, KANSAS



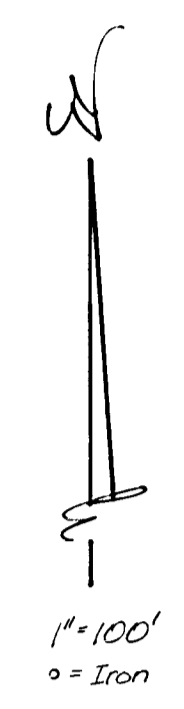
State of Kansas } S.S. We, Baughman Company, P.A. Surveyors
 Sedgewick County } do hereby certify that we have surveyed and plotted "ASHLEY PARK", an addition to Wichita, Kansas, and that the accompanying plat is a true and correct exhibit of the property surveyed, described as the E 1/2 of the E 1/4 of the W 1/4 of the SE 1/4 of Sec 21, Twp 27-S, R-1-W of the 6th P.M., Sedgewick County, Kansas and the W 1/2 of the E 1/4 of the SE 1/4 of said Sec 21, lying west of the westerly line of the drainage dedication, recorded on Film 328 at Page 1040 and as extended south to the south line of said SE 1/4. Existing easements and dedications being vacated by virtue of K.S.A. 12-512(b).

24 Aug 1988

Baughman Company, P.A.



Mark A. Sauer Surveyor
 Mark A. Sauer



BENCH MARKS:

- #1 R.R. Spike in Power Pole north side of Maple St. 21' S 140.5° E of S.W. Cor of ASHLEY PARK Elev = 1328.88 M.S.L. Elev = 141.48 City Datum
- #2 "I" Cut in top of Curb south side of Harmony St. BK 1, ASHLEY PARK Elev = 1328.86 M.S.L. Elev = 141.46 City Datum
- #3 "I" Cut in top of Curb north side of Douglas St. 20' N of S.W. Cor of Lot 1, BK 3, ASHLEY PARK Elev = 1331.73 M.S.L. Elev = 144.33 City Datum

Minimum Pad Elevations:
 Lots 8 thru 20, Bk 4 141.5 City Datum
 1328.9 M.S.L.
 140.5 City Datum
 1327.9 M.S.L.
 Lots 21 thru 29, Bk 4 140.0 City Datum
 1321.4 M.S.L.

Know all men by these presents that we, the undersigned, have caused the land described in the surveys certificate to be platted into lots, blocks, streets and Reserves to be known as "ASHLEY PARK", an addition to Wichita, Kansas. Reserves "A", "E" and "F" are hereby reserved for drainage purposes, open space, landscaping, gazebos, walks, and recreational equipment. Reserve "B" and "C" are hereby reserved for landscaping and entry features. Reserve "D" is hereby reserved for recreational purposes, private swimming pool, gazebos, walks, restrooms for the pool area and off-street parking. All reserves shall be owned and maintained by the homeowners association for the addition. The utility easements are hereby granted for the construction and maintenance of public utilities. The drainage easements are hereby granted as indicated for drainage purposes. The sidewalk easement is hereby granted as indicated for sidewalk purposes. The 5 foot wall easements are hereby granted as indicated for the construction and maintenance of a private wall, and utilities are allowed to cross these easements. The streets are hereby dedicated to and for the use of the public. All abutters rights of access to or from Maple Street over and across the south line of Lots 1 and 2, Block 1 and Reserves "A" and "C" and to or from Second Street over and across the north line of Lots 29, 30, 31, 32, 33, 34, 35 and 47, Block 3, and Lot 1, Block 4, are hereby granted to the City of Wichita, Kansas. Minimum Building Pad Elevation for Lots 8, 9, 10, 11, 12, 13, 14, 15, 16, 17, 18, 19 and 20, Block 4 shall be 141.5 City Datum (1328.9 M.S.L.) and for Lots 21, 22, 23, 24, 25, 26, 27, 28 and 29, Block 4, shall be 140.0 City Datum (1327.9 M.S.L.) and for Lots 30, 31 and 32, Block 4, shall be 140.0 City Datum (1321.4 M.S.L.).

J. W. Russell, Inc.
J. W. Russell, President

State of Kansas } S.S. The foregoing instrument acknowledged before me this 25th day of August, 1988, by J. W. Russell, President of J. W. Russell, Inc., on behalf of the corporation.

J. W. Russell Notary Public
 My Appt. Exp. 7-13-1991

This plat of "ASHLEY PARK", an addition to Wichita, Kansas, has been submitted to and approved by the Wichita-Sedgewick County Metropolitan Area Planning Commission, Wichita, Kansas.
 Dated this 1st day of August, 1988,
 Wichita-Sedgewick County Metropolitan Area Planning Commission

Ellen Parsons Chairman
Marvin B. Rowl Secretary

This plat approved and all dedications shown hereon accepted by the City Council of the City of Wichita, Kansas, this day of , 198 .

Steve L. Winkler Vice Mayor
Dee E. Rea Deputy City Clerk

Entered on transfer record this day of , 198 .
Don Wright County Clerk

We, the undersigned, holders of a mort-
 gage on the above described property do hereby consent to
 the plat of "ASHLEY PARK", an addition to Wichita, Kansas.
Columbia Savings
Sam E. Thumel, Vice-Pres.

State of Kansas } S.S. The foregoing instrument acknowledged before me this 21st day of August, 1988, by Sam E. Thumel, Vice-President of Columbia Savings, on behalf of the corporation.
Sam E. Thumel Notary Public
 My Appt. Exp. 1-30-89

State of Kansas } S.S. This is to certify that this plat has been filed for record in the office of the Register of Deeds this day of , 198 , at o'clock M., and is duly recorded.
Pat Kaiter Register of Deeds
Ed Reas Deputy

