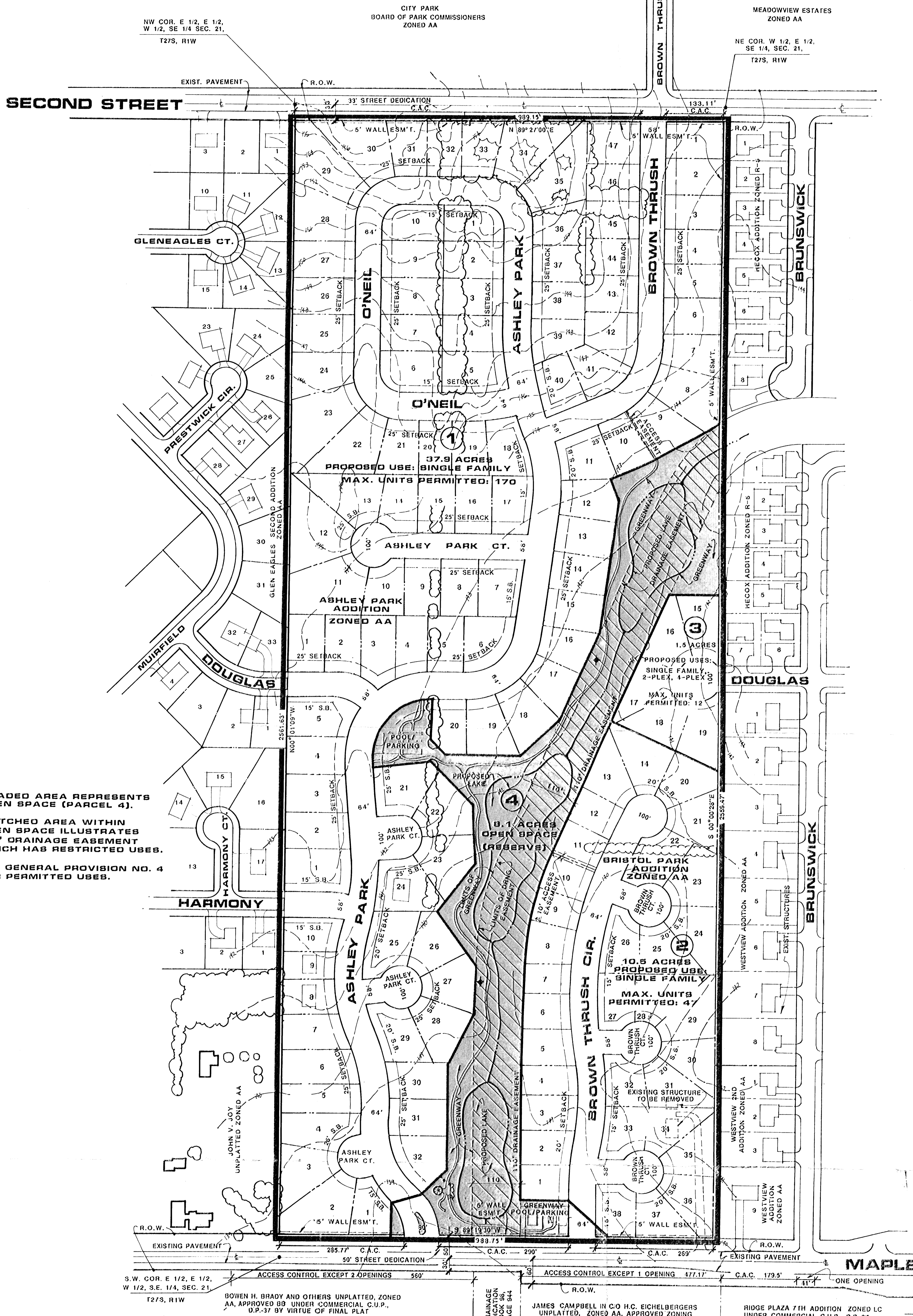
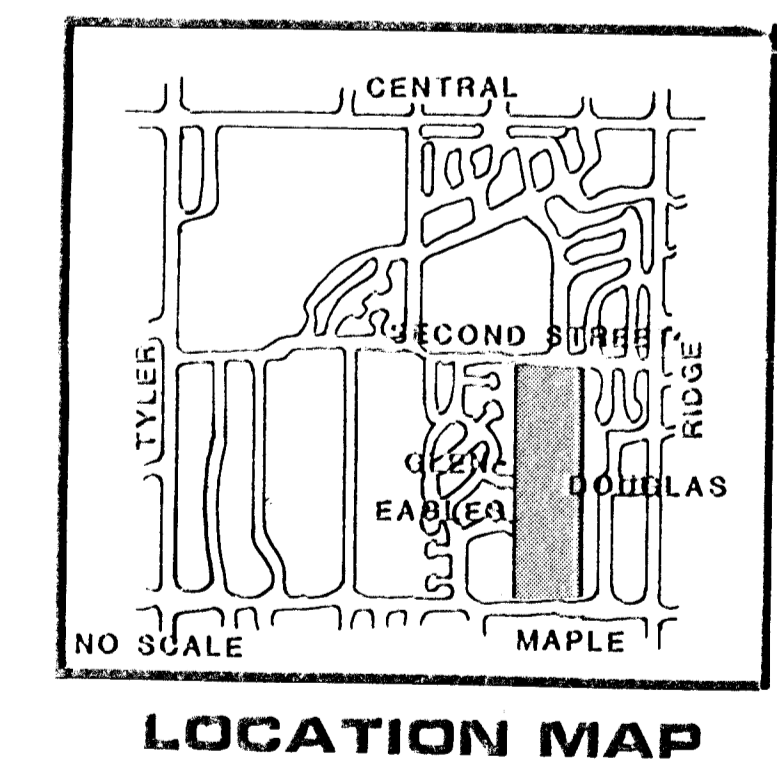


GENERAL PROVISIONS



**NOTE:**  
 1) SHADED AREA REPRESENTS OPEN SPACE (PARCEL 4).  
 2) HATCHED AREA WITHIN OPEN SPACE ILLUSTRATES 110' DRAINAGE EASEMENT WHICH HAS RESTRICTED USES.  
 SEE GENERAL PROVISION NO. 4 FOR PERMITTED USES.



**RESIDENTIAL COMMUNITY UNIT PLAN, D.P.- 189**  
**ASHLEY PARK**

**TOTAL ACRES = 58.13**  
 (60.01 GROSS ACRES INCLUDING MAPLE STREET 50' DEDICATION AND 2ND STREET 33' DEDICATION)  
 CONTOUR INTERVAL = 1'  
 SCALE: 1" = 100.0'

OWNER: J.W. RUSSELL 443 N. MAIZE ROAD WICHITA, KS. 67212 316-722-2417 AND 31111 EST/ATE IN O/O LEON STITT 2531 GREENWOOD WICHITA, KS. 67218 316-265-1435 DATE: 2/10/99



**BILL G. YUNG DESIGN**  
 1912 E. 23RD STREET NORTH WICHITA, KS 67220 316-893-5567