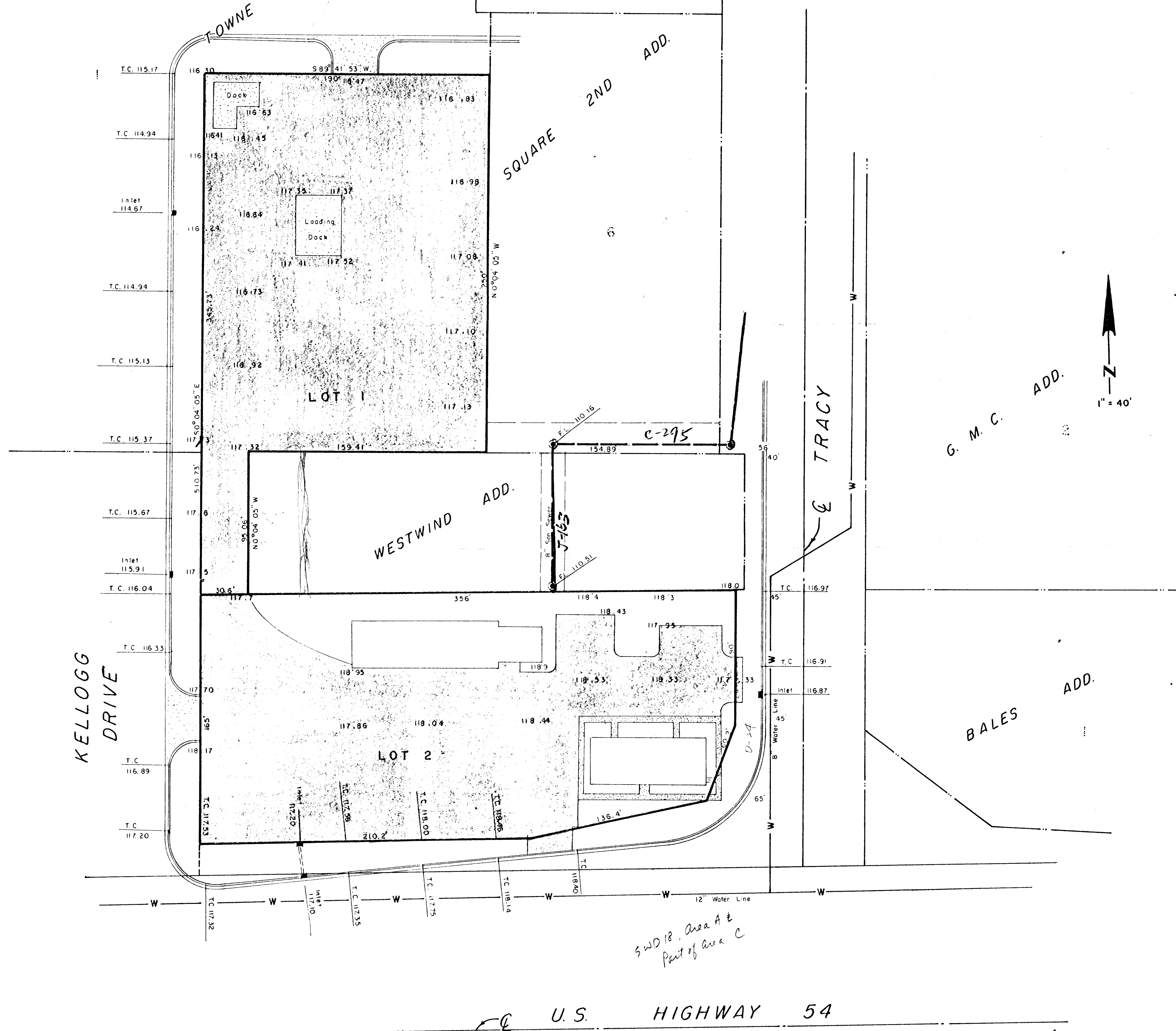
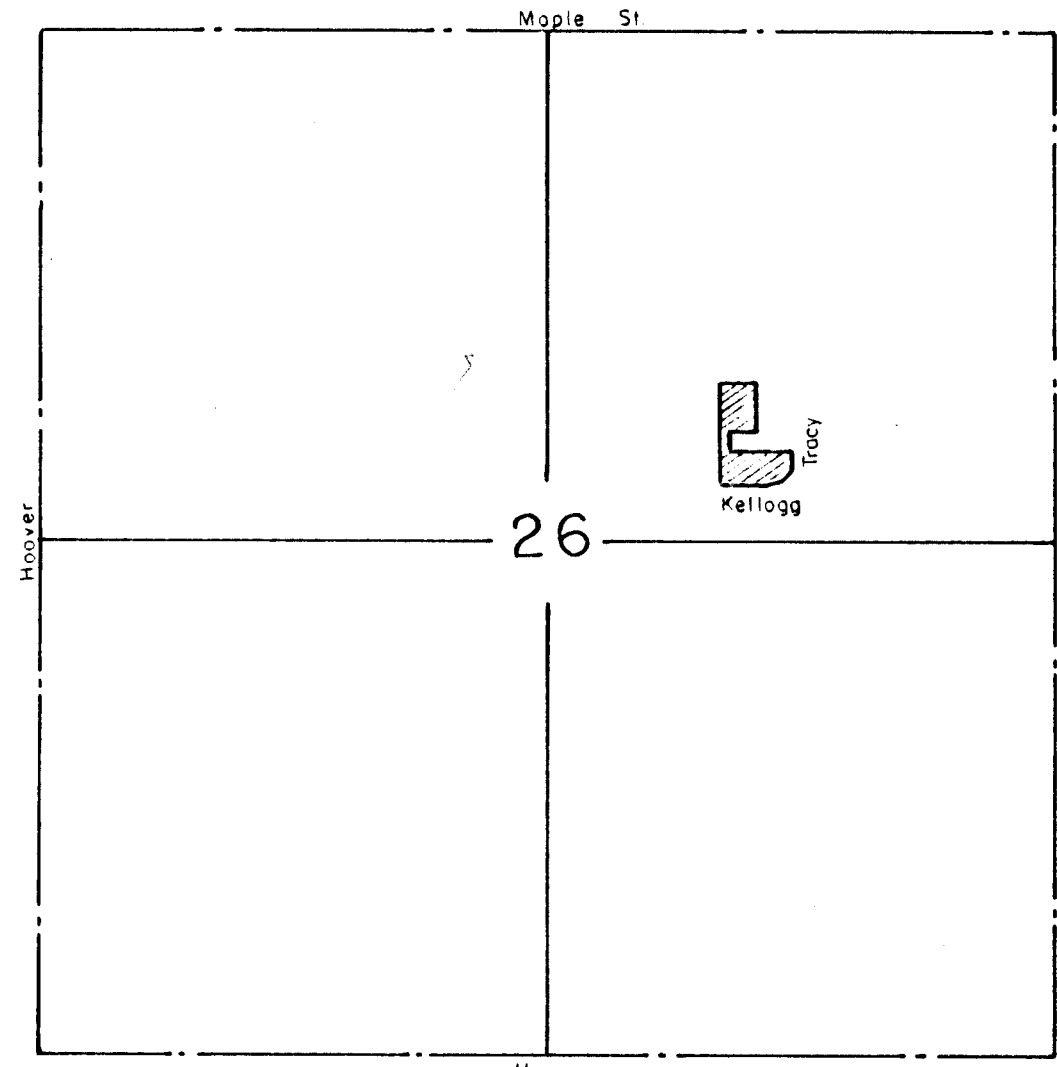


PRELIMINARY PLAT
 R. E. BOXBERGER'S FINAL EDITION

WICHITA, SEDGWICK COUNTY, KANSAS



B.M. - ELEV. 116.97 : " ON TOP CURB ON WEST
 SIDE AT THE NE COR.
 CAPTION PROPERTY.



VICINITY MAP
 1" = 1000'

FOR: DEPARTMENT OF TRANSPORTATION

LOWELL D. HIGH, L.S.
 1542 S. ST. FRANCIS
 WICHITA, KANSAS 67211

TOPO MADE AUGUST 11, 1987