

SKETCH PLAT

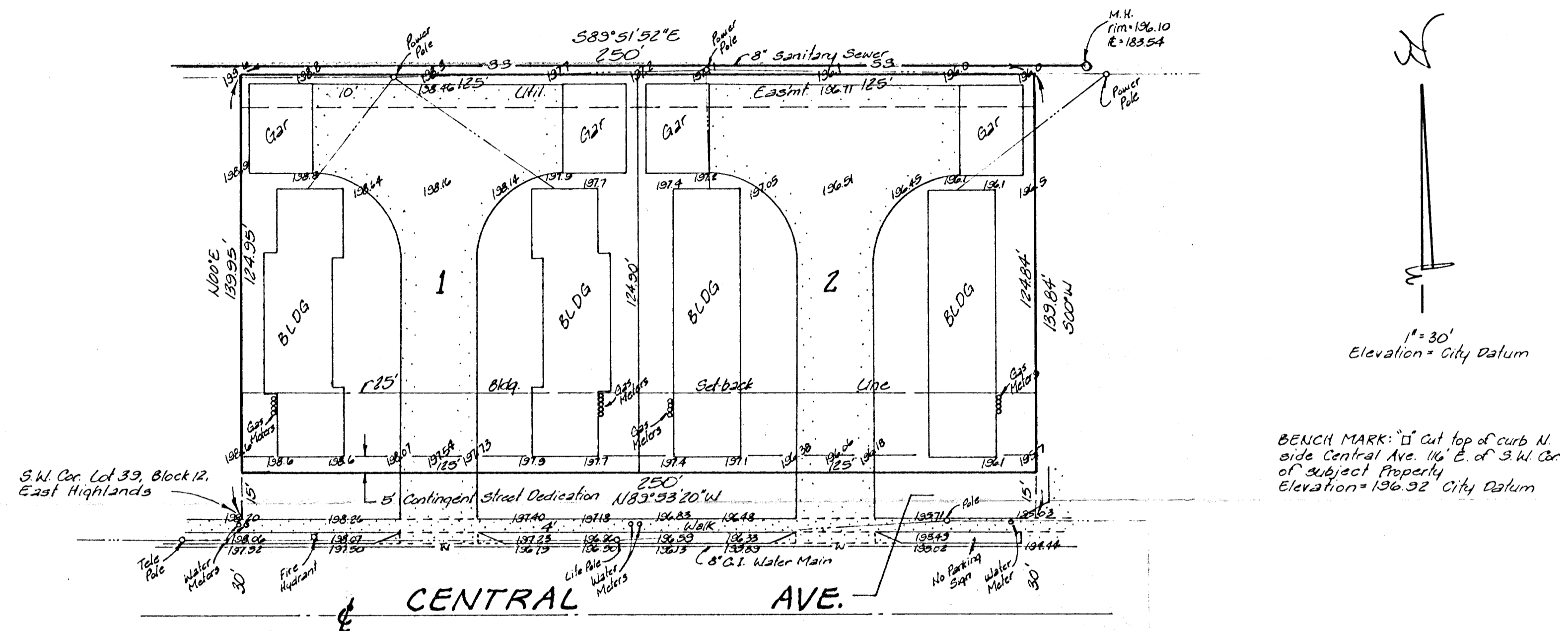
CATHERINE BOYD ADDITION

REPLAT OF LOTS 39, 40, 41, 42, 43, 44, 45, 46, 47 AND 48,
BLOCK 12, EAST HIGHLANDS, SEDGWICK COUNTY, KANSAS

OWNER: MIKE BOYD

DRAINAGE PLAN

BAUGHMAN COMPANY, P.A.
SURVEYING & ENGINEERING
316-262-7271 • 315 ELLIS • WICHITA, KANSAS 67211
8 July 1988



SKETCH PLAT

CATHERINE BOYD ADDITION

REPLAT OF LOTS 39, 40, 41, 42, 43, 44, 45, 46, 47 AND 48,
BLOCK 12, EAST HIGHLANDS, SEDGWICK COUNTY, KANSAS

OWNER: MIKE BOYD