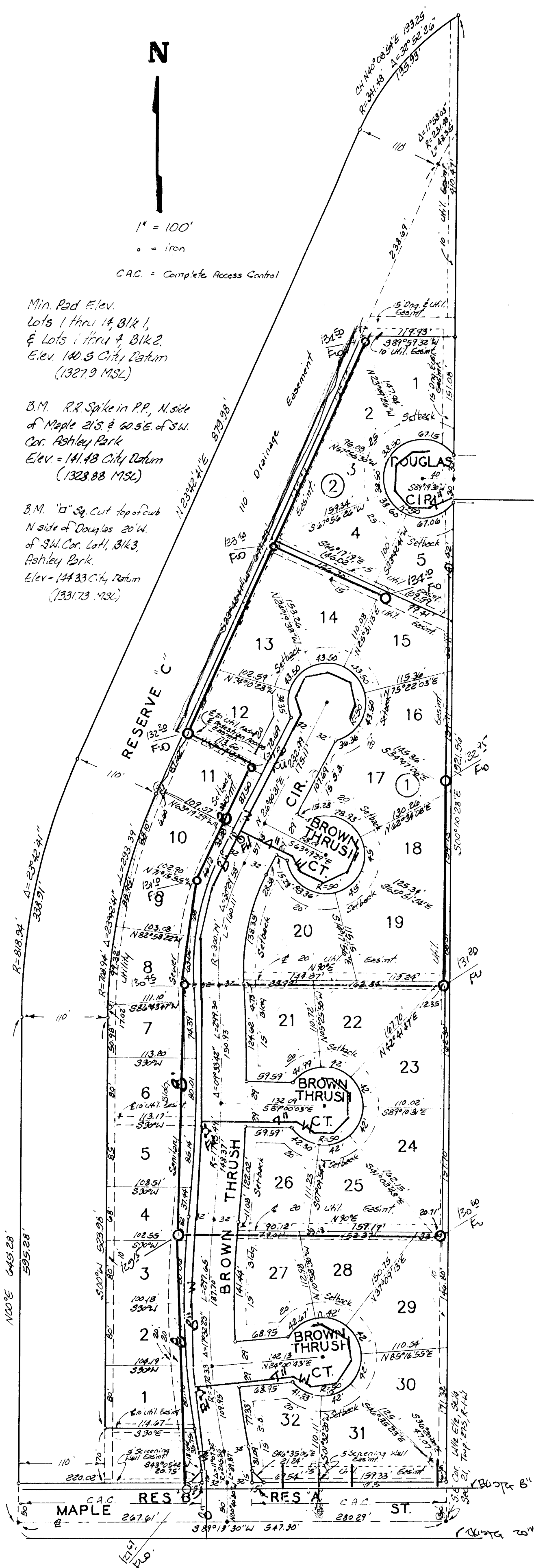


# BRISTOL PARK

AN ADDITION TO WICHITA, KANSAS.



1" = 100'  
 • = iron  
 C.A.C. = Complete Access Control

Min. Rad. Elev.  
 Lots 1 thru 4, Blk 1,  
 & Lots 1 thru 4, Blk 2,  
 Elev. 140.5 City Datum  
 (1327.9 MSL)

B.M. RR Spike in P.P. N. side  
 of Maple St. & 60.5 E. of S.W.  
 Cor. Ashley Park  
 Elev. = 141.18 City Datum  
 (1328.88 MSL)

B.M. 10" Sq. Cut Asphalt  
 N. side of Douglas Cir. 20' W.  
 of S.W. Cor. Lot 1, Blk 3,  
 Ashley Park  
 Elev. = 144.33 City Datum  
 (1331.73 MSL)

State of Kansas, ss We, Baughman Company, P.A., Surveyors  
 Sedgewick County, ss do hereby certify that we have  
 in aforesaid county and state do hereby certify that we have  
 surveyed and platted "BRISTOL PARK", an Addition to  
 Wichita, Kansas and that the accompanying plat is a  
 true and correct exhibit of the property surveyed, desc-  
 ribed as that part of the W 1/2 of the E 1/4 of the SE 1/4  
 of Sec. 21, Twp. 27 S, R. 1 W of the 6th P.M., Sedgewick  
 County, Kansas, lying east of the westerly line of the  
 drainage dedication, recorded on Film 328 at page 1040.  
 The drainage dedication, recorded on Film 328  
 at page 1040 and all other existing public ease-  
 ments or dedications being vacated by virtue  
 of K.S.A. 12-512(d).

Baughman Company, P.A.

\_\_\_\_\_  
 Mark A. Savoy, Surveyor

This plat of "BRISTOL PARK" an  
 Addition to Wichita, Kansas has been submitted to and  
 approved by the Wichita-Sedgewick County Metropolitan  
 Area Planning Commission,  
 Dated this \_\_\_\_\_ day of \_\_\_\_\_, 1989.  
 Wichita-Sedgewick County Metropolitan Area Planning Commission

\_\_\_\_\_  
 Sue L. Crockett, Chairman

\_\_\_\_\_  
 Marvin S. Knout, Secretary

This plat approved and all ded-  
 ications shown hereon accepted by the City Council  
 of the City of Wichita, Kansas, this \_\_\_\_\_ day of \_\_\_\_\_, 1989.

\_\_\_\_\_  
 Sheldon Kamen, Mayor

\_\_\_\_\_  
 John Meir, City Clerk

Entered on transfer record this  
 \_\_\_\_\_ day of \_\_\_\_\_, 1989.

\_\_\_\_\_  
 Don Wright, County Clerk

State of Kansas, ss This is to certify that this plat has  
 Sedgewick County, ss been filed for record in the office of the Register of  
 Deeds, this \_\_\_\_\_ day of \_\_\_\_\_, 1989 at \_\_\_\_\_ o'clock  
 \_\_\_\_\_ M., and is duly recorded.

\_\_\_\_\_  
 Pat Keller, Register of Deeds

\_\_\_\_\_  
 Ed Resa, Deputy

Proposed 6" SAN. DOWR

Proposed 8" & 4" WATER LINES

State of Kansas, ss. The foregoing instrument acknowl-  
 Sedgewick County, ss edged before me this \_\_\_\_\_ day of \_\_\_\_\_, 1989, by  
 J.W. Russell, President of J.W. Russell, Inc., on behalf  
 of the corporation.

J.W. Russell, Inc.

\_\_\_\_\_  
 J.W. Russell, President

My Appt. Exp. \_\_\_\_\_ Notary Public

SEWER & WATER LINES PLAN