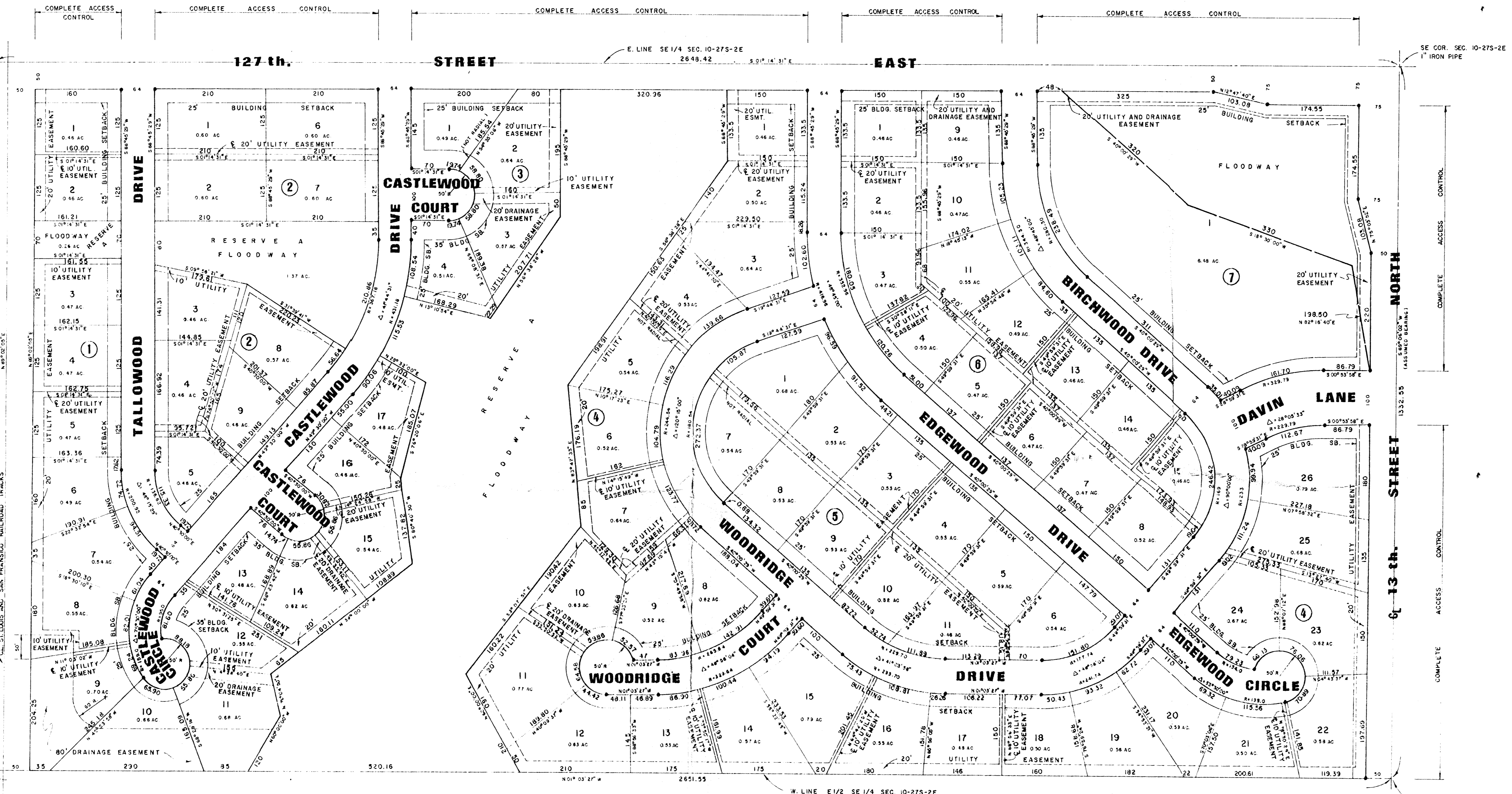


LOT	BLOCK	ELEVATIONS
2	1	1352
3	1	1352
8	1	1352
9	1	1352
10	1	1350
11	1	1349
12	1	1349
13	1	1348
14	1	1348
15	1	1348
16	1	1348
17	1	1348
2	2	1349
3	2	1349
7	2	1348
8	2	1348
3	3	1347
4	3	1347
1	4	1346
2	4	1346
3	4	1346
4	4	1347
5	4	1347
6	4	1348
7	4	1348
10	4	1348
11	4	1349
12	4	1349
1	7(N 260')	1343.0
1	7(EXC. N 260')	1345.0



NE COR. SE 1/4 OF SEC. 10-27S-2E

N.L. SE 1/4 SEC. 10-27S-2E

NW COR. E 1/2 SE 1/4 SEC. 10-27S-2E

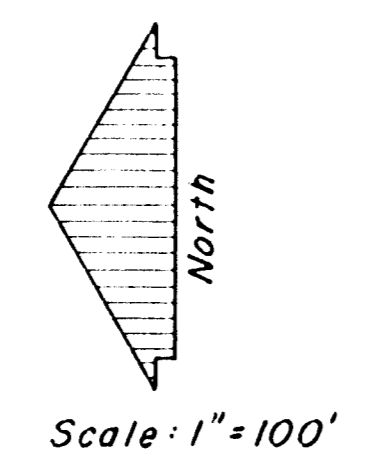
E. LINE SE 1/4 SEC. 10-27S-2E 2648.42

EAST

SE COR. SEC. 10-27S-2E 1" IRON PIPE

61st STREET NORTH

SW COR. E 1/2 SE 1/4 SEC. 10-27S-2E 1/2" IRON PIPE



**CRESTVIEW COUNTRY CLUB ESTATES  
BRIDGEWOOD ADDITION**

TO  
SEDGWICK COUNTY, KANSAS  
1980

Legend  
3/4" IRON PIPE

**REISS & GOODNESS ENGINEERS**