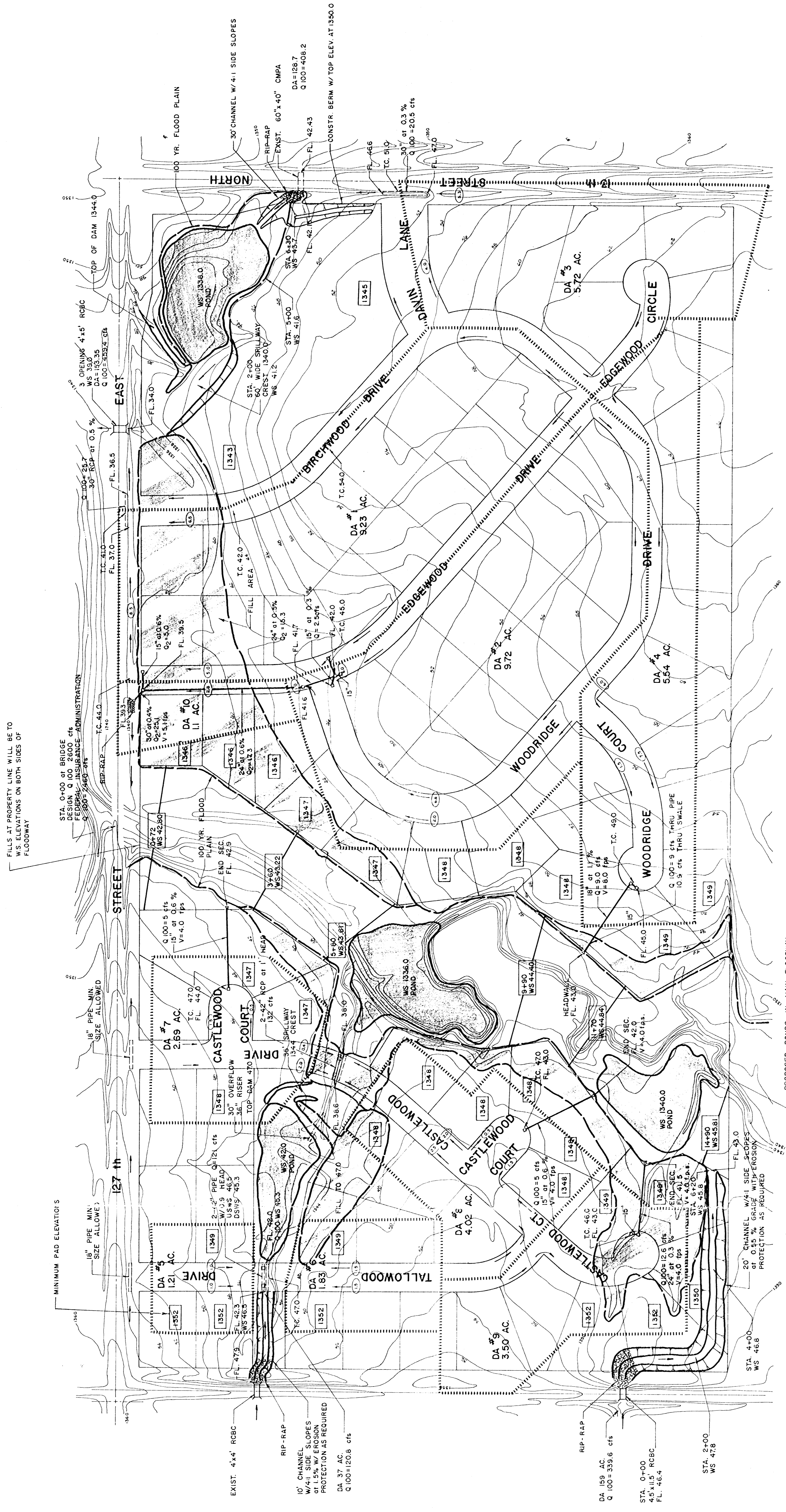


B.M. 1342.49  
R.R. SPIKE IN P.P. NW  
COR. 13TH & 127TH



FILLS AT PROPERTY LINE WILL BE TO  
WS ELEVATIONS ON BOTH SIDES OF  
FLOODWAY

MINIMUM PAD ELEVATIONS

18" PIPE MIN.  
SIZE ALLOWED

EXIST. 4.4' RCBC  
10' CHANNEL  
4.5' x 11.5' W/EROSION  
PROTECTION AS REQUIRED  
DA 37 AC  
Q 100=120.8 cfs

DA 159 AC  
Q 100=339.6 cfs  
RIP-RAP  
STA. 0+00  
4.5' x 11.5' RCBC  
FL. 46.4  
STA. 2+00  
WS 47.6

PROPOSED PONDS IN MAIN FLOODWAY  
WILL BE CONSTRUCTED ONLY IF A  
BORROW AREA FOR FILL IS REQUIRED

REVISED 12-17-79  
DRAINAGE PLAN

CRESTVIEW COUNTRY CLUB ESTATES  
BRIDGEWOOD ADDITION

NOV. 7, 1979

SCALE 1"=100'

NOTE  
ALL EXPOSED AREAS RESULTING FROM  
CONSTRUCTION WILL BE SEEDED AND MULCHED.

REISS & GOODNESS ENGINEERS  
2160 WEST 21<sup>ST</sup> AVENUE  
MICHIGAN, KANSAS 67204  
(316) 682-0222