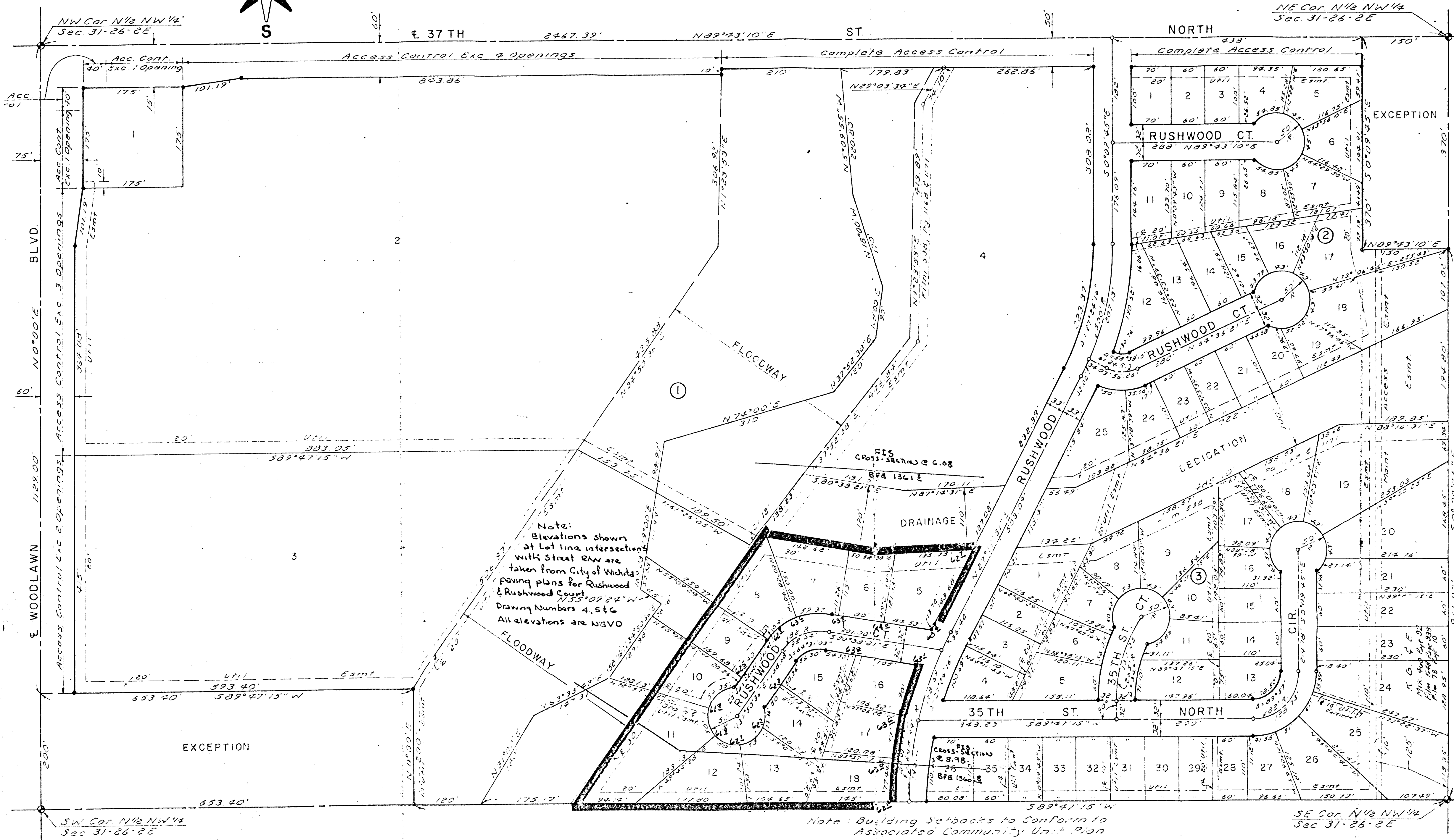
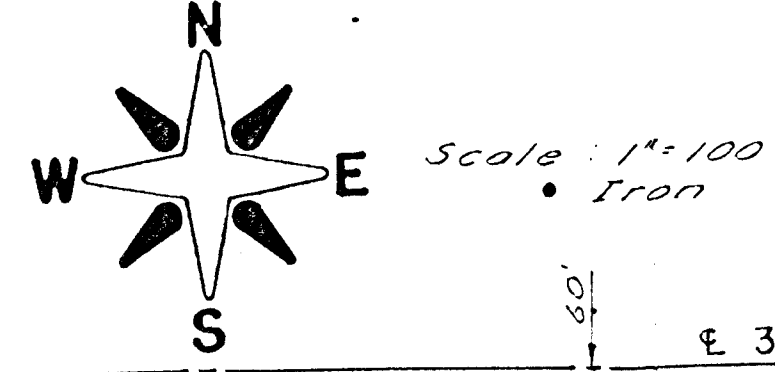


BRUSH CREEK ADDITION WICHITA, KANSAS



Note: Elevations shown at lot line intersections with Street R.W. are taken from City of Wichita paving plans for Rushwood & Rushwood Court, 11/15/09 24" W Drawing Numbers 4, 5 & 6. All elevations are NGVD.

Note: Building Setbacks to Conform to Associated Community Unit Plan

State of Kansas } SS We, Baughman Company, P.A., Surveyors in aforesaid county and State, do hereby certify that we have surveyed and plotted "BRUSH CREEK ADDITION", Wichita, Kansas, and that the accompanying plat is a true and correct exhibit of the property surveyed, described as the N1/4 of the NW1/4 of Section 31, T26S, R2E of the 6th P.M., Sedgwick County, Kansas, excepting the south 200 feet of the west 653.40 feet and the north 370 feet of the east 150 feet thereof.

Date Nov. 2, 1983 Baughman Company, P.A.
John E. Sundblad Surveyor

Know all men by these presents that we, the undersigned, have caused the land described in the survey to be divided into lots, blocks, streets and a drainage dedication to be known as "BRUSH CREEK ADDITION", Wichita, Kansas. The easements are hereby granted as indicated for the construction and maintenance of public utilities. The drainage dedication is hereby dedicated for drainage purposes. The streets are hereby dedicated to and for the use of the public. All egress rights of access to Woodlawn Blvd and 37th St North are hereby granted to the City of Wichita, Kansas, except, however, that Lot 1, B1K 1, shall have access to Woodlawn at one location over the south 135 feet thereof and to 37th St North over the east 135 feet thereof. Lot 2, B1K 1 shall have access to Woodlawn at three locations and to 37th St North at four locations and Lot 3, B1K 1 shall have access to Woodlawn at two locations, said locations to be determined by the City Engineer. The floodway shall be the responsibility of the owners of the property within said floodway until such time as the governing body exercising jurisdiction elects to assume the responsibility

For maintenance and improvement of the drainage, provided further that no building shall be constructed on or within said floodway, nor shall any fill, change of grade, creation of channel or other work be carried on without the permission of the Wichita-Sedgwick County Flood Control Office or their successors of Office. Building setbacks shall conform to the associated Community Unit Plan.

Brush Creek Community, a Joint Venture
Carl A. Steward Phillip M. Snodgrass William L. Korber
W.B. Carter Construction Co., Inc. Vice-Pres
State of Kansas } SS The foregoing instrument was acknowledged before me this 2nd day of November, 1983, by Carl A. Steward, III, Phillip M. Snodgrass, William L. Korber and Jack K. Stamp, Vice Pres of W.B. Carter Construction Co., Inc on behalf of the corporation.
John A. Miska Notary Public
My Commission Expires 12/24/84



This plat of "BRUSH CREEK ADDITION", Wichita, Kansas, has been submitted to and approved by the Wichita-Sedgwick County Metropolitan Area Planning Commission, Wichita, Kansas, dated this 16th day of July, 1983.

Wichita-Sedgwick County Metropolitan Area Planning Commission
Robert E. Crabb Chairman
Robert A. Crabb Secretary

This plat approved and all dedications shown hereon accepted by the Board of City Commissioners, Wichita, Kansas, this 3rd day of July, 1983.
Marjorie A. Wright Mayor
Robert A. Crabb City Clerk

This plat approved and all dedications shown hereon accepted by the Board of County Commissioners, Sedgwick County, Kansas, this 22nd day of July, 1983.
Jack Sprague Chairman
Donald E. Brown Commissioner
Tom Beatty Commissioner
Stanley White County Clerk

Entered on transfer record this 2nd day of July, 1983.
Stanley White County Clerk

State of Kansas } SS This is to certify that this plat has been filed for record in the Office of the Register of Deeds this 2nd day of July, 1983, at Wichita, Kansas and is duly recorded.
Robert E. Crabb Register of Deeds
Donna B. Crabb Deputy

We, the undersigned, holders of a mortgage on the above described property, do hereby consent to this plat of "BRUSH CREEK ADDITION".

State of Michigan } SS The foregoing instrument was acknowledged before me this 2nd day of July, 1983, by Robert E. Crabb and Judith Daines Crabb, his wife.
Robert E. Crabb Notary Public
My Commission Exp. 12/24/84
State of New Mexico } SS The foregoing instrument was acknowledged before me this 2nd day of July, 1983, by Leonard Rosigano and Donna B. Crabb Rosigano, his wife.
Robert E. Crabb Notary Public
My Commission Exp. 12/24/84

Exhibit