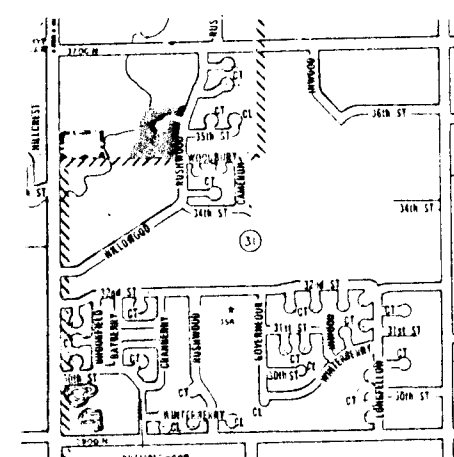


PRELIMINARY PLAT BRUSH CREEK 2ND ADDITION

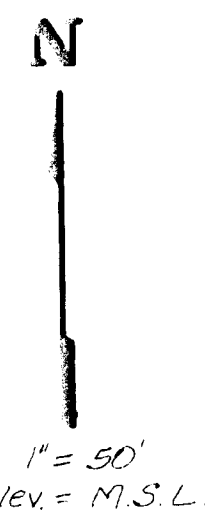
LOTS 5 THRU 18, BLOCK 1, BRUSH CREEK ADDITION

BRUSH CREEK COMMUNITY, a joint venture

J-112
J-113
L-112



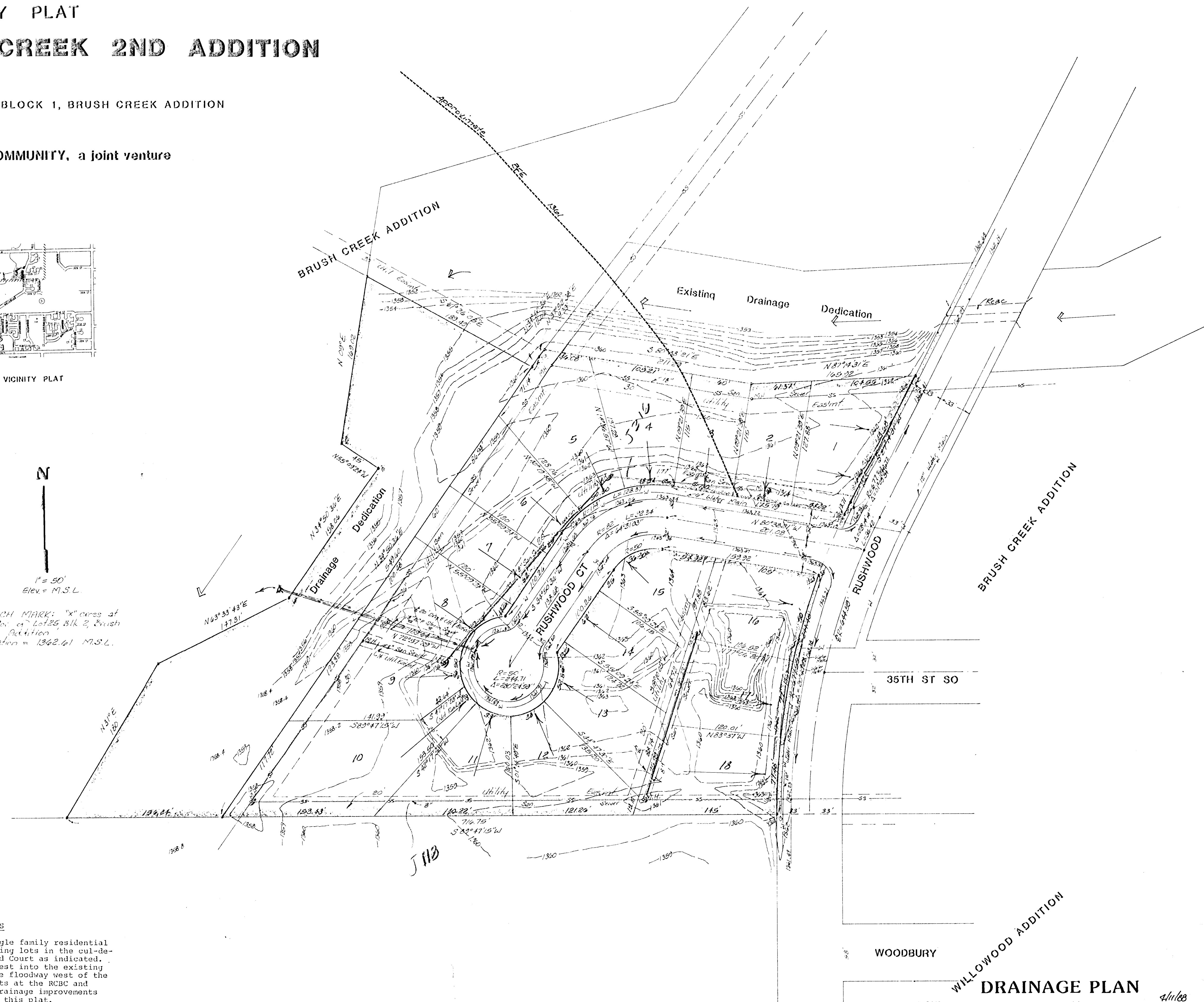
VICINITY PLAT



BENCH MARK: 'x' cross at S.W. Cor. of Lot 25, Blk 2, Brush Creek Addition
Elevation = 1362.61 M.S.L.

DRAINAGE NOTES

The proposed plat is for 18 single family residential lots and is a replat of larger existing lots in the cul-de-sac. The lots will drain to Rushwood Court as indicated. Rushwood Court is paved and drains west into the existing storm sewer which discharges into the floodway west of the plat. Rushwood drains north to inlets at the RCBC and south as indicated. No additional drainage improvements are necessary for the development of this plat.



WOODBURY

WILLOWOOD ADDITION

DRAINAGE PLAN
BAUGHMAN COMPANY, P.A.
SURVEYING & ENGINEERING
319-262-7271 • 315 ELLIS • WICHITA, KANSAS 67211
4/11/88
7 APR 88