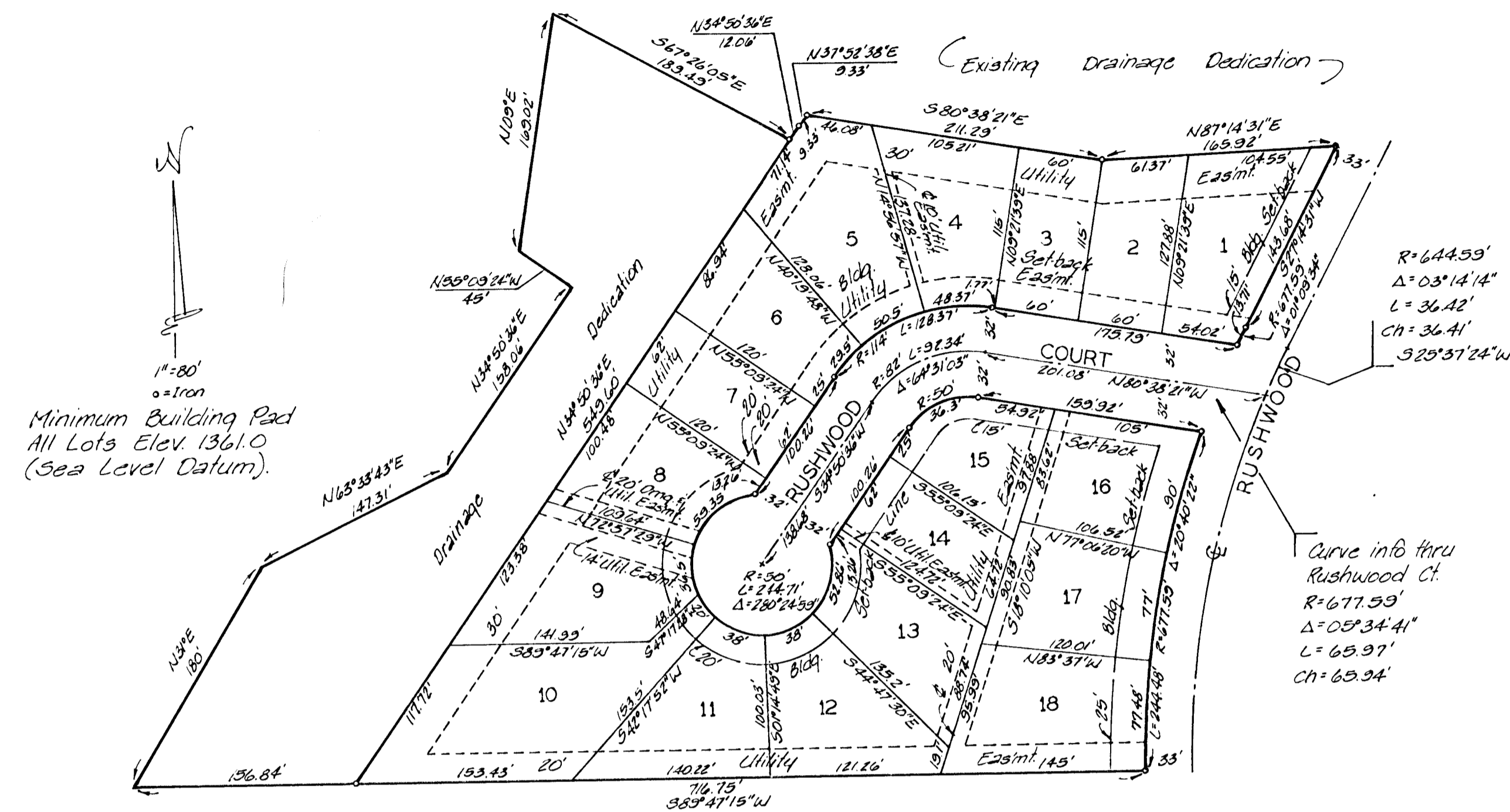


BRUSH CREEK 2ND ADDITION

WICHITA, KANSAS



State of Kansas }
 Sedgwick County } s.s. We, Baughman Company, P.A. Surveyors
 in aforesaid county and state do hereby certify that we have
 surveyed and platted "BRUSH CREEK 2ND ADDITION," Wichita,
 Kansas, and that the accompanying plat is a true and cor-
 rect exhibit of the property surveyed, described as and
 being a replat of Lots 5, 6, 7, 8, 9, 10, 11, 12, 13, 14, 15, 16, 17,
 and 18, Block 1, Brush Creek Addition, Wichita, Kansas, being
 situated in the NW1/4 of Sec. 31, Twp. 26-S, R-2-E of the 6th P.M.,
 Sedgwick County, Kansas. Easements and minimum building
 pad being vacated by virtue of K.S.A. 12-512(b).

Date _____

 Mark A. Saway
 Surveyor

Know all men by these presents that
 we, the undersigned, have caused the land described in
 the surveyors certificate to be platted into lots to be known
 as "BRUSH CREEK 2ND ADDITION," Wichita, Kansas. The
 utility easements are hereby granted as indicated for the
 construction and maintenance of all public utilities. The
 drainage and utility easement is hereby granted as indi-
 cated for the construction and maintenance of all public
 utilities and for drainage purposes. The drainage dedi-
 cation is hereby dedicated for drainage purposes. Minimum
 building pad shall be, Elev. 1361.0 (Sea Level Datum).

Brush Creek Community, a Joint Venture

 Earl A. Steward

 Phillip M. Snodgrass

 William L. Kerber
 W. B. Carter Construction Co., Inc.

 Jack K. Stamp
 Vice President

State of Kansas }
 Sedgwick County } s.s. The foregoing instrument acknowledged
 before me this _____ day of _____, 198____, by
 Earl A. Steward, Phillip M. Snodgrass, and William L. Kerber
 of Brush Creek Community, a joint venture, and Jack K. Stamp,
 Vice President, of W. B. Carter Construction Co., Inc., on behalf
 of the corporation.

My Appt Exp. _____

 Notary Public

This plat of "BRUSH CREEK 2ND
 ADDITION," Wichita, Kansas, has been submitted to and
 approved by the Wichita-Sedgwick County Metropolitan
 Area Planning Commission, Wichita, Kansas.
 Dated this _____ day of _____, 198____.
 Wichita-Sedgwick County Metropolitan Area Planning Commission
 _____ Chairman
 Ellen Parsons
 _____ Secretary
 Marvin S. Kreut

This plat approved and all dedications
 shown hereon accepted by the City Council of the City of
 Wichita, Kansas, this _____ day of _____, 198____.

_____ Mayor
 Sheldon Kamen
 _____ Deputy City Clerk
 Dale E. Rea
 Entered on transfer record this _____
 day of _____, 198____.
 _____ County Clerk
 Don Wright

State of Kansas }
 Sedgwick County } s.s. This is to certify that this plat has
 been filed for record in the office of the Register of
 Deeds this _____ day of _____, 198____, at
 _____ o'clock _____ M., and is duly recorded.

_____ Register of Deeds
 Pat Ketter
 _____ Deputy
 Ed Resa