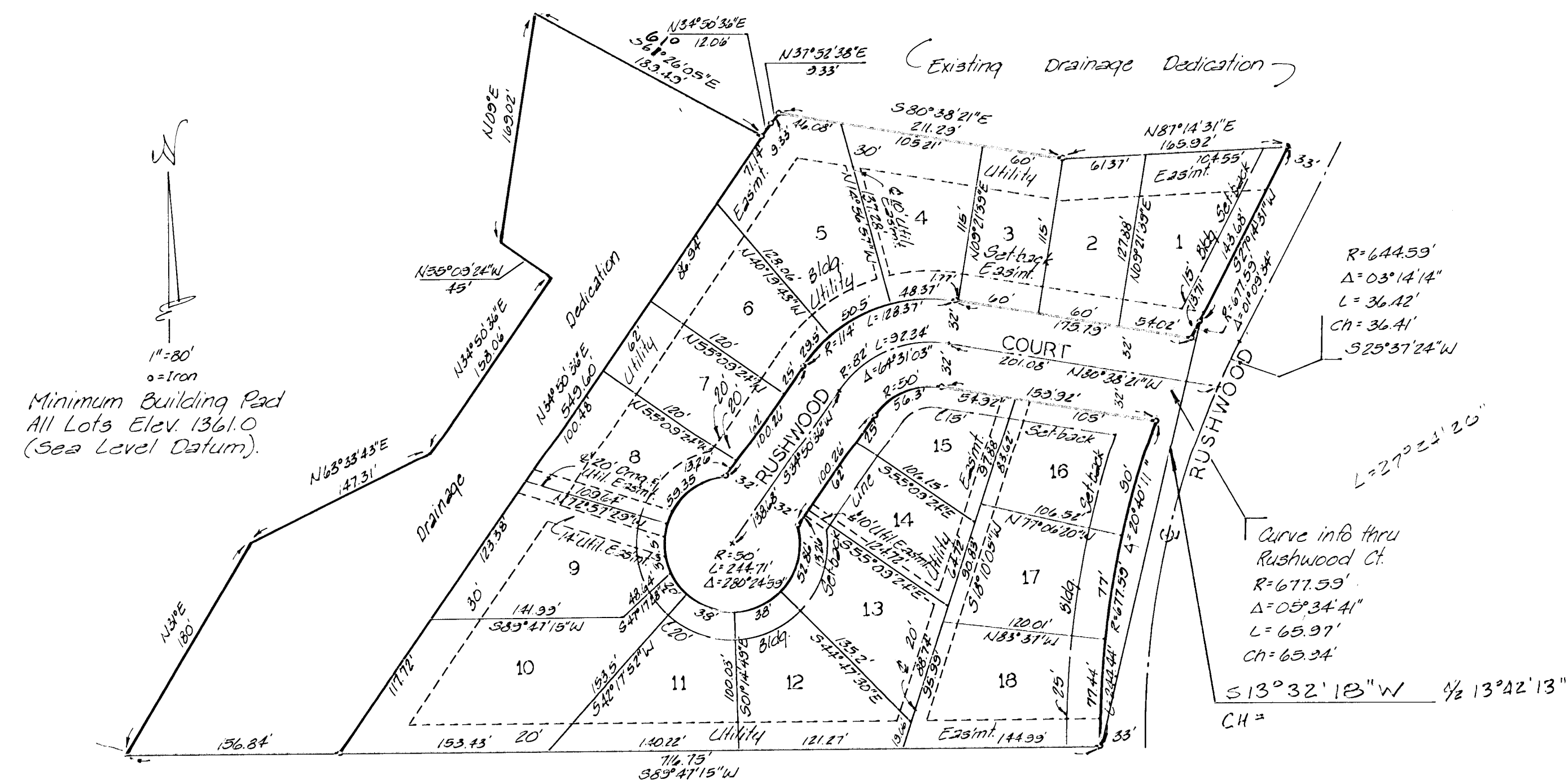


# BRUSH CREEK 2ND ADDITION

WICHITA, KANSAS



State of Kansas }  
 Sedgwick County } S.S. We, Baughman Company, P.A. Surveyors  
 in aforesaid county and state do hereby certify that we have  
 surveyed and platted "BRUSH CREEK 2ND ADDITION," Wichita,  
 Kansas, and that the accompanying plat is a true and cor-  
 rect exhibit of the property surveyed, described as and  
 being a replat of Lots 5, 6, 7, 8, 9, 10, 11, 12, 13, 14, 15, 16, 17,  
 and 18, Block 1, Brush Creek Addition, Wichita, Kansas, being  
 situated in the NW 1/4 of Sec. 31, Twp. 26-S, R-2-E of the 6th P.M.,  
 Sedgwick County, Kansas. Easements and minimum building  
 pad being vacated by virtue of K.S.A. 12-512(b).

21 July 1988  
 Date

Baughman Company, P.A.



Mark A. Sisk Surveyor

Know all men by these presents that  
 we, the undersigned, have caused the land described in  
 the surveyors certificate to be platted into lots to be known  
 as "BRUSH CREEK 2ND ADDITION," Wichita, Kansas. The  
 utility easements are hereby granted as indicated for the  
 construction and maintenance of all public utilities. The  
 drainage and utility easement is hereby granted as indi-  
 cated for the construction and maintenance of all public  
 utilities and for drainage purposes. The drainage dedi-  
 cation is hereby dedicated for drainage purposes. Minimum  
 building pad shall be, Elev. 1361.0 (Sea Level Datum).

Brush Creek Community, a Joint Venture

Earl A. Steward III  
Stanley J. Lawrence  
Douglas K. Blackman William L. Korber Gerald D. Haag

W. B. Carter Construction Co., Inc.

Jack K. Stamp Vice President

State of Kansas }  
 Sedgwick County } S.S. The foregoing instrument acknowledged  
 before me this 1st day of August, 1988, by  
 Earl A. Steward III, Stanley J. Lawrence, and William L. Korber  
 of Brush Creek Community, a joint venture, and Jack K. Stamp,  
 Vice President, of W. B. Carter Construction Co., Inc., on behalf  
 of the corporation.

Orinuel E. Young Notary Public

My Appt. Exp. 2-3-91

This plat of "BRUSH CREEK 2ND  
 ADDITION," Wichita, Kansas, has been submitted to and  
 approved by the Wichita-Sedgwick County Metropolitan  
 Area Planning Commission, Wichita, Kansas.  
 Dated this 26th day of July, 1988.

Wichita-Sedgwick County Metropolitan Area Planning Commission.  
 \_\_\_\_\_ Chairman  
 Elton Parsons  
 \_\_\_\_\_ Secretary  
 Martin S. Krout

This plat approved and all dedications  
 shown hereon accepted by the City Council of the City of  
 Wichita, Kansas, this 26th day of July, 1988.

\_\_\_\_\_ Mayor  
 Sheldon Kamen  
 \_\_\_\_\_ Deputy City Clerk  
 Dale E. Rea

Entered on transfer record this \_\_\_\_\_  
 day of \_\_\_\_\_, 1988.  
 \_\_\_\_\_ County Clerk  
 Don Wright

State of Kansas }  
 Sedgwick County } S.S. This is to certify that this plat has  
 been filed for record in the office of the Register of  
 Deeds this 26th day of July, 1988, at  
 \_\_\_\_\_ o'clock P.M., and is duly recorded.

\_\_\_\_\_ Register of Deeds  
 Pat Kattler  
 \_\_\_\_\_ Deputy  
 Ed Resa

State of Kansas }  
 Sedgwick County } S.S. The foregoing instrument acknowledged  
 before me this \_\_\_\_\_ day of \_\_\_\_\_, 1988, by  
 Douglas K. Blackman and Gerald D. Haag of Brush Creek Community,  
 a joint venture.

\_\_\_\_\_ Notary Public  
 My Appt. Exp. \_\_\_\_\_