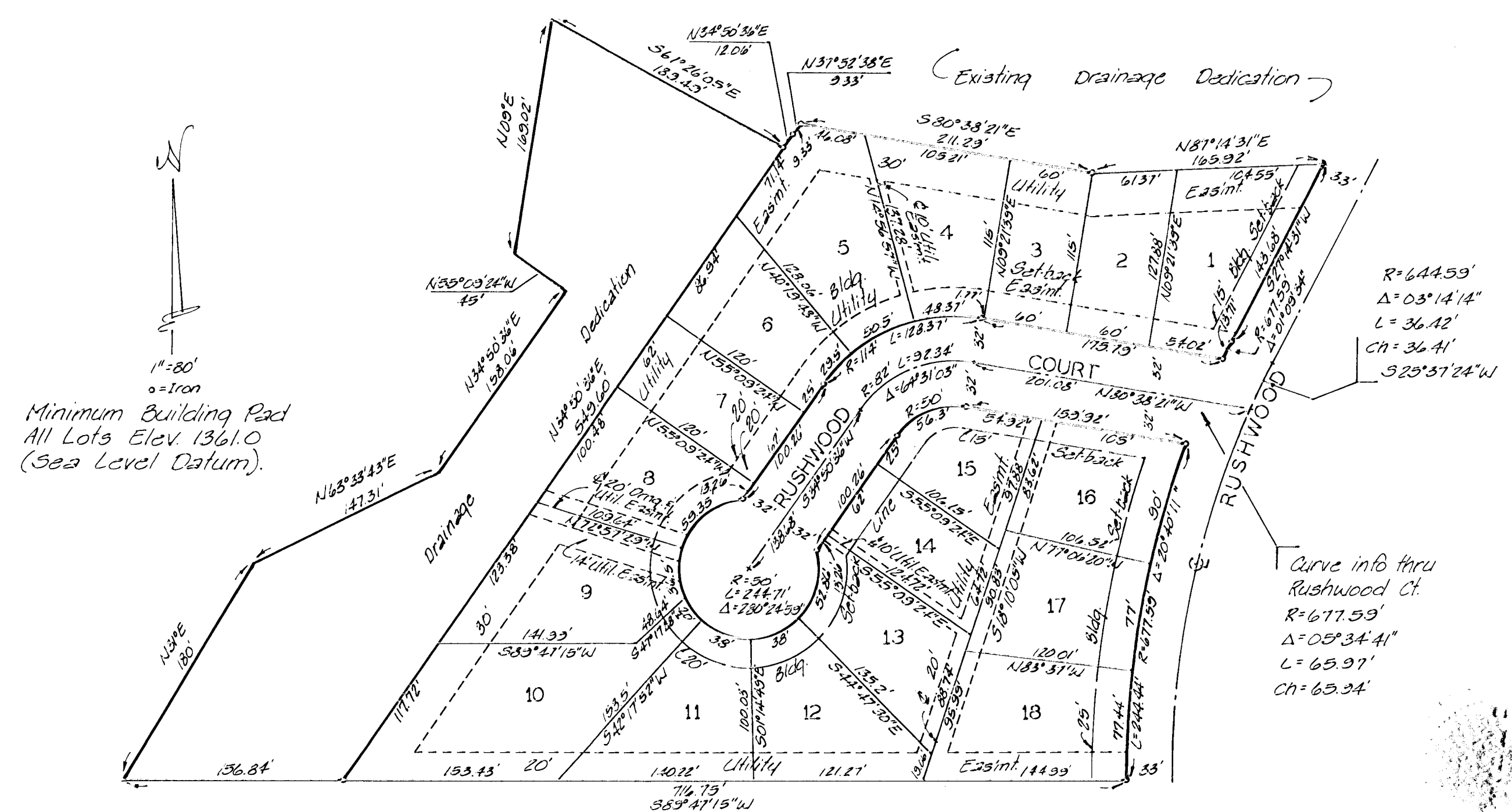


BRUSH CREEK 2ND ADDITION

WICHITA, KANSAS

Brush
Creek
2nd
Addition



State of Kansas }
Sedquick County } We, Bauchman Company, P.A. Surveyors
in aforesaid county and state do hereby certify that we have
surveyed and platted "BRUSH CREEK 2ND ADDITION," Wichita,
Kansas, and that the accompanying plat is a true and correct
exhibit of the property surveyed, described as and
being a replat of Lots 5, 6, 7, 8, 9, 10, 11, 12, 13, 14, 15, 16, 17
and 18, Block 1, Brush Creek Addition, Wichita, Kansas, being
situated in the NW 1/4 of Sec. 31, Twp. 26°S, R. 2°E of the 6th P.M.,
Sedquick County, Kansas. Easements and minimum building
pad being vacated by virtue of K.S.A. 12-512 (b).

This plat of "BRUSH CREEK 2ND
ADDITION," Wichita, Kansas, has been submitted to and
approved by the Wichita-Sedquick County Metropolitan
Area Planning Commission, Wichita, Kansas.
Dated this 26th day of May, 1982.
Wichita-Sedquick County Metropolitan Area Planning Commission

21 July 1982
Mark A. Saibey
Surveyor

Elton Parsons
Chairman
Marvin S. Kraut
Secretary

Know all men by these presents that
we, the undersigned, have caused the land described in
the surveyors certificate to be platted into lots to be known
as "BRUSH CREEK 2ND ADDITION," Wichita, Kansas. The
utility easements are hereby granted as indicated for the
construction and maintenance of all public utilities. The
drainage and utility easement is hereby granted as indicated
for the construction and maintenance of all public
utilities and for drainage purposes. The drainage dedi-
cation is hereby dedicated for drainage purposes. Minimum
building pad shall be, Elev 1361.0 (Sea Level Datum).

This plat approved and all dedications
shown hereon accepted by the City Council of the City of
Wichita, Kansas, this ___ day of ___ 198__.



Sheldon Kamen
Mayor
Dale E. Rea
Deputy City Clerk
Entered on transfer record this ___ day of ___ 198__.
Don Wright
County Clerk

Brush Creek Community, a Joint Venture
Earl A. Steward III
Stanley J. Lawrence
William L. Korber
Douglas K. Blackman
Gerald O. Haag
W. B. Carter Construction Co., Inc.
Jack K. Stamp
Vice President

State of Kansas }
Sedquick County } This is to certify that this plat has
been filed for record in the office of the Register of
Deeds this ___ day of ___ 198__, at
___ o'clock ___ M., and is duly recorded.

State of Kansas }
Sedquick County } The foregoing instrument acknowledged
before me this ___ day of ___ 198__, by
Earl A. Steward III, Stanley J. Lawrence, and William L. Korber
of Brush Creek Community, a joint venture, and Jack K. Stamp,
Vice President, of W. B. Carter Construction Co., Inc., on behalf
of the corporation.

Pat Kettler
Register of Deeds
Ed Resa
Deputy

My Appt. Exp. 2-3-71
Notary Public

State of Kansas }
Sedquick County } The foregoing instrument acknowledged
before me this ___ day of ___ 198__, by
Douglas K. Blackman and Gerald O. Haag of Brush Creek Community,
a joint venture
Notary Public
My Appt. Exp. ___