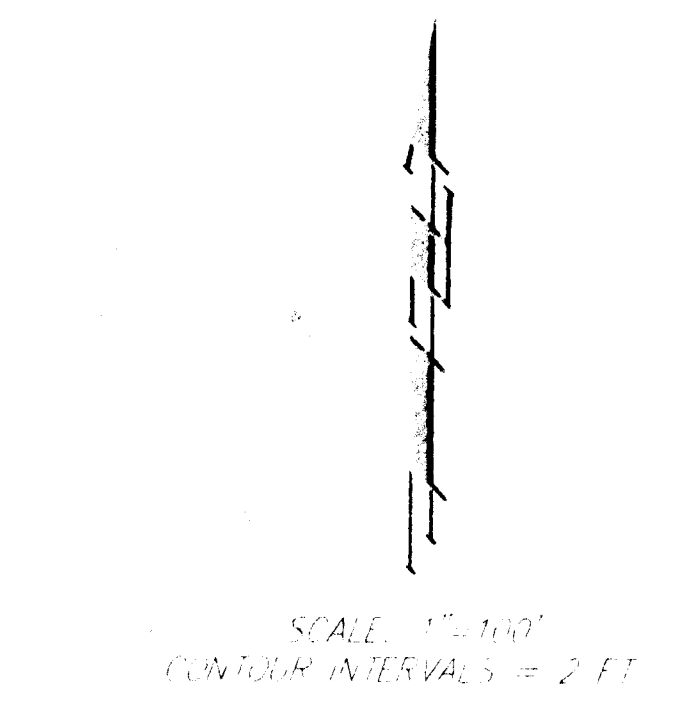
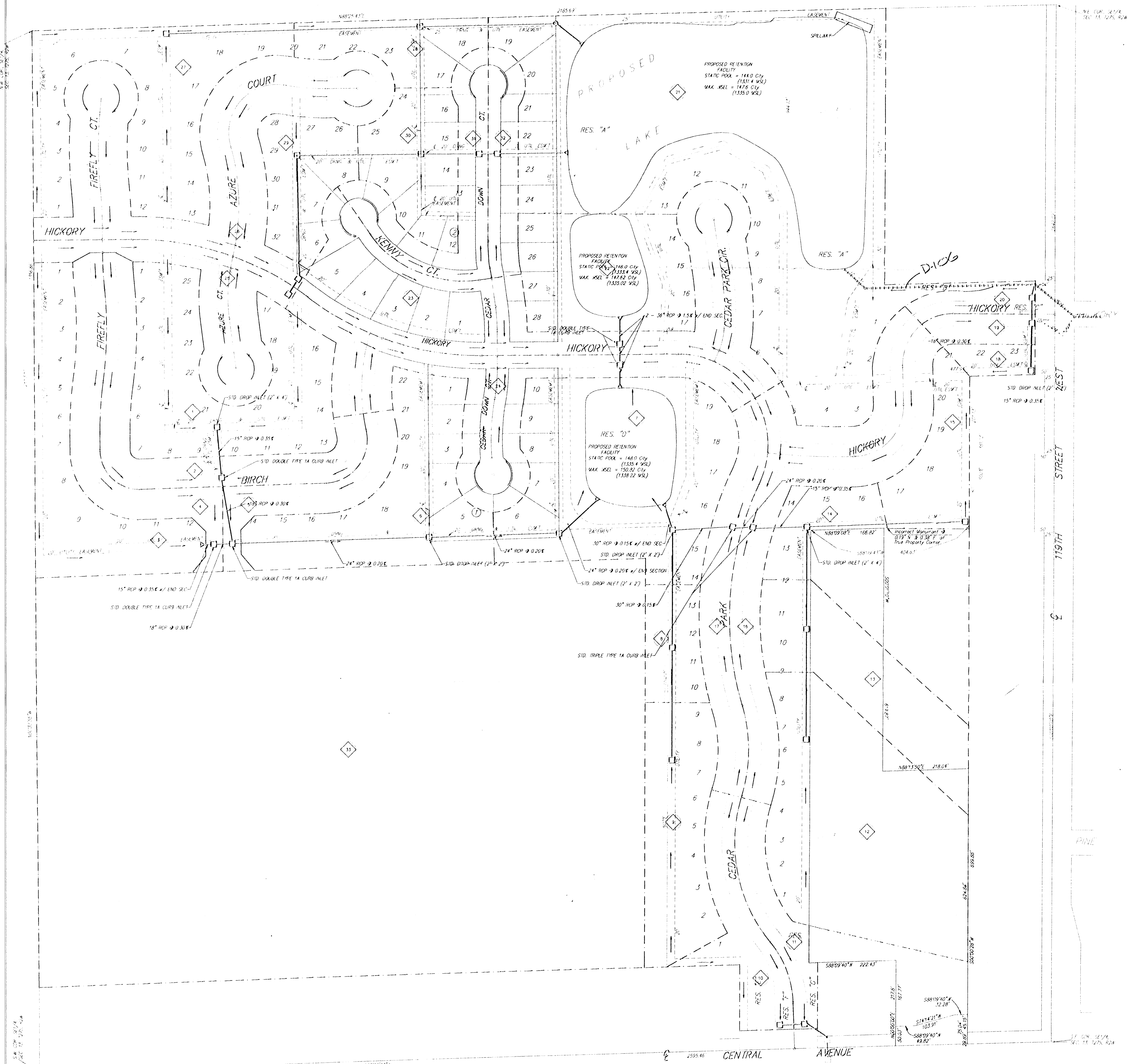


DRAINAGE CONCEPT
BUCKHEAD 2ND ADDITION
 WICHITA, SEDGWICK COUNTY, KANSAS



LEGAL DESCRIPTION
 A TRACT IN THE SEWER DISTRICT OF THE CITY OF WICHITA, KANSAS

PLANS
 ALL CITY PLANS
 ALL STATE PLANS
 ALL FEDERAL PLANS
 ALL COUNTY PLANS

FIELD MARK
 ALL FIELD MARKS
 ALL FIELD MARKS
 ALL FIELD MARKS

10 Drainage Basin Label
 --- Drainage Basin Boundary
 - - - Proposed SWS

DRAINAGE DATA

Basin No.	Area (ac.)	CN	Q ₁ (cfs)	Q ₁₀₀ (cfs)
1	5.46	75	4	17
2	2.20	90	5	12
3	5.01	75	3	14
4	1.81	90	4	10
5	1.18	90	2	7
6	5.56	75	4	16
7	5.21	90	12	54
8	1.01	75	1	5
9	2.62	75	3	12
10	1.54	90	3	9
11	1.07	90	2	6
12	6.15	90	12	25
13	2.79	75	3	13
14	3.91	75	4	18
15	1.42	75	1	6
16	5.40	90	8	22
17	1.49	90	3	8
18	0.37	75	0	2
19	0.47	90	1	3
20	0.48	90	1	3
21	14.88	90	31	85
22	1.00	90	6	17
23	5.14	90	11	29
24	3.59	90	7	19
25	1.99	90	4	11
26	4.96	90	10	24
27	4.05	75	4	18
28	1.53	75	1	6
29	1.60	75	2	7
30	1.81	75	2	8
31	1.73	90	4	10
32	1.04	90	2	6
33	57.21	90	50	134

NOTE: The proposed drainage plan provided herein is a generally defined plan to follow for design. It is recognized and assumed that upon the final design of street and storm sewer improvements within this plot that the designer will modify or alter the general drainage plan as necessary in order to implement the installation of the improvements to obtain the most economical design and construction possible.