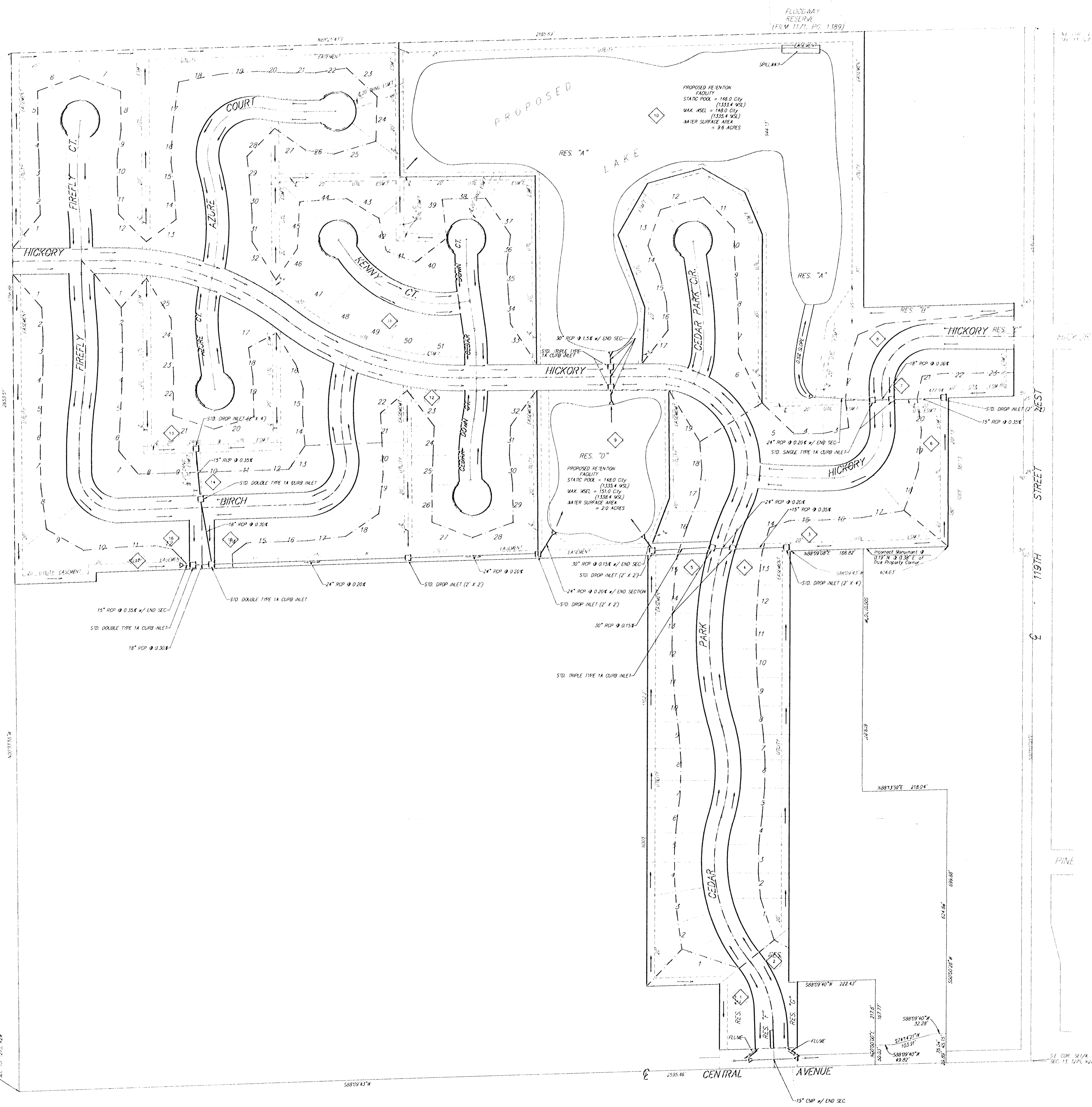


DRAINAGE PLAN  
**BUCKHEAD ADDITION**  
 WICHITA, SEDGWICK COUNTY, KANSAS

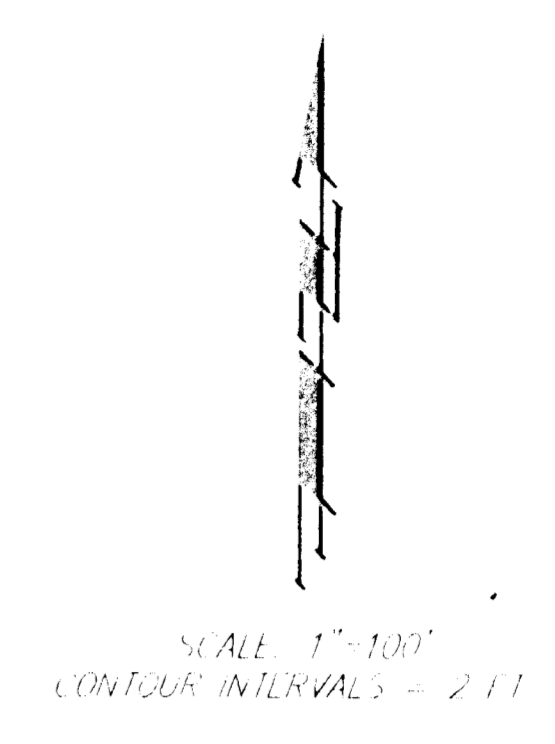


FLOODWAY  
 RESERVE  
 (FILM 1171, PG. 1389)

PROPOSED RETENTION  
 FACILITY  
 STATIC POOL = 148.0 CITY  
 (1333' + W.S.)  
 MAX. WSEL = 148.0 CITY  
 (1333' + W.S.)  
 WATER SURFACE AREA  
 = 28 ACRES

RES. "A"  
 LAKE

RES. "D"  
 PROPOSED RETENTION  
 FACILITY  
 STATIC POOL = 148.0 CITY  
 (1333' + W.S.)  
 MAX. WSEL = 151.0 CITY  
 (1338' + W.S.)  
 WATER SURFACE AREA  
 = 2.0 ACRES



AREA OF SURVEY  
 AS SHOWN BY THE LEGAL DESCRIPTION OF THE SURVEY IS 2.0 ACRES

OWNER  
 RELIANT INVESTMENTS  
 ATTN: PAUL F. KELLEY  
 13155 W. 11<sup>TH</sup> ST. NO. 108  
 MULLEN, KANSAS 66112  
 PH: 316-722-8200

BENCHMARK  
 119TH ST. & CENTRAL CITY DIST. 45 E. & 46 S.  
 1171' ROP ELEV. = 156.21' (1171) DATUM  
 11844.11 W.S.

- ◆ Drainage Basin Label
- Drainage Basin Boundary
- Proposed SWS

**DRAINAGE DATA**

| Basin No. | Area (ac.) | "C" | Q <sub>2</sub> (cfs) | Q <sub>100</sub> (cfs) |
|-----------|------------|-----|----------------------|------------------------|
| 1         | 0.88       | 0.4 | 1.4                  | 5.2                    |
| 2         | 0.44       | 0.4 | 0.7                  | 1.6                    |
| 3         | 2.45       | 0.4 | 3.8                  | 9.0                    |
| 4         | 5.43       | 0.4 | 8.4                  | 20.2                   |
| 5         | 3.44       | 0.4 | 5.3                  | 12.7                   |
| 6         | 0.39       | 0.4 | 1.5                  | 3.6                    |
| 7         | 0.81       | 0.4 | 1.2                  | 3.0                    |
| 8         | 0.78       | 0.4 | 1.2                  | 2.9                    |
| 9         | 8.50       | 0.6 | 19.5                 | 47.0                   |
| 10        | 25.45      | 0.6 | 58.5                 | 140.7                  |
| 11        | 13.86      | 0.4 | 21.2                 | 51.1                   |
| 12        | 5.73       | 0.4 | 8.8                  | 21.1                   |
| 13        | 2.83       | 0.4 | 4.3                  | 10.4                   |
| 14        | 3.05       | 0.4 | 4.7                  | 11.2                   |
| 15        | 1.40       | 0.4 | 2.1                  | 5.1                    |
| 16        | 2.60       | 0.4 | 4.0                  | 9.6                    |
| 17        | 1.87       | 0.4 | 2.9                  | 6.9                    |

NOTE: The proposed drainage plan provided herein is a generally accepted plan to follow for design. It is recognized and assumed that upon the final design of street and storm sewer improvements within this plat that the designer will modify or alter the general drainage plan as necessary in order to implement the installation of the improvements to obtain the most economical design and construction possible.