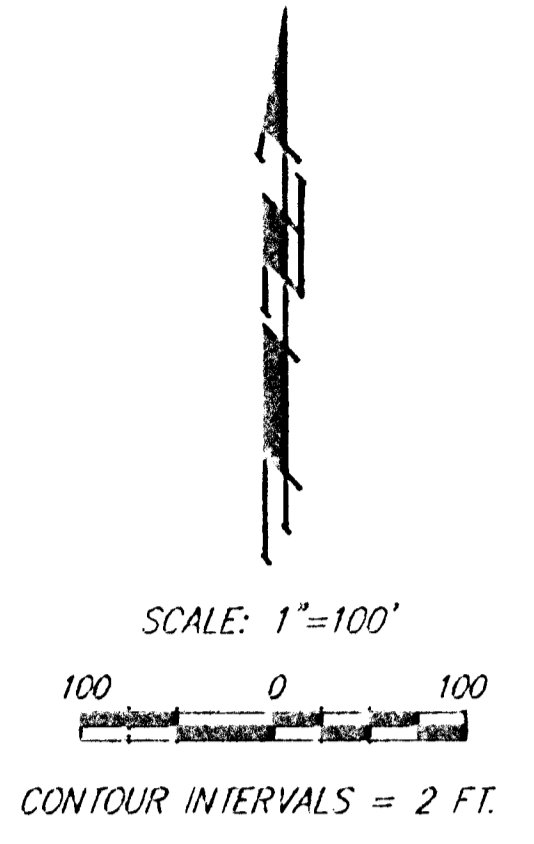
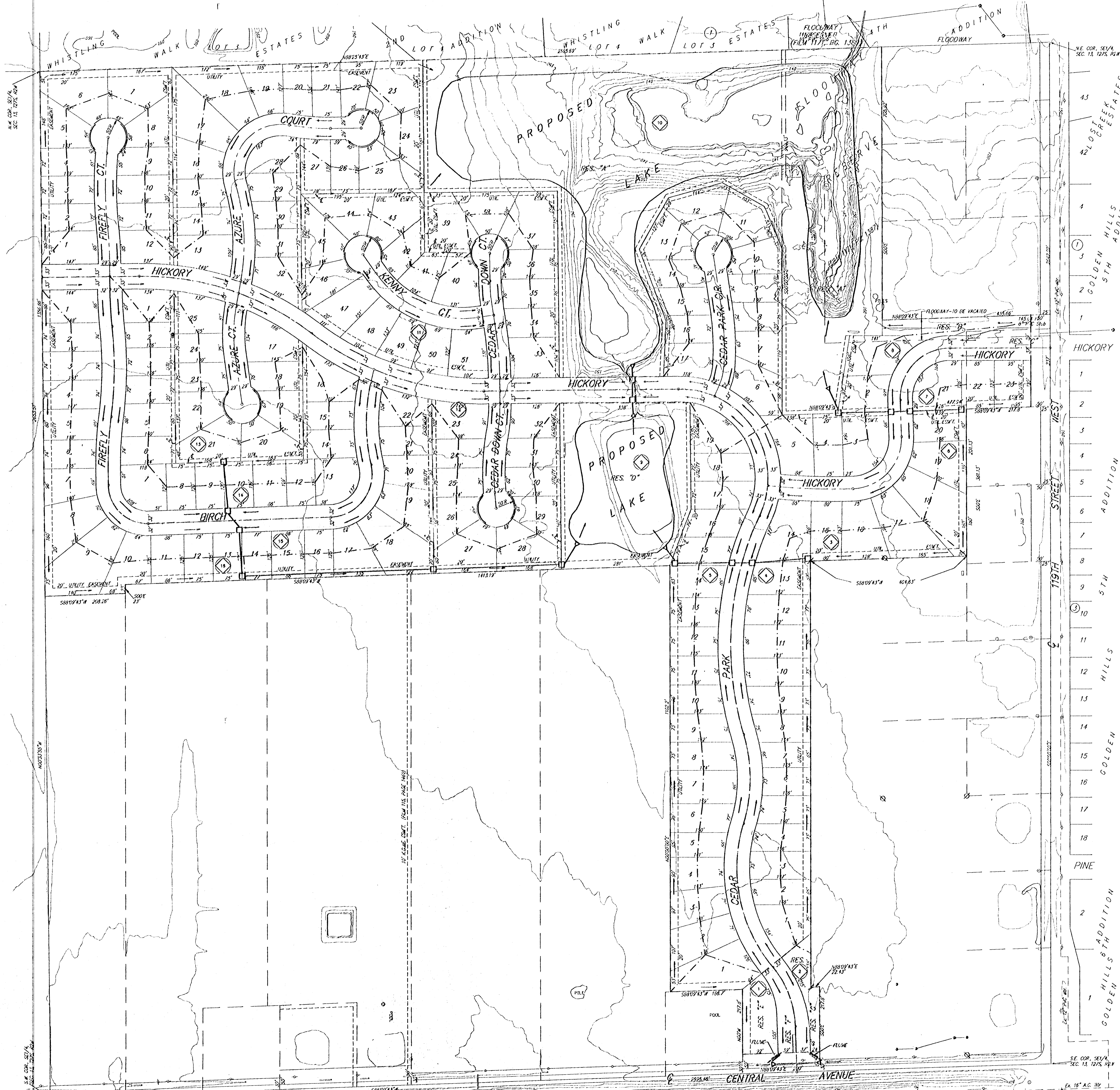


DRAINAGE CONCEPT
BUCKHEAD ADDITION
 WICHITA, SEDGWICK COUNTY, KANSAS

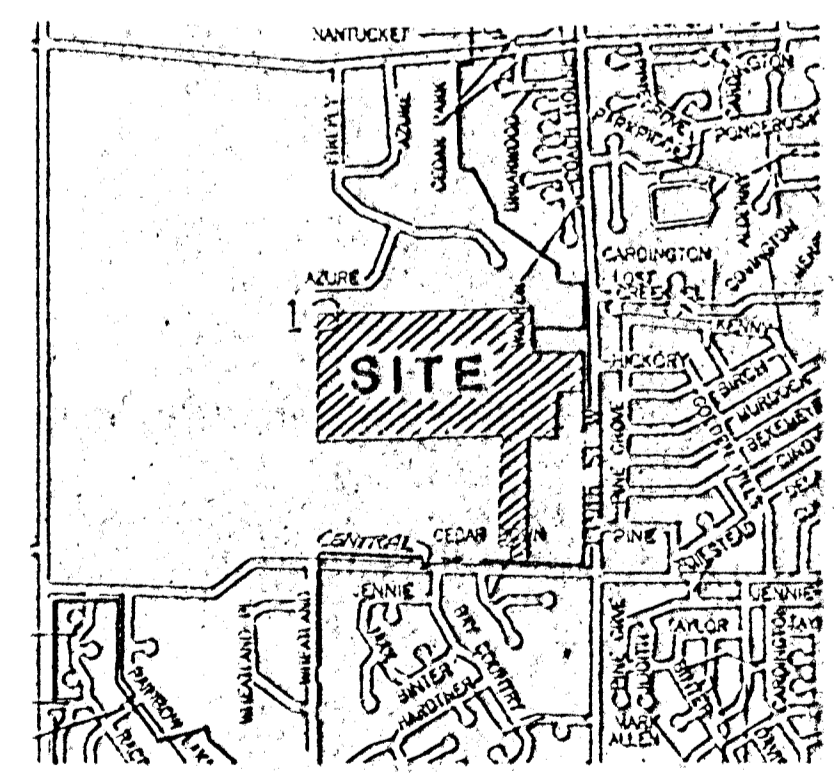


CONTOUR INTERVALS = 2 FT.
 LEGAL DESCRIPTION:
 A TRACT IN THE SE 1/4 OF SEC. 13, TAP. 27-S, R-2-W
 OWNER:
 KELSEY INVESTMENTS
 ATTN: PAUL E. KELSEY
 11515 14TH ST. NO. 602
 MOBILE, KANSAS 66212
 PH: 316-129-9218
 BENCHMARK:
 1197H ST. # & CENTRAL CITY DOC. 40' E & 16' S
 OF C 307H. ELEV = 156.31 CITY DATUM
 (1514.33 U.S.L.)

- Drainage Basin Label
- Drainage Basin Boundary
- Proposed SWS

DRAINAGE DATA

Basin No.	Area (ac.)	"C"	Q ₂ (cfs)	Q ₁₀₀ (cfs)
1	0.88	0.4	1.4	3.2
2	0.44	0.4	0.7	1.6
3	2.45	0.4	3.8	9.0
4	5.48	0.4	8.4	20.2
5	3.44	0.4	5.3	12.7
6	0.99	0.4	1.5	3.6
7	0.81	0.4	1.2	3.0
8	0.78	0.4	1.2	2.9
9	8.50	0.6	19.5	47.0
10	25.45	0.6	58.5	140.7
11	13.86	0.4	21.2	51.1
12	5.47	0.4	8.4	20.2
13	2.83	0.4	4.3	10.4
14	3.05	0.4	4.7	11.2
15	4.12	0.4	6.3	15.2
16	2.01	0.4	3.1	7.4



VICINITY MAP