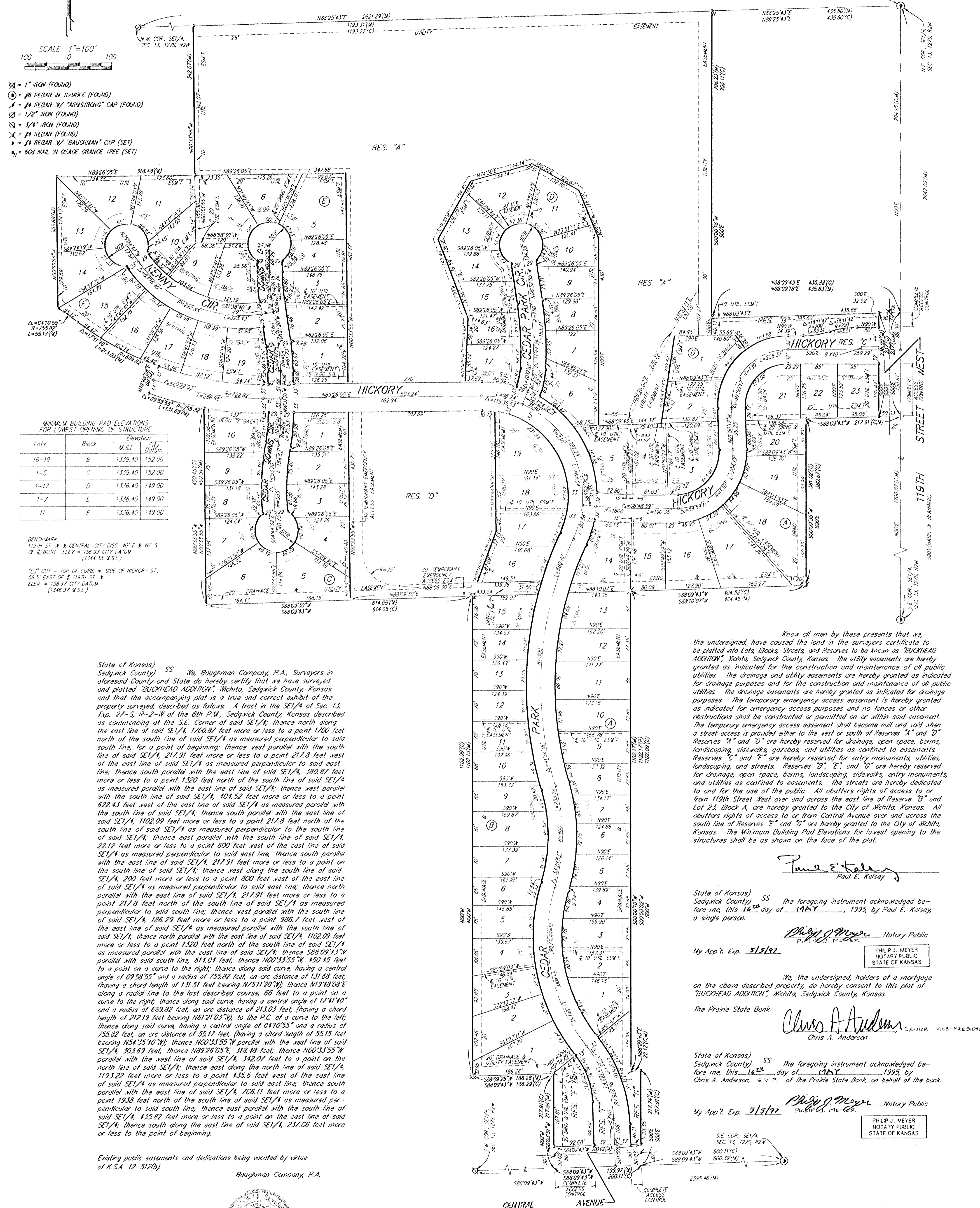


# BUCKHEAD ADDITION

WICHITA, SEDGWICK COUNTY, KANSAS



SCALE: 1"=100'

○ = 1" IRON (FOUND)  
 ⊙ = #8 REBAR IN TUMBLE (FOUND)  
 ⊕ = #4 REBAR W/ "AMSTRONG" CAP (FOUND)  
 ⊘ = 1/2" IRON (FOUND)  
 ⊙ = 3/4" IRON (FOUND)  
 ⊙ = #4 REBAR (FOUND)  
 ⊙ = #4 REBAR W/ "BAUGHMAN" CAP (SET)  
 ⊙ = 600 NAIL IN OSAGE ORANGE TREE (SET)

MINIMUM BUILDING PAD ELEVATIONS FOR LOWEST OPENING OF STRUCTURE

Lots	Block	M.S.L.	Elevation
16-19	B	1539.40	152.00
1-5	C	1539.40	152.00
1-17	D	1536.40	149.00
1-7	E	1536.40	149.00
11	E	1536.40	149.00

BENCHMARK  
 119TH ST. W. & CENTRAL CITY DISC. 40' E. & 46' S.  
 OF C. 8074. 4227' = 156.91 CITY DATUM  
 (1344.31 M.S.L.)

"T" CUT - TOP OF CURB, N. SIDE OF HICKORY ST.  
 56.5' EAST OF E. 119TH ST. W.  
 ELEV. = 158.37 CITY DATUM  
 (1346.37 M.S.L.)

State of Kansas) SS We, Baughman Company, P.A., Surveyors in Sedgewick County and State do hereby certify that we have surveyed and plotted BUCKHEAD ADDITION, Wichita, Sedgewick County, Kansas and that the accompanying plat is a true and correct exhibit of the property surveyed, described as follows: A tract in the SE 1/4 of Sec. 13, Twp. 27-S, R-2-W of the 6th P.M., Sedgewick County, Kansas described as commencing at the SE corner of said SE 1/4, thence north along the east line of said SE 1/4, 1702.87 feet more or less to a point 1702 feet north of the south line of said SE 1/4 as measured perpendicular to said south line, for a point of beginning; thence west parallel with the south line of said SE 1/4, 217.31 feet more or less to a point 217.3 feet west of the east line of said SE 1/4 as measured perpendicular to said east line; thence south parallel with the east line of said SE 1/4, 382.87 feet more or less to a point 1320 feet north of the south line of said SE 1/4 as measured parallel with the east line of said SE 1/4; thence west parallel with the south line of said SE 1/4, 401.52 feet more or less to a point 822.43 feet west of the east line of said SE 1/4 as measured parallel with the south line of said SE 1/4; thence south parallel with the east line of said SE 1/4, 1102.09 feet more or less to a point 217.3 feet north of the south line of said SE 1/4 as measured perpendicular to the south line of said SE 1/4; thence east parallel with the south line of said SE 1/4, 22.12 feet more or less to a point 800 feet west of the east line of said SE 1/4 as measured perpendicular to said east line; thence south parallel with the east line of said SE 1/4, 121.91 feet more or less to a point 217.3 feet north of the south line of said SE 1/4 as measured perpendicular to said south line; thence west parallel with the south line of said SE 1/4, 200 feet more or less to a point 800 feet west of the east line of said SE 1/4 as measured perpendicular to said east line; thence north parallel with the south line of said SE 1/4, 217.31 feet more or less to a point 217.3 feet north of the south line of said SE 1/4 as measured perpendicular to said south line; thence west parallel with the south line of said SE 1/4, 126.29 feet more or less to a point 326.7 feet west of the east line of said SE 1/4 as measured parallel with the south line of said SE 1/4; thence north parallel with the east line of said SE 1/4, 1102.09 feet more or less to a point 1320 feet north of the south line of said SE 1/4 as measured parallel with the east line of said SE 1/4; thence 589°43'W parallel with said south line, 614.01 feet; thence N00°33'55"W, 450.45 feet to a point on a curve to the right, thence along said curve, having a central angle of 09°58'35" and a radius of 158.32 feet, an arc distance of 131.68 feet, (having a chord length of 131.51 feet bearing N45°11'20"W); thence N13°48'08"E along a radial line to the last described course, 66 feet to a point on a curve to the right, thence along said curve, having a central angle of 17°11'40" and a radius of 630.32 feet, an arc distance of 213.03 feet, (having a chord length of 212.19 feet bearing N81°01'31"W), to the P.C. of a curve to the left, thence along said curve, having a central angle of 04°10'55" and a radius of 755.82 feet, an arc distance of 53.17 feet, (having a chord length of 53.15 feet bearing N54°35'40"W); thence N00°33'55"W parallel with the west line of said SE 1/4, 303.63 feet; thence N89°28'05"E, 313.48 feet; thence N00°33'55"W parallel with the west line of said SE 1/4, 482.07 feet to a point on the north line of said SE 1/4; thence east along the north line of said SE 1/4, 1193.22 feet more or less to a point 835.6 feet west of the east line of said SE 1/4 as measured perpendicular to said east line; thence south parallel with the east line of said SE 1/4, 126.11 feet more or less to a point 1038 feet north of the south line of said SE 1/4 as measured perpendicular to said south line; thence east parallel with the south line of said SE 1/4, 835.82 feet more or less to a point on the east line of said SE 1/4; thence south along the east line of said SE 1/4, 237.06 feet more or less to the point of beginning.

Existing public easements and dedications being recited by virtue of K.S.A. 12-512(b).

Baughman Company, P.A.  
 Gregory F. Stevens, Surveyor  
 5-16-95

This plat of BUCKHEAD ADDITION, Wichita, Sedgewick County, Kansas has been submitted to and approved by the Wichita-Sedgewick County Metropolitan Area Planning Commission, Wichita, Kansas, dated this 27th day of April, 1995, by the Wichita-Sedgewick County Metropolitan Area Planning Commission

John W. McKay, Jr., Chairman  
 Marvin S. Arcot, Secretary

This plat approved and all dedications shown hereon accepted by the City Council of the City of Wichita, Kansas, this \_\_\_ day of \_\_\_, 1995.

Bob Knight, Mayor  
 Pat Burnett, City Clerk

Know all men by these presents that we, the undersigned, have caused the land in the surveyors certificate to be platted into Lots, Blocks, Streets, and Reserves to be known as BUCKHEAD ADDITION, Wichita, Sedgewick County, Kansas. The utility easements are hereby granted as indicated for the construction and maintenance of all public utilities. The drainage and utility easements are hereby granted as indicated for drainage purposes and for the construction and maintenance of all public utilities. The drainage easements are hereby granted as indicated for drainage purposes. The temporary emergency access easement is hereby granted as indicated for emergency access purposes and no fences or other obstructions shall be constructed or permitted on or within said easement. The temporary emergency access easement shall become null and void when a street access is provided either to the west or south of Reserves "A" and "D". Reserves "A" and "D" are hereby reserved for drainage, open space, berms, landscaping, sidewalks, gutters and utilities as confined to easements. Reserves "C" and "E" are hereby reserved for entry monuments, utilities, landscaping and streets. Reserves "B", "F", "G" and "H" are hereby reserved for drainage, open space, berms, landscaping, sidewalks, entry monuments, and utilities as confined to easements. The streets are hereby dedicated to and for the use of the public. All egress rights of access to or from 119th Street West over and across the east line of Reserve "D" and Lot 23, Block A, are hereby granted to the City of Wichita, Kansas. All egress rights of access to or from Central Avenue over and across the south line of Reserves "E" and "G" are hereby granted to the City of Wichita, Kansas. The Minimum Building Pad Elevations for lowest opening to the structures shall be as shown on the face of the plat.

Paul E. Kelsey, Notary Public  
 My App't. Exp. 5/15/97

State of Kansas) SS The foregoing instrument acknowledged before me, this 16th day of MAY, 1995, by Paul E. Kelsey, a single person.

Chris A. Anderson, Notary Public  
 My App't. Exp. 5/15/97

Chris A. Anderson, Notary Public  
 My App't. Exp. 5/15/97

Chris A. Anderson, Notary Public  
 My App't. Exp. 5/15/97

State of Kansas) SS The foregoing instrument acknowledged before me, this 16th day of MAY, 1995, by Chris A. Anderson, S.V.P. of the Prairie State Bank, on behalf of the bank.

Chris A. Anderson, Notary Public  
 My App't. Exp. 5/15/97

Entered on transfer record this \_\_\_ day of \_\_\_, 1995.

Susan E. Crockett-Spoon, County Clerk

State of Kansas) SS This is to certify that this plat has been filed for record in the office of the Register of Deeds, this \_\_\_ day of \_\_\_, 1995, at \_\_\_ o'clock \_\_\_ M., and is duly recorded.

Put Kattler, Register of Deeds  
 Ed Reso, Deputy