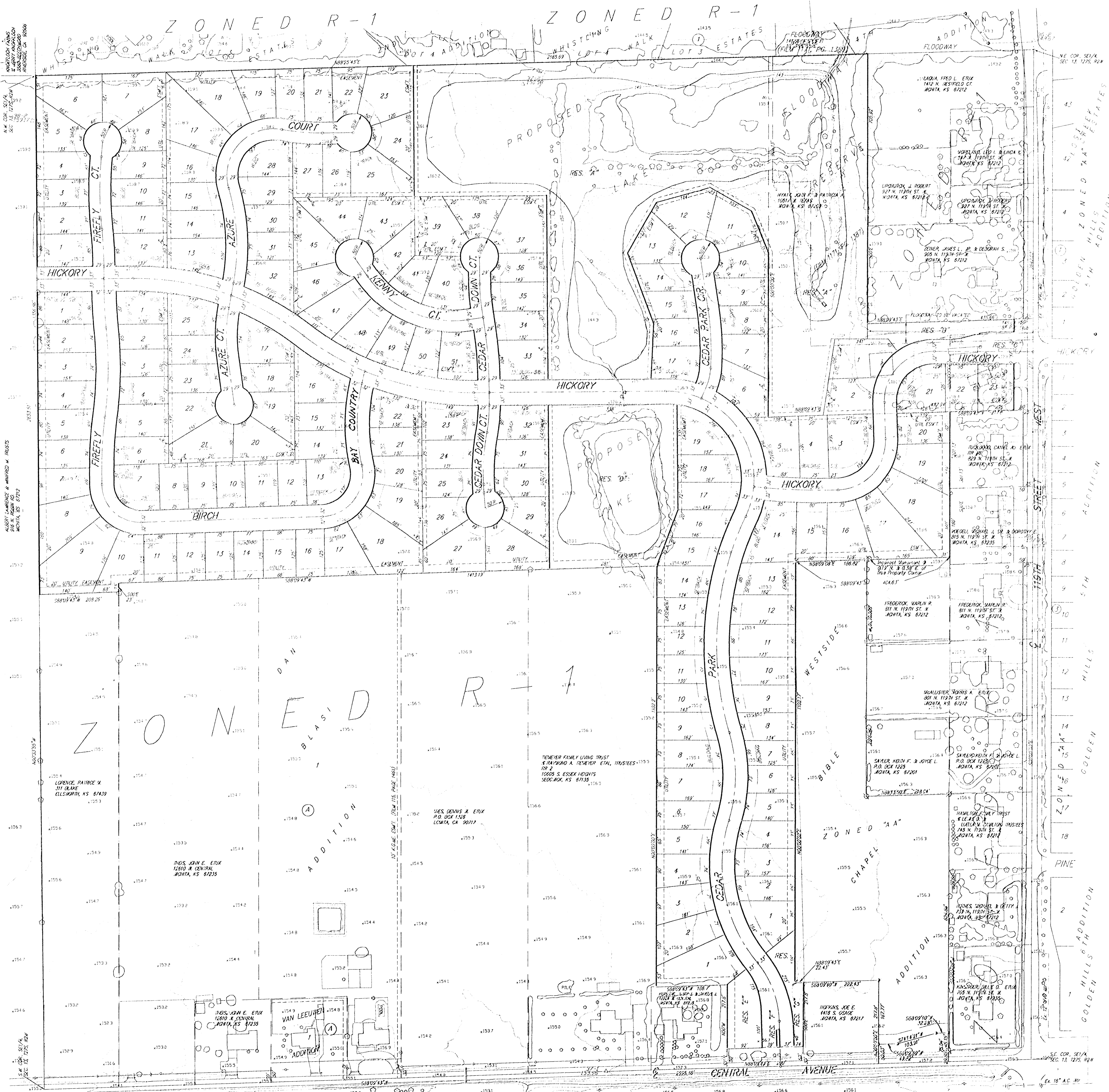


PRELIMINARY PLAT
BUCKHEAD ADDITION
 WICHITA, SEDGWICK COUNTY, KANSAS

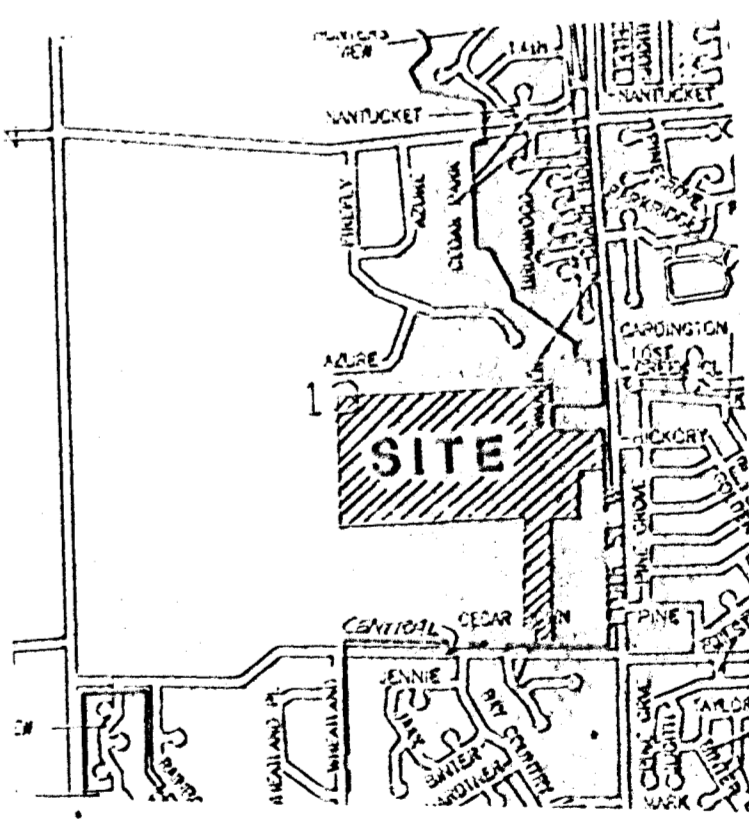


- SCALE: 1"=100'
- CONTOUR INTERVALS = 2 FT
- Ø = 1/2" IRON PIPE OVER STONE (FOUND)
 - Ø = 3/4" IRON PIPE OVER STONE (FOUND)
 - Ø = IRON PIPE (FOUND)
 - Ø = 4" Ø CONC. MAN. - #4 REBAR IN CIR. (FOUND)
 - Ø = 1" SQUARE IRON BAR IN ASPHALT ROAD (FOUND)
 - Ø = #4 ARMSTRONG REBAR (FOUND)
 - Ø = #4 WACOY COMPANY REBAR (FOUND)
 - Ø = #4 BAUGHMAN REBAR (FOUND)
 - Ø = 1/2" IRON PIPE (FOUND)
 - Ø = 3/4" IRON PIPE (FOUND)
 - Ø = PK NAIL & SHANK (SET)
 - Ø = #4 BAUGHMAN REBAR (SET)
- (D) = DESCRIBED / DEEDED
 (M) = MEASURED

LEGAL DESCRIPTION
 A TRACT IN THE SE 1/4 OF SEC. 13, TAP 27-S, R-2-W

CURVED INVESTMENTS
 417N. PAUL F. KELLEY
 1555 N. 14TH ST. #300
 WICHITA, KANSAS 67212
 PH: 76-223-8228

BENCHMARK
 119TH ST. N. & CENTRAL CITY ELEV. 40'E & 46'S
 14' C. 5074' ELEV. = 1562.21' DATUM
 (1244.31' M.S.L.)



VICINITY MAP

No. STORM SEWER / SANITARY SEWER