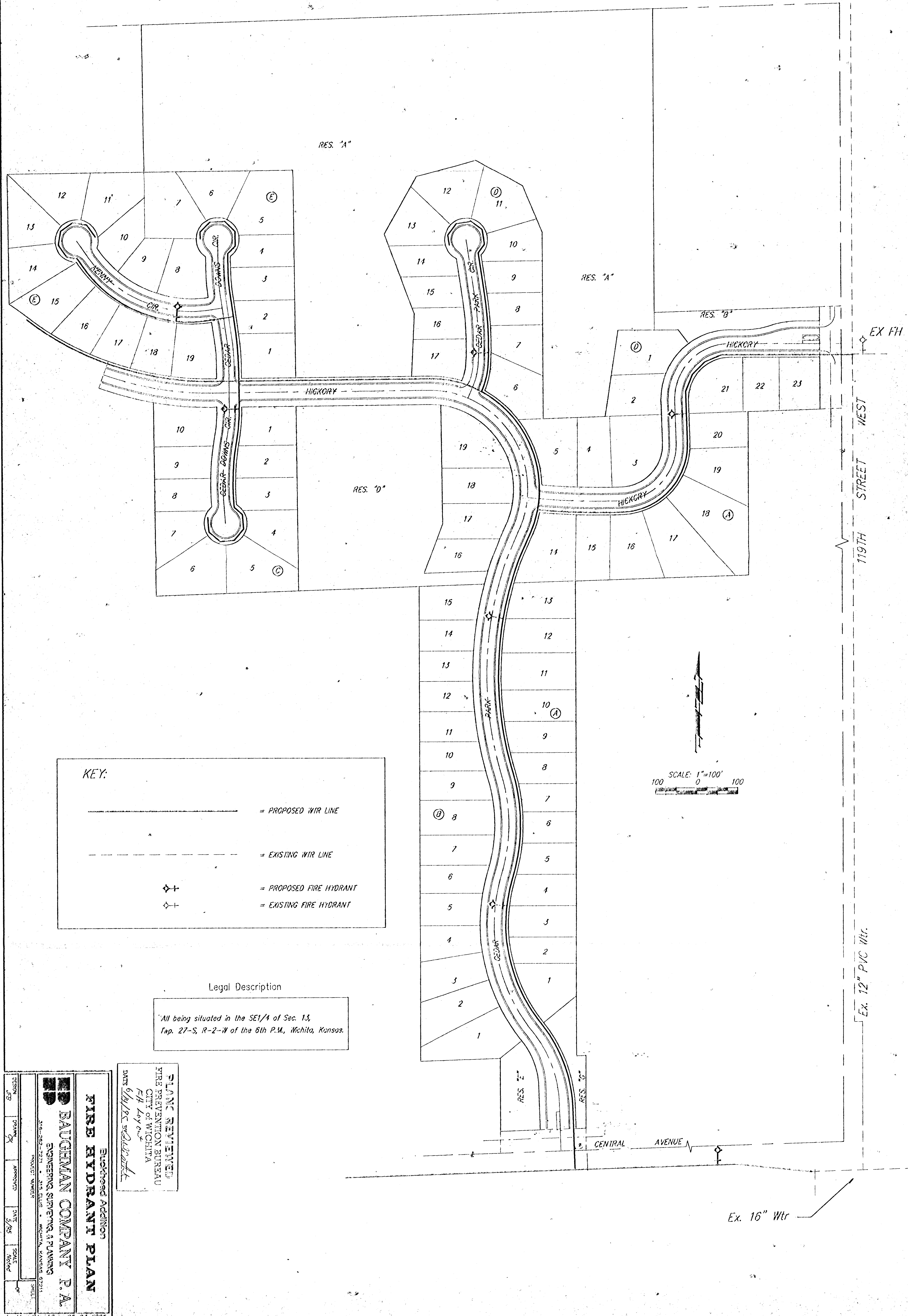


# FIRE HYDRANT LAYOUT PLAN

BUCKHEAD ADDITION  
WICHITA, SEDGWICK COUNTY, KANSAS



**KEY:**

	= PROPOSED WTR LINE
	= EXISTING WTR LINE
	= PROPOSED FIRE HYDRANT
	= EXISTING FIRE HYDRANT

Legal Description  
All being situated in the SE1/4 of Sec. 13,  
Twp. 27-S, R-2-W of the 6th P.M., Wichita, Kansas.

SEGWICK COUNTY  
ENGINEERING DEPARTMENT  
DATE: 6/14/20  
BY: [Signature]

**BAUGHMAN COMPANY P.A.**  
ENGINEERING, SURVEYING & PLANNING  
1111 N. WILSON ST.  
WICHITA, KANSAS 67202  
TEL: 343-1111

**FIRE HYDRANT PLAN**  
Buckhead Addition

PLAN REVIEWED  
FIRE PREVENTION BUREAU  
CITY OF WICHITA  
DATE: 6/14/20  
BY: [Signature]