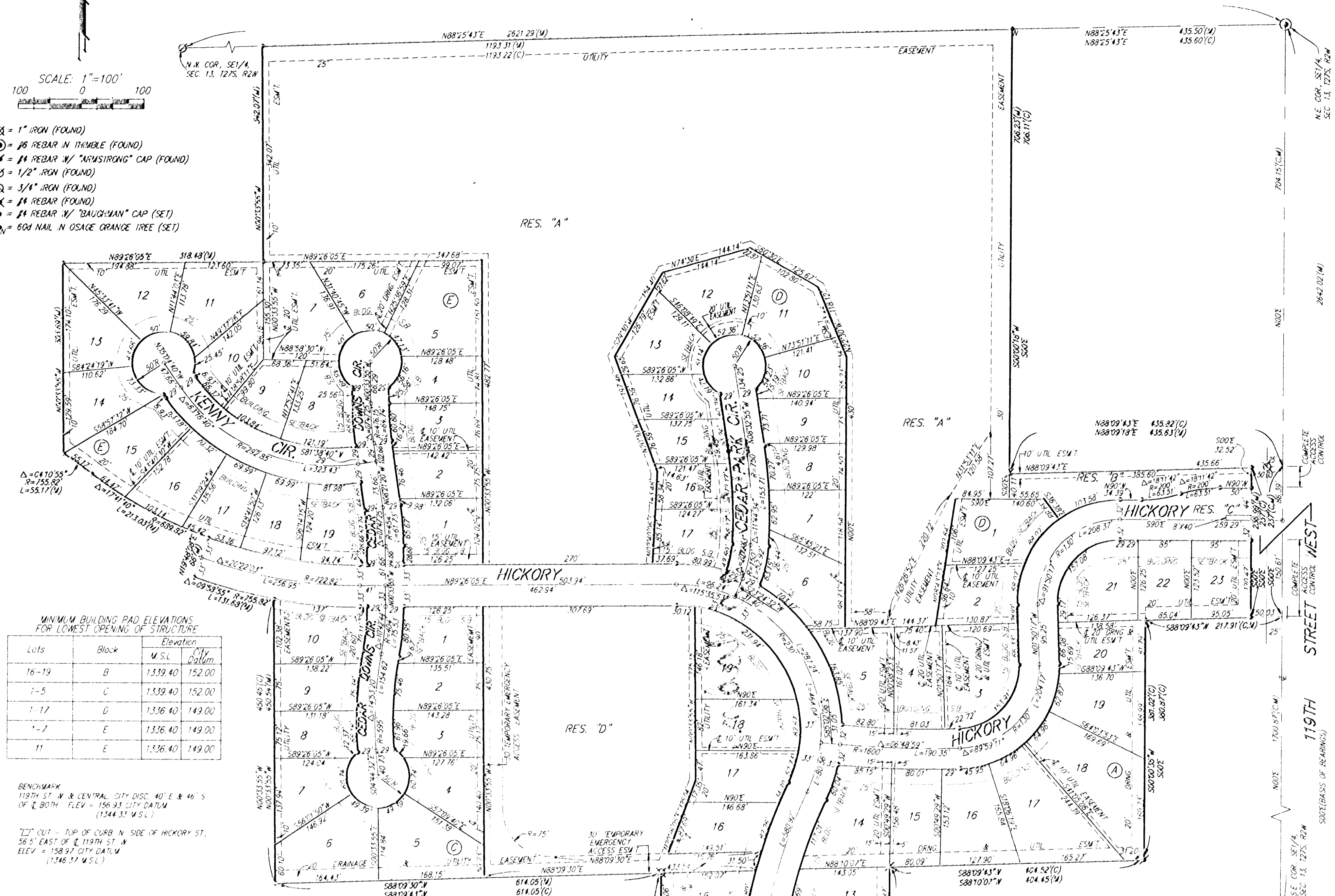


# BUCKHEAD ADDITION

## WICHITA, SEDGWICK COUNTY, KANSAS



BENCHMARK  
1976 ST. W. & CENTRAL ST. COR. NO. E. & 46 S.  
OF E. 80th. ELEV. = 156.25 (M.S.L.)  
(1544.31 M.S.L.)

TOP OF CURB N. SIDE OF HICKORY ST.  
56.5' EAST OF E. 119th ST. W.  
ELEV. = 158.07 (M.S.L.)  
(1548.57 M.S.L.)

State of Kansas)  
I, Paul E. Kelsey, Surveyor, do hereby certify that the above survey and plat of "BUCKHEAD ADDITION", Wichita, Sedgewick County, Kansas and that the accompanying plat is a true and correct exhibit of the property surveyed described as follows: A tract in the SE 1/4 of Sec. 13, Twp. 21-S., R. 2-W. of the 6th P.M., Sedgewick County, Kansas described as commencing at the S.E. Corner of said SE 1/4, thence north along the east line of said SE 1/4, 1,000.00 feet more or less to a point 1,000 feet north of the south line of said SE 1/4 as measured perpendicular to said south line, for a point of beginning, thence west parallel with the south line of said SE 1/4, 211.91 feet more or less to a point 211.8 feet west of the east line of said SE 1/4 as measured perpendicular to said east line, thence south parallel with the east line of said SE 1/4, 390.87 feet more or less to a point 1,520 feet north of the south line of said SE 1/4 as measured parallel with the east line of said SE 1/4, thence west parallel with the south line of said SE 1/4, 104.52 feet more or less to a point 622.43 feet west of the east line of said SE 1/4 as measured parallel with the south line of said SE 1/4, thence south parallel with the east line of said SE 1/4, 1102.09 feet more or less to a point 217.8 feet north of the south line of said SE 1/4 as measured perpendicular to the south line of said SE 1/4, thence east parallel with the south line of said SE 1/4, 22.12 feet more or less to a point 600 feet west of the east line of said SE 1/4 as measured perpendicular to said east line, thence south parallel with the east line of said SE 1/4, 217.91 feet more or less to a point on the south line of said SE 1/4, thence west along the south line of said SE 1/4, 200 feet more or less to a point 800 feet west of the east line of said SE 1/4 as measured perpendicular to said east line, thence north parallel with the east line of said SE 1/4, 217.91 feet more or less to a point 217.9 feet north of the south line of said SE 1/4 as measured perpendicular to said south line, thence west parallel with the south line of said SE 1/4, 126.29 feet more or less to a point 926.7 feet west of the east line of said SE 1/4 as measured parallel with the south line of said SE 1/4, thence north parallel with the east line of said SE 1/4, 1102.09 feet more or less to a point 1,520 feet north of the south line of said SE 1/4 as measured perpendicular to the south line of said SE 1/4, thence west parallel with the south line of said SE 1/4, 450.45 feet to a point on a curve to the right, thence along said curve, having a central angle of 89.3355' and a radius of 755.82 feet, in arc distance of 131.58 feet, (having a chord length of 131.51 feet bearing N51°12'00" E, thence N10°10'38" E along a radial line to the last described course, 66 feet to a point on a curve to the right, thence along said curve, having a central angle of 117°11'40" and a radius of 639.82 feet, in arc distance of 213.03 feet, (having a chord length of 212.19 feet bearing N81°21'01" W), to the P.C. of a curve to the left, thence along said curve, having a central angle of 04°10'55" and a radius of 755.82 feet, in arc distance of 55.17 feet, (having a chord length of 55.15 feet bearing N51°35'40" W), thence N00°33'55" W parallel with the west line of said SE 1/4, 303.69 feet, thence N89°28'05" E, 318.48 feet, thence N00°33'55" W parallel with the west line of said SE 1/4, 342.07 feet to a point on the north line of said SE 1/4, thence east along the north line of said SE 1/4, 1123.22 feet more or less to a point 1,355.6 feet west of the east line of said SE 1/4 as measured perpendicular to said east line, thence south parallel with the east line of said SE 1/4, 708.11 feet more or less to a point 1233 feet north of the south line of said SE 1/4 as measured perpendicular to said south line, thence east parallel with the south line of said SE 1/4, 435.82 feet more or less to a point on the east line of said SE 1/4, thence south along the east line of said SE 1/4, 231.06 feet more or less to the point of beginning.

Existing public easements and dedications being vacated by virtue of K.S.A. 12-512(b).

Baughman Company, P.A.  
*Gregory F. Severns*  
Gregory F. Severns  
3-16-95

This plat of "BUCKHEAD ADDITION", Wichita, Sedgewick County, Kansas has been submitted to and approved by the Wichita-Sedgewick County Metropolitan Area Planning Commission, Wichita, Kansas.  
Dated this 27th day of April, 1925.  
Wichita-Sedgewick County Metropolitan Area Planning Commission

*John W. McKay* Chairman  
John W. McKay, Jr.  
*Martin S. Kroul* Secretary  
Martin S. Kroul

This plat approved and all dedications shown hereon accepted by the City Council of the City of Wichita, Kansas, this 11th day of July, 1925.

*Bob Knight* Mayor  
*Pat Barnett* City Clerk  
Pat Barnett

Know all men by these presents that we, the undersigned, have caused the land in the surveyors certificate to be platted into Lots, Blocks, Streets, and Reserves to be known as "BUCKHEAD ADDITION", Wichita, Sedgewick County, Kansas. The utility easements are hereby granted as indicated for the construction and maintenance of all public utilities. The drainage and fire insurance easements are hereby granted as indicated for drainage purposes and for the construction and maintenance of all public utilities. The drainage easements are hereby granted as indicated for drainage purposes. The temporary emergency access easement is hereby granted as indicated for emergency access purposes and no fences or other obstructions shall be constructed or permitted on or within said easement. The temporary emergency access easement shall become null and void when a street access is provided either to the west or south of Reserves "A" and "D". Reserves "A" and "D" are hereby reserved for drainage, open space, barns, landscaping, sidewalks, gazebos, and utilities as confined to easements. Reserves "E" and "F" are hereby reserved for entry monuments, utilities, landscaping, and streets. Reserves "G", "H", and "I" are hereby reserved for drainage, open space, barns, landscaping, sidewalks, entry monuments, and utilities as confined to easements. The streets are hereby dedicated to and for the use of the public. All egress rights of access to or from 119th Street West over and across the east line of Reserve "B" and Lot 23, Block A, are hereby granted to the City of Wichita, Kansas. All egress rights of access to or from Central Avenue over and across the south line of Reserves "E" and "G" are hereby granted to the City of Wichita, Kansas. The Minimum Building Pad Elevations for lowest opening to the structures shall be as shown on the face of the plat.

*Paul E. Kelsey*  
Paul E. Kelsey

State of Kansas) SS the foregoing instrument acknowledged before me, this 16th day of May, 1925, by Paul E. Kelsey, a single person.

My App'l. Exp. 3/12/92  
*Philip J. Meyer* Notary Public  
Philip J. Meyer  
Notary Public  
STATE OF KANSAS

We, the undersigned, holders of a mortgage on the above described property, do hereby consent to this plat of "BUCKHEAD ADDITION", Wichita, Sedgewick County, Kansas.

The Prairie State Bank  
*Chris A. Anderson* Vice-President  
Chris A. Anderson

State of Kansas) SS the foregoing instrument acknowledged before me, this 16th day of May, 1925, by Chris A. Anderson, Vice-President of the Prairie State Bank, on behalf of the bank.

My App'l. Exp. 3/12/92  
*Philip J. Meyer* Notary Public  
Philip J. Meyer  
Notary Public  
STATE OF KANSAS

Entered on transfer record this \_\_\_\_\_ day of \_\_\_\_\_, 1925.

*Susan E. Crockett-Spoon* County Clerk  
Susan E. Crockett-Spoon

State of Kansas) SS This is to certify that this plat has been filed for record in the office of the Register of Deeds, this \_\_\_\_\_ day of \_\_\_\_\_, 1925, at \_\_\_\_\_ o'clock \_\_\_\_\_ M., and is duly recorded.

*Pat Kattler* Register of Deeds  
Pat Kattler  
*Ed Rosa* Deputy  
Ed Rosa