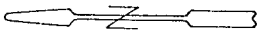


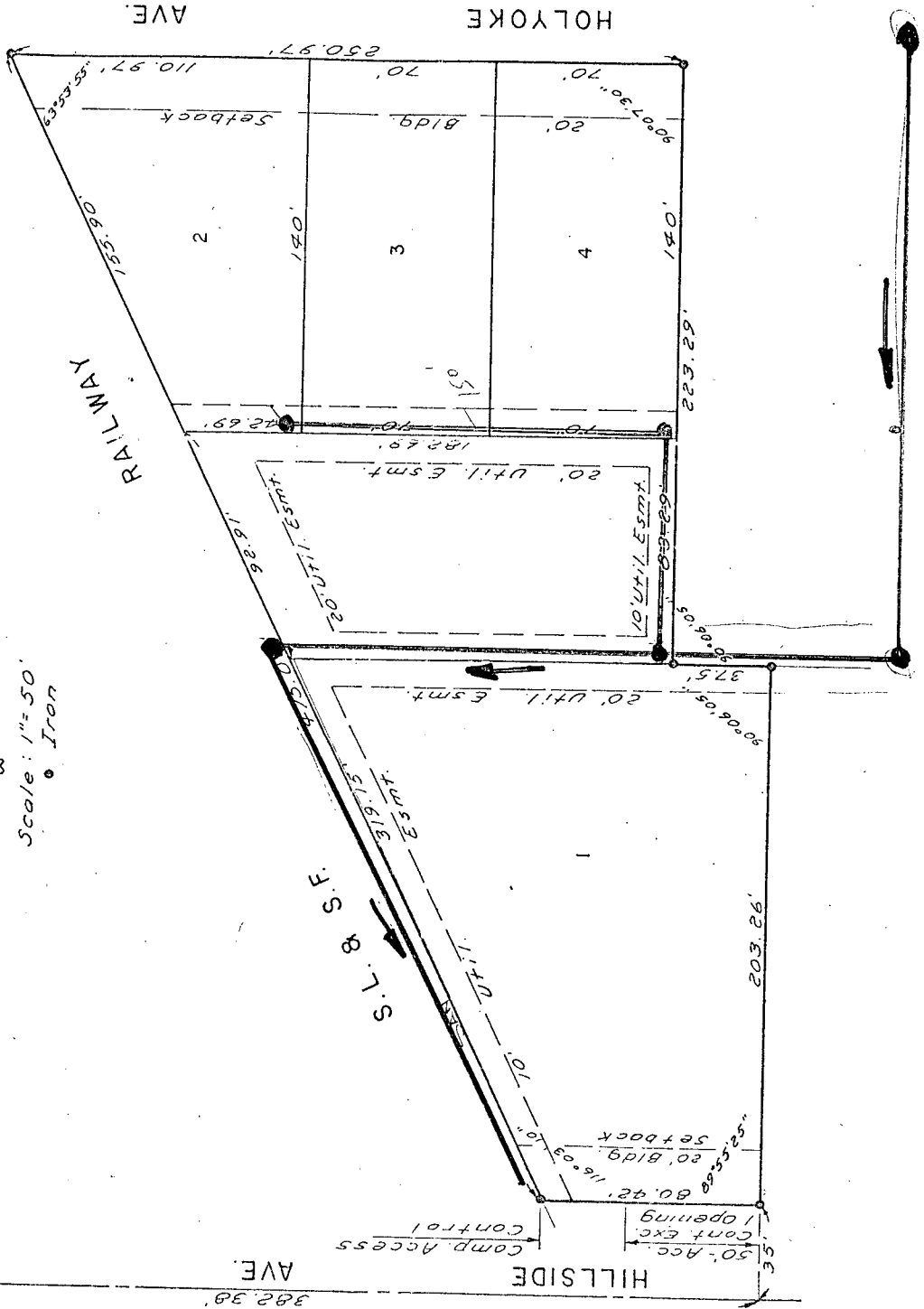
BUDETTI ADDITION

WICHITA, KANSAS

NW Cor. S.W. 1/4
Sec. 14-27-1E



Scale: 1" = 50'
Iron



This plot
Wichita, Kansas, has
approved by the Wi
Metropolitan Area
Wichita, Kansas. Da
_____, 1980.

Wichita - Sedgwick Co
Area Planning Comm

William V. Gee

Robert A. Lox

This plot appr
shown hereon accep
Commissioners, Wich
day of _____

Tony Casa

Donald C.