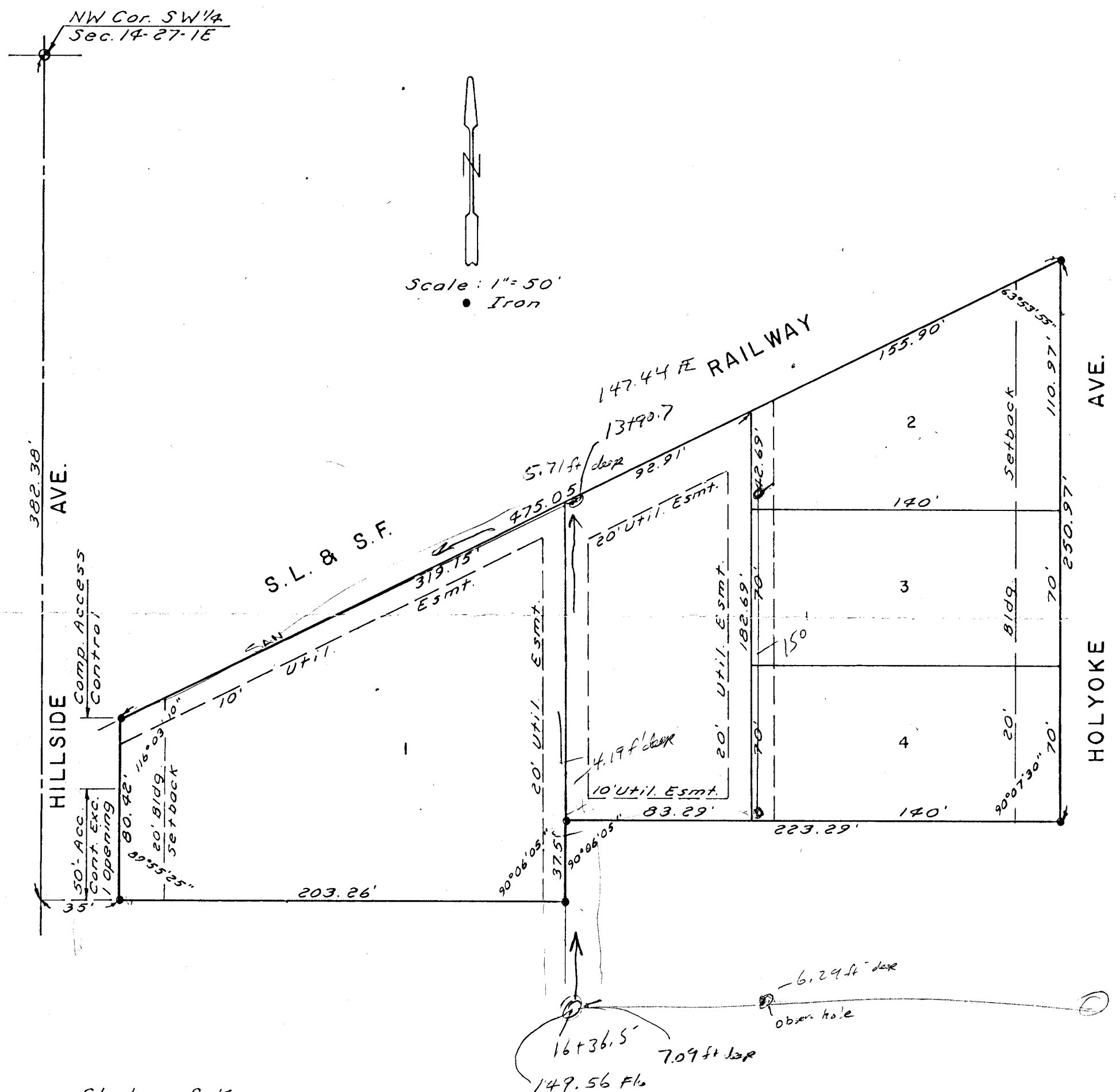


# BUDETTI ADDITION

WICHITA, KANSAS



This plat of "BUDETTI ADDITION", Wichita, Kansas, has been submitted to and approved by the Wichita-Sedgwick County Metropolitan Area Planning Commission, Wichita, Kansas, Dated this \_\_\_\_\_ day of \_\_\_\_\_, 1980.

Wichita-Sedgwick County Metropolitan Area Planning Commission

\_\_\_\_\_  
William J. Gabel Chairman  
\_\_\_\_\_  
Robert A. Larkin Secretary

This plat approved and all dedications shown hereon accepted by the Board of City Commissioners, Wichita, Kansas, this \_\_\_\_\_ day of \_\_\_\_\_, 1980.

\_\_\_\_\_  
Tony Casada Mayor  
\_\_\_\_\_  
Donald C. Bizjak City Clerk

This plat approved and all dedications shown hereon accepted by the Board of County Commissioners, Sedgwick County, Kansas, this \_\_\_\_\_ day of \_\_\_\_\_, 1980.

\_\_\_\_\_  
Tom Scott Chairman  
\_\_\_\_\_  
Everett Patrick Commissioner  
\_\_\_\_\_  
Donald E. Gragg Commissioner  
\_\_\_\_\_  
Dorothy K. White County Clerk

Entered on transfer record this \_\_\_\_\_ day of \_\_\_\_\_, 1980.

\_\_\_\_\_  
Dorothy K. White County Clerk

State of Kansas } S.S. We, Baughman Company, P.A., Surveyors in aforesaid county and state, do hereby certify that we have surveyed and plotted "BUDETTI ADDITION", Wichita, Kansas, and that the accompanying plat is a true and correct exhibit of the property surveyed, described as a replat of that part of Lot 1, Block 1 of Frisco Heights Addition to the City of Wichita, Kansas, lying south of the S.L. & S.F. Railway right of way, except for the west 35 feet taken for street (cond. case 30462) and also being a replat of the N 1/2 of Lot 3 and all of Lots 1, 2, 30, 31, 32, 33, 34, 35 and 36 of Bayce & Taylor's Addition to Wichita, Kansas, excepting the west 35 feet of said Lots 1, 2 and 3, taken for street (cond. case 30469), and including the west 1/2 of alley adjacent to said Lot 2 and the N 1/2 of Lot 3, and the N-S alley and the E-W alley adjacent to said Lots 30 thru 36. The alleys are being vacated by virtue of K.S.A. 1970 Supp. 12-512 (b).

Date \_\_\_\_\_ Baughman Company, P.A.

\_\_\_\_\_  
John E. Lundblade Surveyor

Know all men by these presents, that we, the undersigned, have caused the land described in the surveyors certificate to be platted into lots to be known as "BUDETTI ADDITION", Wichita, Kansas. The easements are hereby granted as indicated for the construction and maintenance of public utilities. All abutters rights of access to Hillside Ave. are hereby granted to the City of Wichita, Kansas, except, however, that Lot 1 shall have access to Hillside Ave. at one location over the south 50 feet of said lot.

\_\_\_\_\_  
Joseph A. Budetti

State of Florida } S.S. The foregoing instrument was acknowledged before me this \_\_\_\_\_ day of \_\_\_\_\_, 1980, by Joseph A. Budetti, a single man. In testimony whereof, I have hereunto set my hand and affixed my notarial seal the day and year above written.

\_\_\_\_\_  
Notary Public  
My Commission Expires \_\_\_\_\_

State of Kansas } S.S. This is to certify that this plat has been filed for record in the Office of the Register of Deeds this \_\_\_\_\_ day of \_\_\_\_\_, 1980, at \_\_\_\_\_ o'clock \_\_\_\_\_ M., and is duly recorded.

\_\_\_\_\_  
Della K. McCarr Register of Deeds  
\_\_\_\_\_  
Pat Rattler Deputy