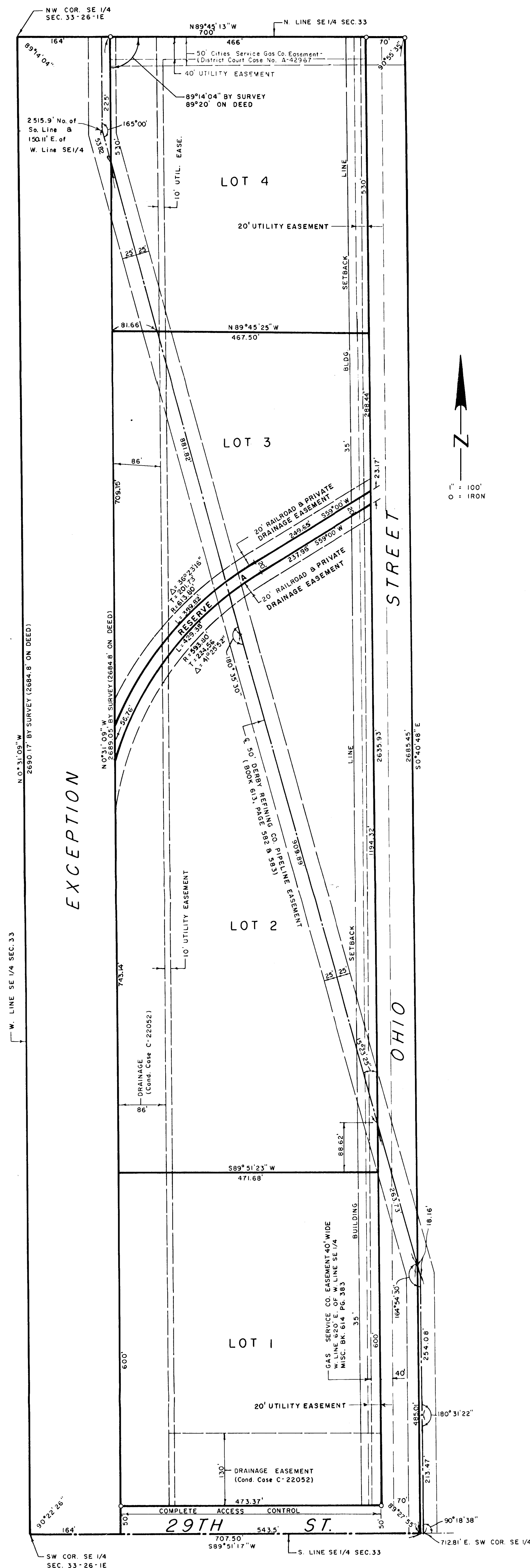


BURLINGTON NORTHERN INDUSTRIAL CENTER

WICHITA, SEDGWICK COUNTY, KANSAS

NOTE:
The bearing of the north line of the SE 1/4 of Section 33, T26S, R1E is assumed to be N89°45'13"W. Tract descriptions in Condemnation Case No. C-22052 refer to the bearing of the north line of said SE 1/4 as N89°07'47"E, the bearing of the south line of said SE 1/4 as N89°14'01"E, and the bearing of the west line of said SE 1/4 as N1°08'02"W.



State of Kansas, County of Sedgwick, SS.

I, Lowell D. High, Land Surveyor in said State and County do hereby certify that I have surveyed and platted "Burlington Northern Industrial Center," Wichita, Sedgwick County, Kansas and that the accompanying plat is a true and correct exhibit of said survey described as follows: A tract of land in the SE 1/4 of Section 33, T26S, R1E of the 6th P.M., Sedgwick County, Kansas, described as follows: Beginning at the SW corner of said SE 1/4; thence east along the south line of said SE 1/4, 707.50 feet; thence northerly to the north line of said SE 1/4 to a point 700 feet east of the NW corner of said SE 1/4; thence west along the north line of said SE 1/4, 700 feet to the NW corner of said SE 1/4; thence south along the west line of said SE 1/4 to the point of beginning, EXCEPT the west 164 feet thereof.

Lowell D. High, Land Surveyor
3-28-84

Know all men by these presents that Clarkland, Inc., a Missouri Corporation, by M.H. Kurl, Senior Assistant Vice President, has caused the land described in the Land Surveyor's certificate to be platted into Lots, Streets, and Reserve A to be known as "Burlington Northern Industrial Center", Wichita, Sedgwick County, Kansas.

The streets are hereby dedicated to and for the use of the public. Utility easements as indicated on the plat are hereby granted for the construction and maintenance of all public utilities.

All abutter's rights of access to or from 29th Street North over and across the south line of Lot 1 are hereby granted to the City of Wichita.

Reserve A is for construction and maintenance of trackage and other facilities of Clarkland, Inc., its successors and assigns.

The railroad and private drainage easements are for whatever embankment, spur tracks, drainage facilities and other uses necessary to construct and operate the main lead track and branches thereof to serve this area. Clarkland, Inc., its successors and assigns, having the right to construct, maintain, use, operate, relocate, reconstruct and renew such tracks and facilities, cuts, slopes and fills as it or they at any time, and from time to time desire within the railroad and drainage easement areas hereby reserved and within the street and utility easement areas hereby dedicated, if all city ordinances, regulations, rules and policies can and will be complied with.

Clarkland, Inc.
a Missouri Corporation.

M.H. Kurl, Senior Assistant Vice President

J. J. Hanks, Assistant Secretary

State of Minnesota, County of Ramsey; SS.

Be it remembered that on this 30th day of MAY, 1984, before me a notary public in aforesaid county and state came M.H. Kurl, Senior Assistant Vice President and to me known to be the same persons who executed the foregoing instrument of writing and duly acknowledged the execution of the same for and on behalf and as the act and deed of said corporation. In testimony whereof I have hereunto set my hand and affixed my notarial seal the day and year above written.

My commission expires: APRIL 22, 1990 *R.H. Brokamp*, Notary Public

This plat of "Burlington Northern Industrial Center", Wichita, Sedgwick County, Kansas has been submitted to and approved by the Wichita-Sedgwick County Metropolitan Area Planning Commission, Wichita, Kansas.

Dated this 8th day of March, 1984.

Wichita-Sedgwick County Metropolitan
Area Planning Commission
Robert A. Christman, Chairman
Robert A. Lakert, Secretary

This plat approved and all dedications shown hereon accepted by the Board of City Commissioners of the City of Wichita, Kansas, this 4th day of SEPT, 1984.

Robert G. Kurl, Mayor
Donald C. Gystek, City Clerk

This plat approved and all dedications shown hereon accepted by the Board of County Commissioners of Sedgwick County, Kansas, this ___ day of ___, 1984.

Jack Spratt, Chairman
Donna E. Graff, Commissioner
Tom Seiff, Commissioner

ATTEST:
Dorothy K. White, County Clerk

Entered on transfer record this ___ day of ___, 19__.

Dorothy K. White, County Clerk

State of Kansas, County of Sedgwick, SS.

This is to certify that this instrument was filed for record in the Register of Deeds office at ___ o'clock ___, m., on the ___ day of ___, 19__.

Bette F. McCart, Register of Deeds
Pat Kettler, Deputy