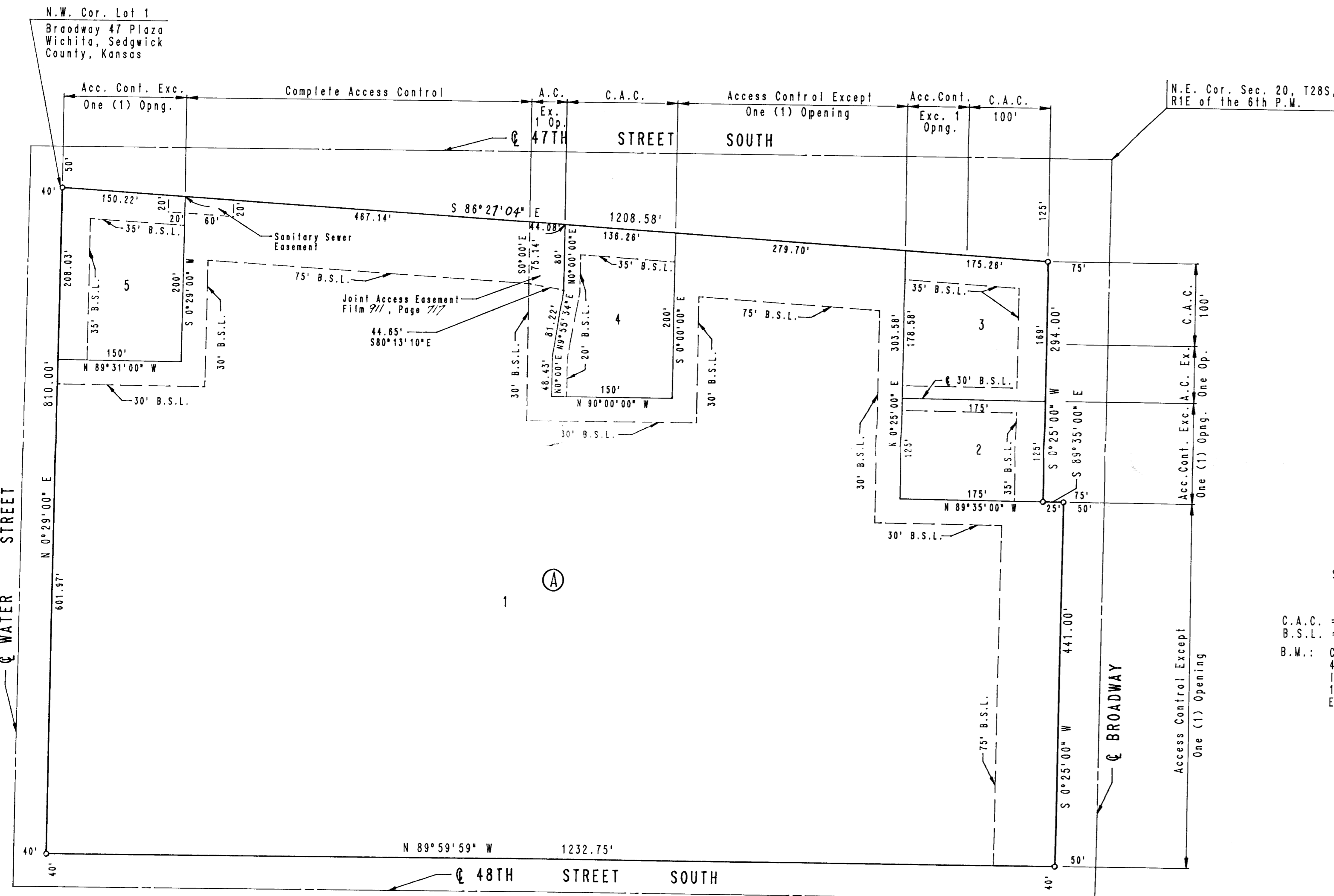


BROADWAY 47 PLAZA 2ND ADDITION TO WICHITA, SEDGWICK COUNTY, KANSAS



NOTE: BUILDING SETBACKS FROM 48TH STREET AND WATER STREET, ON LOT 1, ARE PER THE REQUIREMENTS OF BROADWAY 47 PLAZA COMMERCIAL COMMUNITY UNIT PLAN (DP-28) ON FILE WITH THE WICHITA-SEDGWICK COUNTY METROPOLITAN AREA PLANNING DEPARTMENT.

SCALE: 1" = 100'
 ○ = IRON SET
 C.A.C. = COMPLETE ACCESS CONTROL
 B.S.L. = BUILDING SETBACK LINE
 B.M.: CITY OF WICHITA BRASS CAP 40.8' E. AND 44.4' N. OF 8'S INTERSECTIONS BROADWAY AND 143RD ST. ELEV. = 85.98 CITY DATUM



STATE OF KANSAS)
 COUNTY OF SEDGWICK) SS

I, R.W. LINN, A PROFESSIONAL ENGINEER IN AFORESAID STATE AND COUNTY, DO HEREBY CERTIFY THAT ON THIS 20th DAY OF April 1987, I HAVE CAUSED TO BE SURVEYED AND PLATTED BROADWAY 47 PLAZA 2ND ADDITION, TO WICHITA, SEDGWICK COUNTY, KANSAS, INTO LOTS AND A BLOCK, THE SAME BEING A REPLAT OF AND DESCRIBED AS: LOT 1, BROADWAY 47 PLAZA, WICHITA, SEDGWICK COUNTY, KANSAS.

R.W. Linn, R.W. LINN, P.E. 3684

KNOW ALL MEN BY THESE PRESENTS THAT WE, THE UNDERSIGNED PROPERTY OWNERS OF THE LAND, AS ABOVE SET FORTH IN THE ENGINEER'S CERTIFICATE, HAVE CAUSED THE LAND TO BE SURVEYED AND PLATTED INTO LOTS AND A BLOCK, THE SAME TO BE KNOWN AS BROADWAY 47 PLAZA 2ND ADDITION TO WICHITA, SEDGWICK COUNTY, KANSAS. EASEMENTS AS INDICATED FOR THE CONSTRUCTION AND MAINTENANCE OF PUBLIC UTILITIES ARE HEREBY GRANTED. ALL PORTIONS OF LOT 1, BROADWAY 47 PLAZA, WICHITA, SEDGWICK COUNTY, KANSAS, WITHIN THE ABOVE DESCRIBED TRACT OF LAND ARE HEREBY VACATED AND REPLATTED BY VIRTUE OF K.S.A. 12-512(b), AMENDED. ALL ABUTTER'S RIGHTS OF ACCESS TO AND FROM BROADWAY AND 47TH STREET SOUTH OVER AND ACROSS THE EAST LINE OF LOTS 1, 2 AND 3 AND THE NORTH LINE OF LOTS 1, 3, 4 AND 5 ARE HEREBY GRANTED TO THE CITY OF WICHITA. PROVIDED, HOWEVER, THAT LOT 1 SHALL HAVE ACCESS TO 47TH STREET SOUTH AT TWO (2) LOCATIONS AND LOTS 3 AND 5 SHALL HAVE ACCESS TO BROADWAY AT (1) ONE LOCATION EACH AND LOTS 1, 2 AND 3 SHALL HAVE ACCESS TO BROADWAY AT (1) ONE LOCATION EACH, AS SHOWN. BUILDING SETBACKS FROM 48TH STREET AND WATER STREET, ON LOT 1, ARE PER THE REQUIREMENTS OF BROADWAY 47 PLAZA COMMERCIAL COMMUNITY UNIT PLAN (DP-28) ON FILE WITH THE WICHITA-SEDGWICK COUNTY METROPOLITAN AREA PLANNING DEPARTMENT.

OWNER: FRANK P. CRIVELLO

STATE OF KANSAS)
 COUNTY OF SEDGWICK) SS

BE IT REMEMBERED THAT ON THIS 31st DAY OF JULY 1987, BEFORE ME, A NOTARY PUBLIC IN AFORESAID STATE AND COUNTY, CAME FRANK P. CRIVELLO, TO ME PERSONALLY KNOWN TO BE THE SAME PERSON WHO EXECUTED THE FOREGOING INSTRUMENT OF WRITING AND DULY ACKNOWLEDGE THE EXECUTION OF SAME AS HIS VOLUNTARY ACT AND DEED. IN TESTIMONY WHEREOF I HAVE HEREUNTO SET MY HAND AND AFFIXED MY NOTARIAL SEAL THE DAY AND YEAR ABOVE WRITTEN.

Robert H. Taper, NOTARY PUBLIC

MY COMMISSION EXPIRES: 12 PERMANENT



WE, METRO NORTH STATE BANK, N.A., HOLDER OF A MORTGAGE ON THE ABOVE DESCRIBED PROPERTY, DO HEREBY CONSENT TO THE PLATTING OF BROADWAY 47 PLAZA 2ND ADDITION TO WICHITA, SEDGWICK COUNTY, KANSAS.

BY: *Jeff Johnson*, VICE - PRESIDENT

BE IT REMEMBERED THAT ON THIS 20th DAY OF April 1987, BEFORE ME, A NOTARY PUBLIC IN AFORESAID STATE AND COUNTY, CAME PERSONALLY KNOWN TO BE THE SAME PERSON WHO EXECUTED THE FOREGOING INSTRUMENT OF WRITING AND DULY ACKNOWLEDGE THE EXECUTION OF SAME FOR AND ON BEHALF AND AS THE VOLUNTARY ACT AND DEED OF SAID BANK IN TESTIMONY WHEREOF I HAVE HEREUNTO SET MY HAND AND AFFIXED MY NOTARIAL SEAL THE DAY AND YEAR ABOVE WRITTEN.

Nola A. Brown, NOTARY PUBLIC

MY COMMISSION EXPIRES: _____

THIS PLAT HAS BEEN SUBMITTED TO AND APPROVED BY THE WICHITA-SEDGWICK COUNTY METROPOLITAN AREA PLANNING COMMISSION, WICHITA, KANSAS, DATED THIS 16TH DAY OF APRIL, 1987.

Mary Ellen Conlee, Mary Ellen Conlee, VICE-CHAIRMAN
Marvin S. Krout, MARVIN S. KROUT, SECRETARY

THIS PLAT APPROVED AND ALL DEDICATIONS SHOWN HEREON ARE ACCEPTED BY THE CITY COUNCIL OF THE CITY OF WICHITA, KANSAS. DATED THIS 23rd DAY OF April, 1987.

Robert G. Knight, ROBERT G. KNIGHT, MAYOR
Dale E. Rea, DALE E. REA, DEPUTY CITY CLERK

ENTERED ON TRANSFER RECORD THIS _____ DAY OF _____ 1987.

Don Wright, DON WRIGHT, COUNTY CLERK

THIS IS TO CERTIFY THAT THIS INSTRUMENT WAS FILED FOR RECORD IN THE REGISTER OF DEEDS OFFICE AT _____ M., ON THIS _____ DAY OF _____, 1987.

Pat Kettler, PAT KETTLER, REGISTER OF DEEDS
Ed Resa, ED RESA, DEPUTY