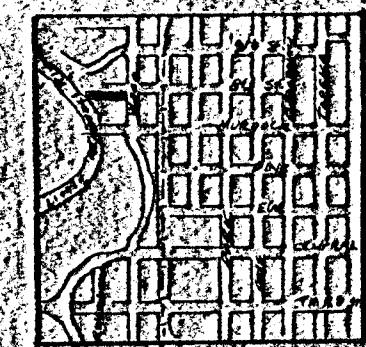
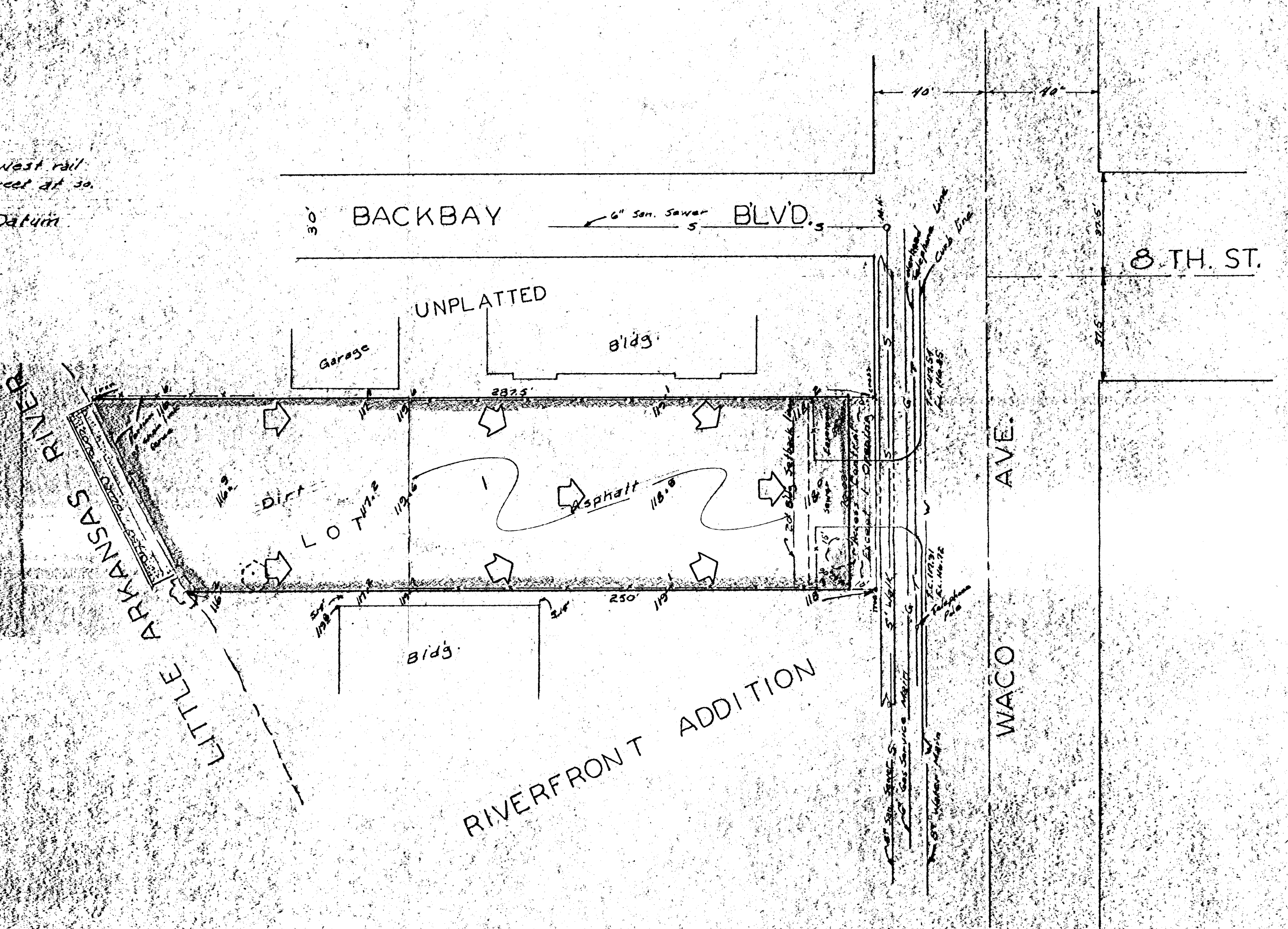


Scale : 1" = 30'
 BENCH MARK: Top of West rail
 of tracks in Wichita Street at 30'
 line of Murdock Ave.
 Elev. = 115.84 City Datum

LEGAL DESCRIPTION
 The N 1/2 of Lot 107, all of Lot 108 and the south
 25 feet of Lot 111 on West 1st Street in Munger's Original
 Town of Wichita and that part of vacated
 lots west of said lots and that part of Lots 1
 and 2 on Walnut Street as follows: Beginning at
 the S.W. corner of the N 1/2 of said Lot 107; thence
 north 70 feet; thence west to east bank of Little
 Arkansas River; thence southeasterly along the
 east bank of River to a point directly west of
 place of beginning; thence east to beginning;
 in Sedgewick County, Kansas.



Vicinity Map



DRAINAGE PLAN
BROOKER RIVERSIDE ADDITION

BAUGHMAN COMPANY, P.A.
 SURVEYING & ENGINEERING
 316/202-7271 • 330 W. 10th St. • WICHITA, KANSAS 67211

Date May 8, 1981