

Henry J. Brown Addn.

# HENRY J. BROWN ADDITION

WICHITA, KANSAS.

State of Kansas? ss. We, Baughman Company, P.A., Survey Sedgewick County, and state do hereby certify that we have surveyed and platted "HENRY J. BROWN ADDITION", Wichita, Kansas and that the accompanying plat is a true and correct exhibit of the property surveyed described as and being a replat of the north 264 feet of Lot 7, except the west 30 feet thereof, except that part condemned for I-235 Highway in Case No. A-77196 (text #47), Central Ave., Sedgewick County, Kansas. Easements being vacated by virtue of K.S.A. 12-612(b). Being situated in the NE1/4 of Sec. 22, Twp. 27S, R-1W of the 6th P.M., Sedgewick County, Kansas. Baughman Company, P.A.

11-5-84  
Date  
William C. Forber  
Surveyor

Know all men by these presents that we, the undersigned have caused the land described in the surveyor's certificate to be platted into a lot to be known as "HENRY J. BROWN ADDITION", Wichita, Kansas. The easement is hereby granted as indicated for the construction and maintenance of all public utilities. All abutters rights of Access to or from Central Ave., over and across the north line of Lot 1, and to or from I-235 Highway over and across the east line of Lot 1, are hereby granted to the City of Wichita provided however that Lot 1 shall have access to Central Ave. at 1 point over the north line of said Lot 1, as shall be determined by the City Engineer of the City of Wichita, Kansas.

Donald J. Walenta  
Ann T. Walenta

State of Kansas? ss. The foregoing instrument was acknowledged before me this 14th day of November 1984, by Donald J. Walenta and Ann T. Walenta, his wife.

Mark A. Lawler  
Notary Public  
My App't. Exp. 12 May 88

We, the undersigned holders of a mortgage on the above described property do hereby consent to this plat of "HENRY J. BROWN ADDITION", Wichita, Kansas.

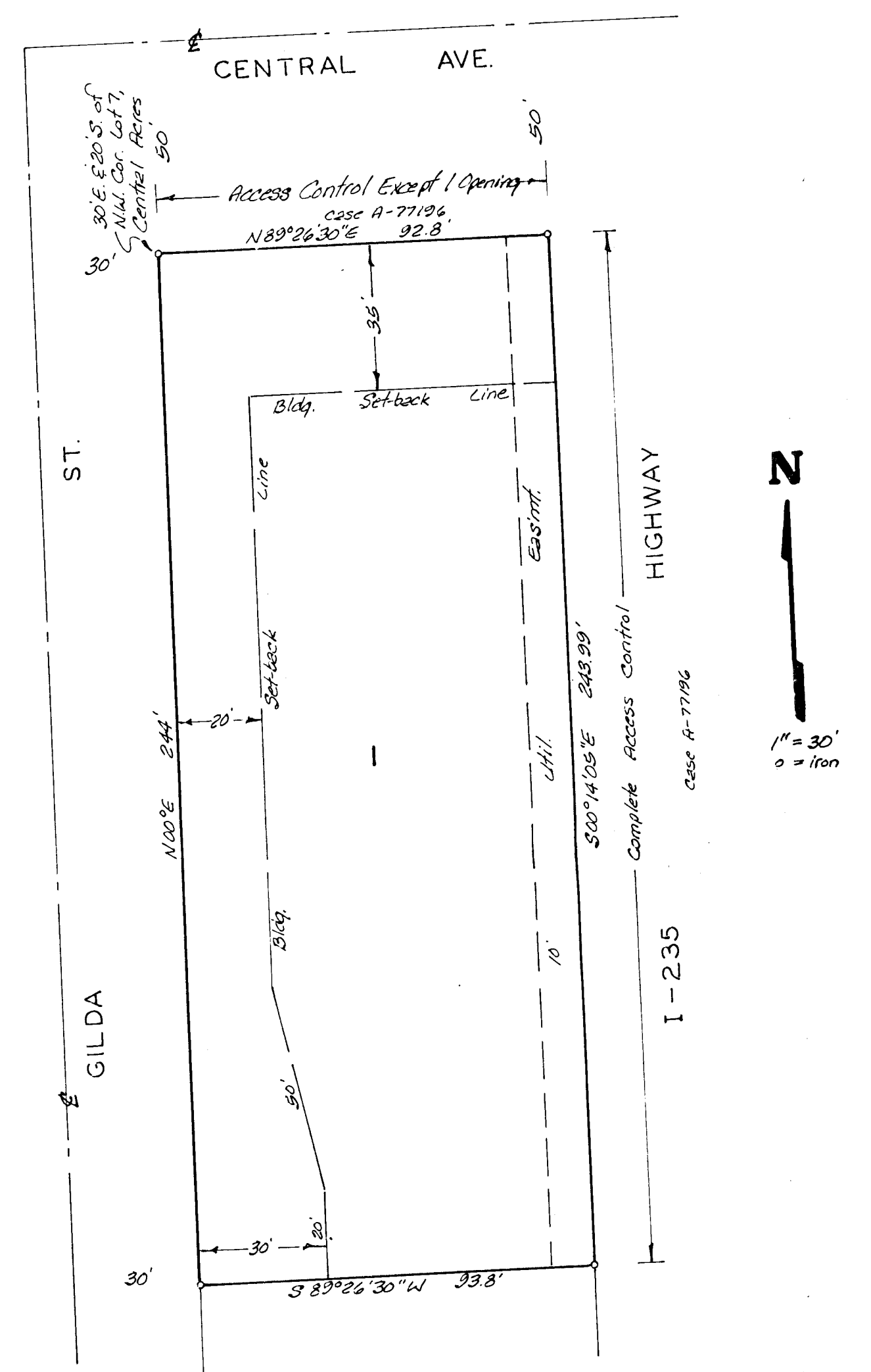
Central Bank & Trust  
J. L. Williams, Jr.  
S. S. 11/15/84

State of Kansas? ss. The foregoing instrument was acknowledged before me this 14th day of November 1984, by J. L. Williams, Jr., President of Central Bank & Trust, on behalf of the corporation.

Michael T. Sawyer  
Notary Public  
My App't. Exp. 11/15/84

Entered on transfer record this  
day of 1984.  
Michael T. Sawyer  
County Clerk

State of Kansas? ss. This is to certify that this plat has been Sedgewick County, Kansas. This is to certify that this plat has been filed for record in the office of the Register of Deeds this day of 1984, at o'clock M; and is duly recorded.  
Bette F. McCarl  
Register of Deeds  
Pat Ketter  
Deputy



This plat of "HENRY J. BROWN ADDITION", Wichita, Kansas, has been submitted and approved by the Wichita-Sedgewick County Metropolitan Area Planning Commission, Wichita, Kansas, dated this 1st day of December 1983.

Wichita-Sedgewick County Metropolitan Area Planning Commission  
James C. Wilson  
Vice Chairman  
Robert A. Lakin  
Secretary

This plat approved and all dedications shown hereon accepted by the Board of Commissioners of the City of Wichita, Kansas, this 14th day of November 1984.

Robert C. Smith  
City Clerk  
Donald C. Chisick

This plat approved and all dedications shown hereon accepted by the Board of Commissioners of Sedgewick County, Kansas, this day of 1984.

Jack Spratt  
Chairman  
Donald E. Bragg  
Commissioner  
Tom Scott  
Commissioner  
Michael T. Sawyer  
County Clerk