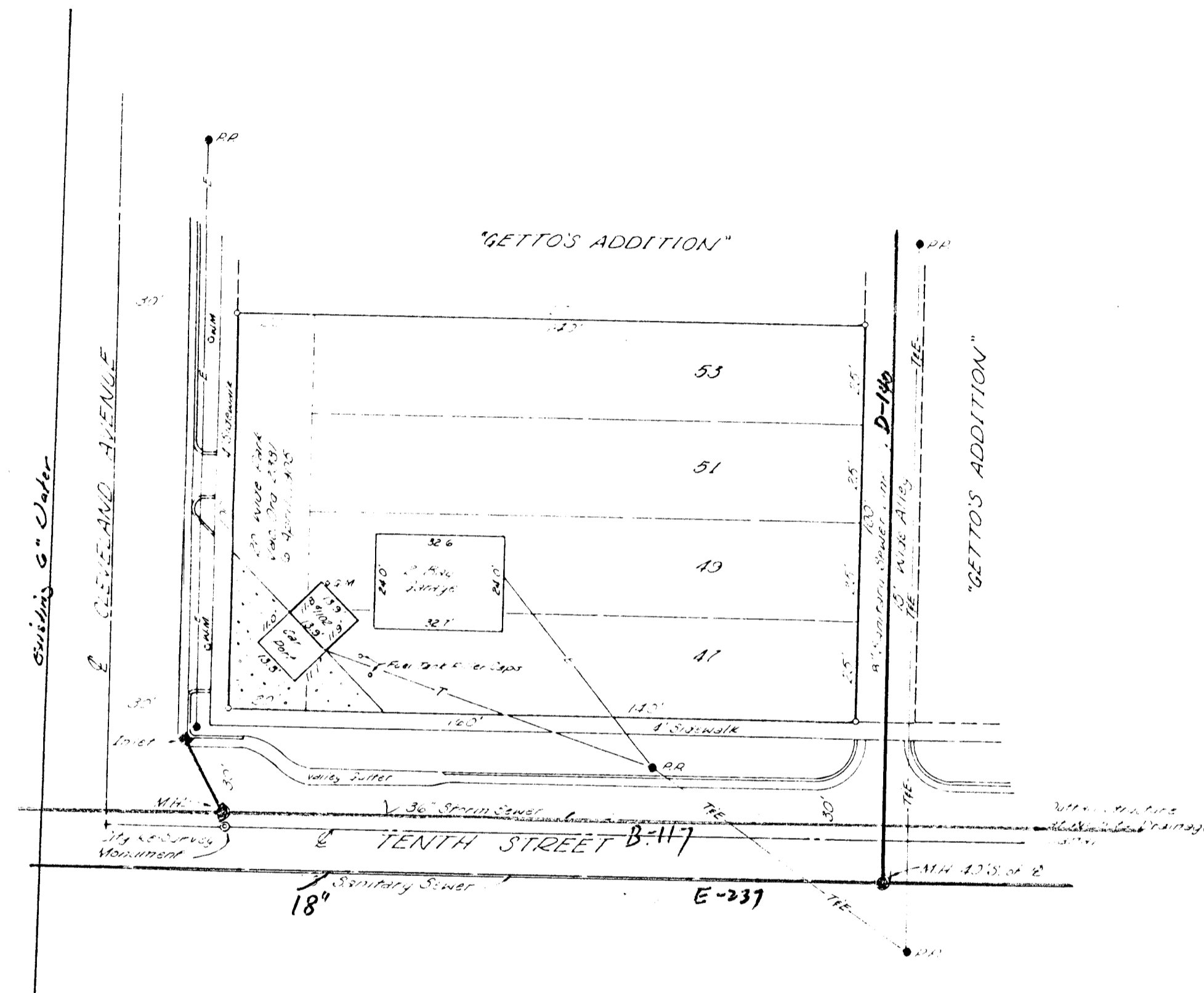


VICINITY MAP OF:
"JEFF BRUCE ADDITION"
 WICHITA, SEDGWICK COUNTY, KANSAS
 (NE 1/4 SEC. 16, T27S, R1E)
 ASSOCIATED ZONING CASE Z-2658



OWNER/SUBDIVIDER:
 JEFF BRUCE
 1102 CLEVELAND
 WICHITA, KANSAS 67214
 TELE. 264-9698

LEGAL DESCRIPTION:
 LOTS 47, 49, 51, 53 AND THE VACATED 20' WIDE PARK
 ADJOINING ON THE WEST, ON CLEVELAND AVENUE, IN
 "GETTO'S ADDITION" TO THE CITY OF WICHITA, KANSAS.

TERRA TECH
 LAND SURVEYING INC.
 245 West Dewey
 Wichita, Kansas 67202-3607
 (316) 267-0744 / 267-2348