

PRELIMINARY PLAT

BRAD BOONE ADDITION

LOT 1, BLOCK 2, E. E. JABES ADDITION TO WICHITA, SEDGWICK COUNTY, KANSAS.

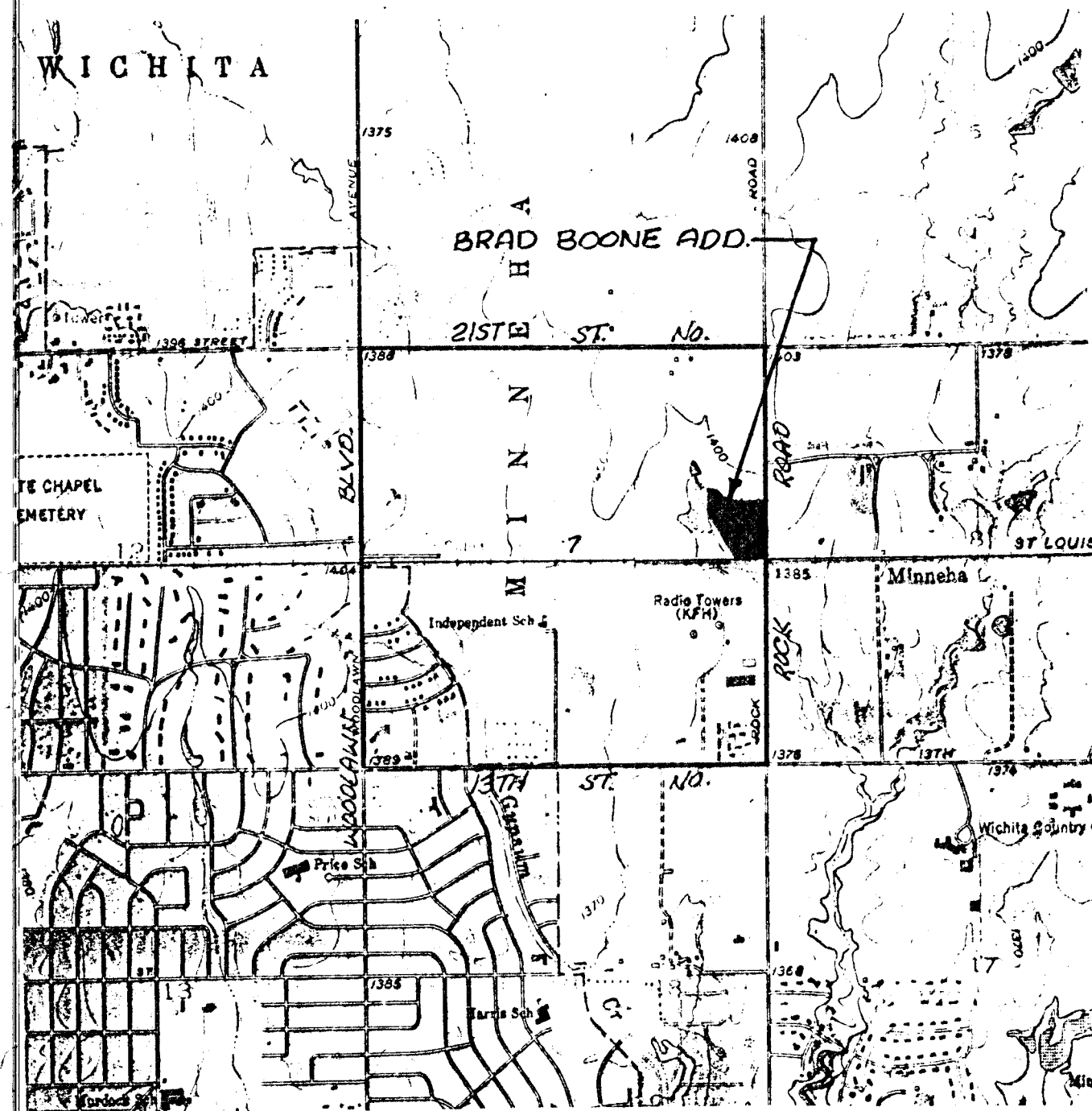
ROBERT B. BOONE

N

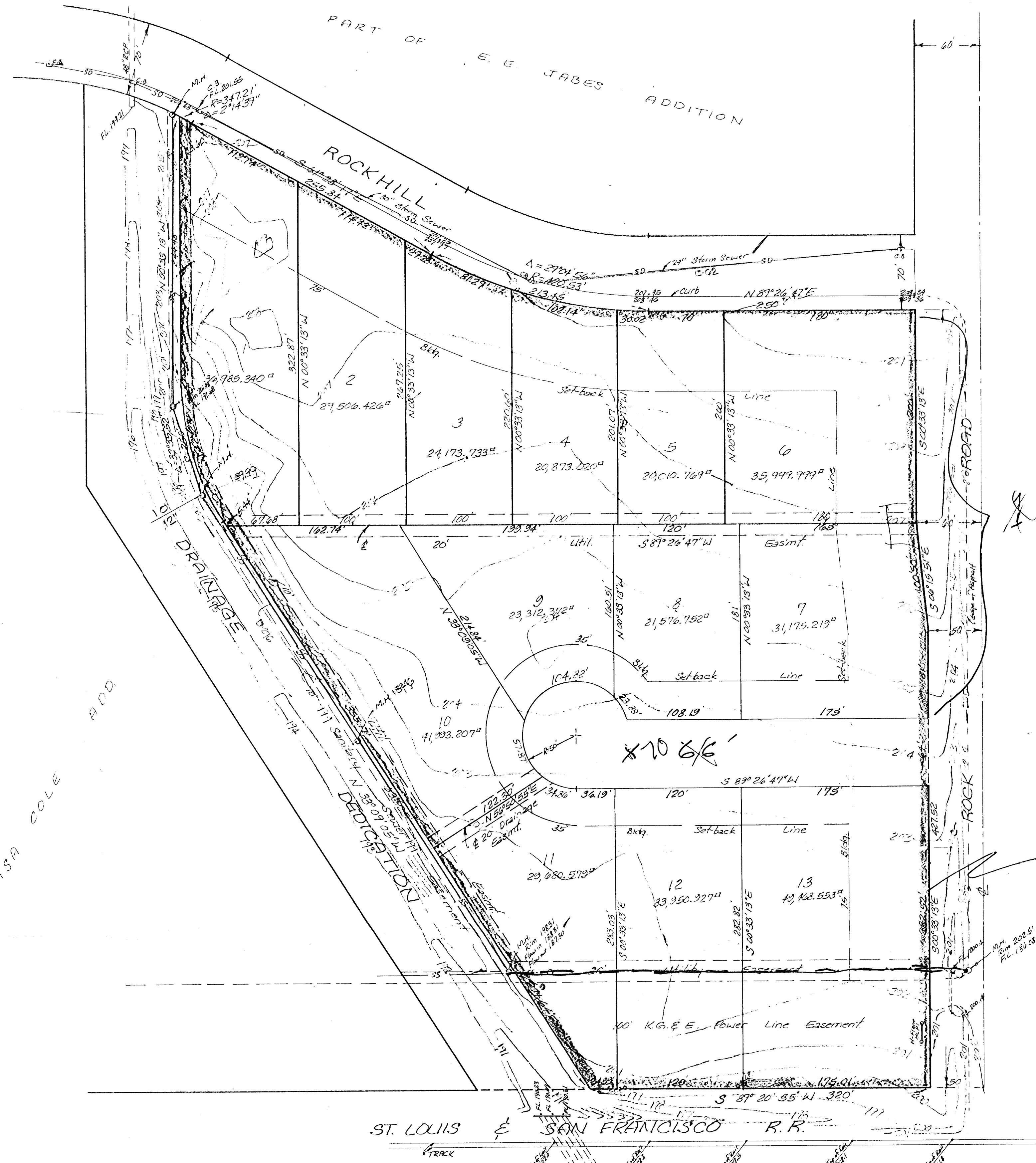
1" = 60'
Elev. = City Datum

BENCH MARK:
City Standard Disc (17th & Rock Rd)
28' E of E Rock Rd & 51' N. of
E R.R. Tracks
Elev. = 199.701 City Datum

LOT GRADING PLAN:
The lots shall be graded to
drain to the streets and drain-
age ditch via approved
driveways, flumes, inlets, etc.
at the time of development.



VICINITY PLAT
1" = 2,000'



Complete
& point of access

Complete
access
Control

NOTE:
GROSS SIZE OF PLAT
425,103.237 sq. ft.
9.757 acres