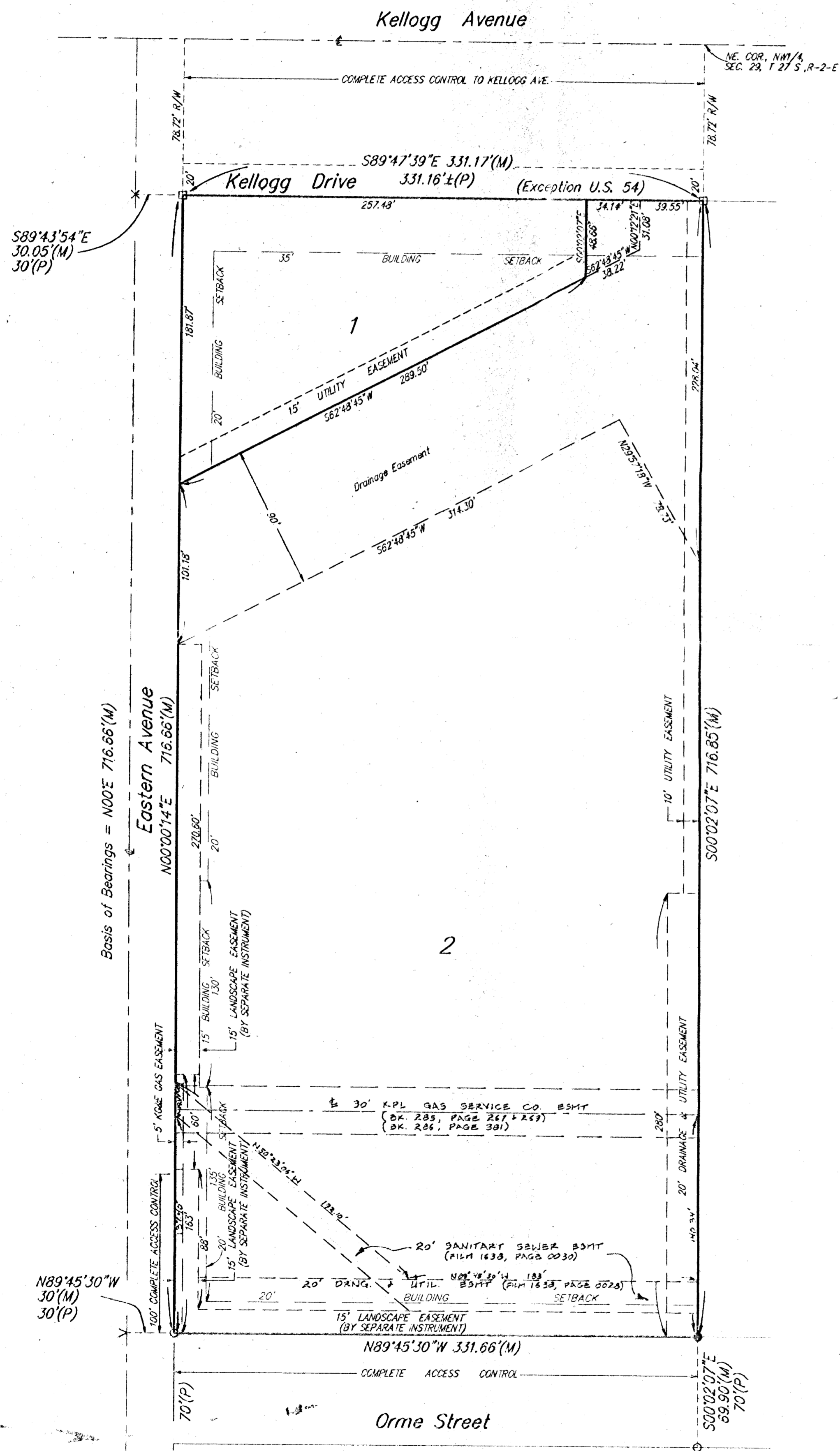


CIRCUIT CITY ADDITION

WICHITA, SEDGWICK COUNTY, KANSAS



- (M) = Measured
- (P) = Platted
- x = Chiseled Cross Found
- = 3/4" Iron Pipe Found
- = 1/2" Iron Pipe Found
- ^ = Chiseled V-Notch Found
- = #4 Baughman Rebar Set

The Minimum Building Pad Elevation for the lowest opening to the structures on all Lots shall be: 1.334.0 M.S.L. (146.6 City Datum)

No new building may be constructed on Lot 1 until a letter of Map Revision (LCMR) has been granted by Federal Emergency Management Agency, or unless new building fits within the existing building footprint. Any new building construction on Lot 1 shall meet the specified Minimum Pad as shown on the face of the plat.

BENCHMARK:
Eastern & Kellogg, City of Wichita Disc, 101.4' S. of Sec. Line on Kellogg & 92' S. of E. of Kellogg pavement, 23.6' W. of E. of Eastern Elev. = 144.762 City Datum

State of Kansas) SS We, Baughman Company, P.A., Surveyors in Sedgwick County and State do hereby certify that we have surveyed and platted "CIRCUIT CITY ADDITION", Wichita, Sedgwick County, Kansas and that the accompanying plat is a true and correct exhibit of the property surveyed, described as and being a replat of Lot 1 and 2, Weaver-Reimold Addition to Wichita, Kansas, together with Lot 1, Executives Inc. Addition, Wichita, Kansas.

All being located in the NW1/4 of Sec. 29, Twp. 27-S, R-2-E of the 6th P.M., Sedgwick County, Kansas.

Existing public easements and dedications being vacated by virtue of K.S.A. 12-512(b).

Baughman Co., P.A.

Gregory F. Saverns

This plat of "CIRCUIT CITY ADDITION", Wichita, Sedgwick County, Kansas has been submitted to and approved by the Wichita-Sedgwick County Metropolitan Area Planning Commission, Wichita, Kansas.
Dated this 15th day of February, 1996.
Wichita-Sedgwick County Metropolitan Area Planning Commission

Chair
Susan Osborne-Hawes
 Secretary
Marvin S. Krout

This plat approved and all dedications shown hereon accepted by the City Council of the City of Wichita, Kansas, this 24th day of September, 1996.

Mayor
Bob Knight
 City Clerk
Pat Burnett

Know all men by these presents that we, the undersigned, have caused the land in the surveyors certificate to be platted into Lots to be known as "CIRCUIT CITY ADDITION", Wichita, Sedgwick County, Kansas. The utility easements are hereby granted as indicated for the construction and maintenance of all public utilities. The drainage and utility easement is hereby granted as indicated for drainage purposes. The KG&E gas line easement is hereby granted as indicated for the construction and maintenance of a KG&E gas line. All abutters rights of access to or from Kellogg Avenue over and across the north line of Lot 2, and to or from Orme Street over and across the south line of Lot 2, and to or from Eastern Avenue over and across the south 100 feet of the west line of Lot 2 are hereby granted to the City of Wichita, Kansas. The Minimum Building Pad Elevations for the lowest opening to the structures on all Lots shall be 1.334.0 M.S.L. (146.6 City Datum).

Circuit City Stores, Inc., a Virginia Corporation

JP
BRUCE LUCAS (709)

Entered on transfer record this _____ day of _____, 1996.

County Clerk
Susan E. Crockett-Spoon

State of Virginia) SS The foregoing instrument acknowledged before me this 26th day of AUGUST, 1996, by BRUCE LUCAS, Vice Pres. or Controller, of Circuit City Stores, Inc., a Virginia Corporation, on behalf of the corporation.

Notary Public
CARL P. BRANDT
My App't. Exp. 2/28/97

State of Kansas) SS This is to certify that this plat has been filed for record in the office of the Register of Deeds, this _____ day of _____, 1996, at _____ o'clock _____ M; and is duly recorded.

Register of Deeds
Pat Kettler
 Deputy
Ed Resu