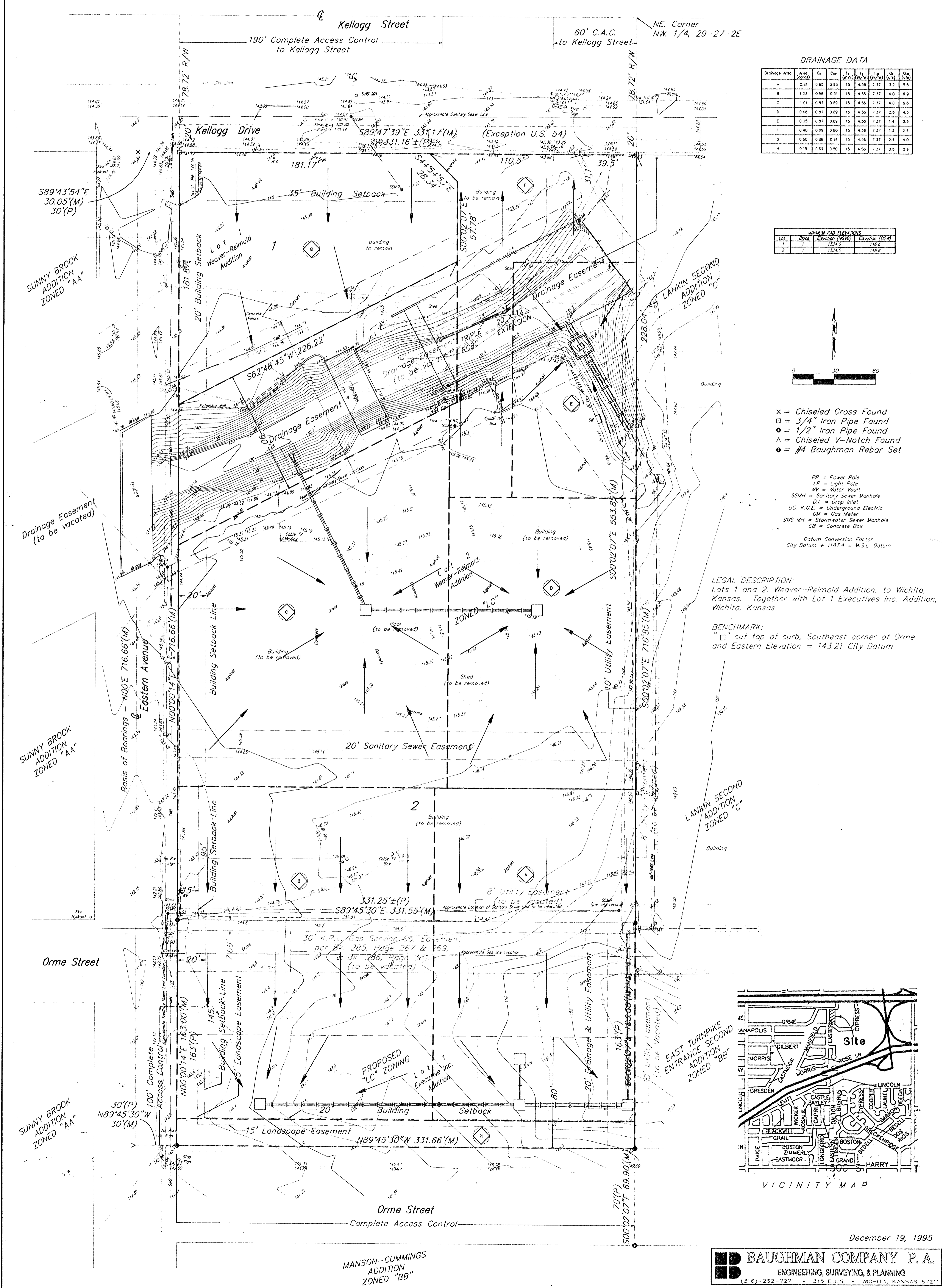


DRAINAGE CONCEPT

CIRCUIT CITY ADDITION

WICHITA, SEDGWICK COUNTY, KANSAS

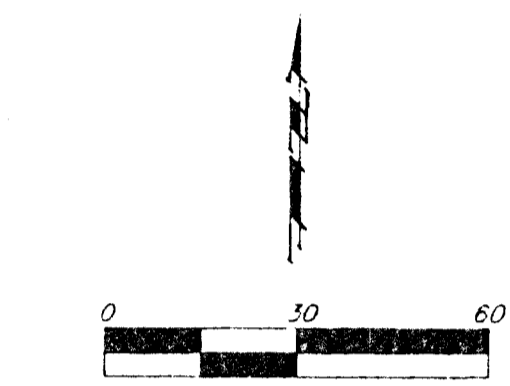


DRAINAGE DATA

Drainage Area	Area (Acres)	C ₁	C ₂	T ₁	T ₂	T ₃	T ₄	T ₅	Q ₁₀₀ (CFS)	Q ₅₀ (CFS)	Q ₂₅ (CFS)
A	0.81	0.85	0.43	15	4.56	7.37	32	5.8			
B	1.02	0.58	0.31	15	4.56	7.37	40	8.9			
C	1.01	0.87	0.39	15	4.56	7.37	40	8.8			
D	0.88	0.87	0.39	15	4.56	7.37	28	4.3			
E	0.35	0.87	0.39	15	4.56	7.37	14	2.3			
F	0.40	0.69	0.30	15	4.56	7.37	13	2.4			
G	0.80	0.96	0.31	15	4.56	7.37	24	4.0			
H	0.5	0.63	0.30	15	4.56	7.37	25	3.9			

WATER PIPING DATA

Lot	Block	Location (N20W)	Elevation (City Datum)
1	1	1214.0	748.6
2	1	1214.0	748.6

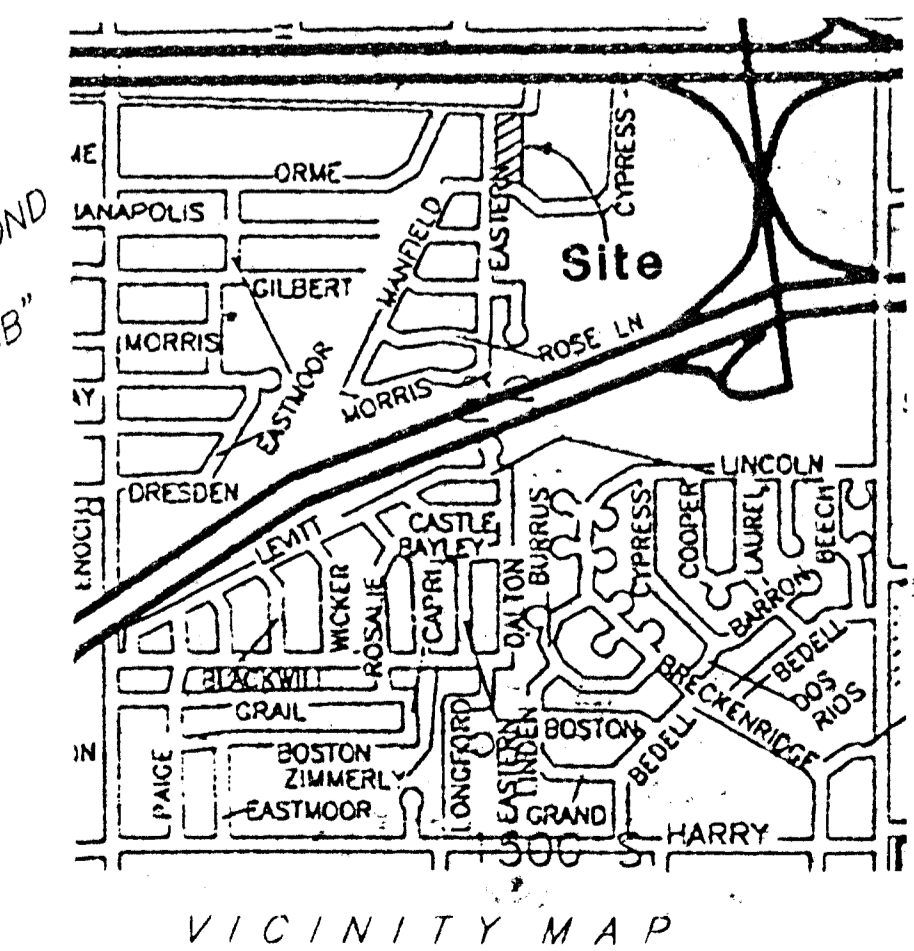


- x = Chiseled Cross Found
- = 3/4" Iron Pipe Found
- = 1/2" Iron Pipe Found
- △ = Chiseled V-Notch Found
- = #4 Baughman Rebar Set

- PP = Power Pole
 - LP = Light Pole
 - WP = Water Vault
 - SSM = Sanitary Sewer Manhole
 - DI = Drop Inlet
 - UG. K.E. = Underground Electric
 - GM = Gas Meter
 - SWS MH = Stormwater Sewer Manhole
 - CB = Concrete Box
- Datum Conversion Factor
City Datum + 1187.4 = M.S.L. Datum

LEGAL DESCRIPTION:
Lots 1 and 2, Weaver-Reimold Addition, to Wichita, Kansas, Together with Lot 1 Executives Inc. Addition, Wichita, Kansas

BENCHMARK:
□ cut top of curb, Southeast corner of Orme and Eastern Elevation = 143.21 City Datum



December 19, 1995