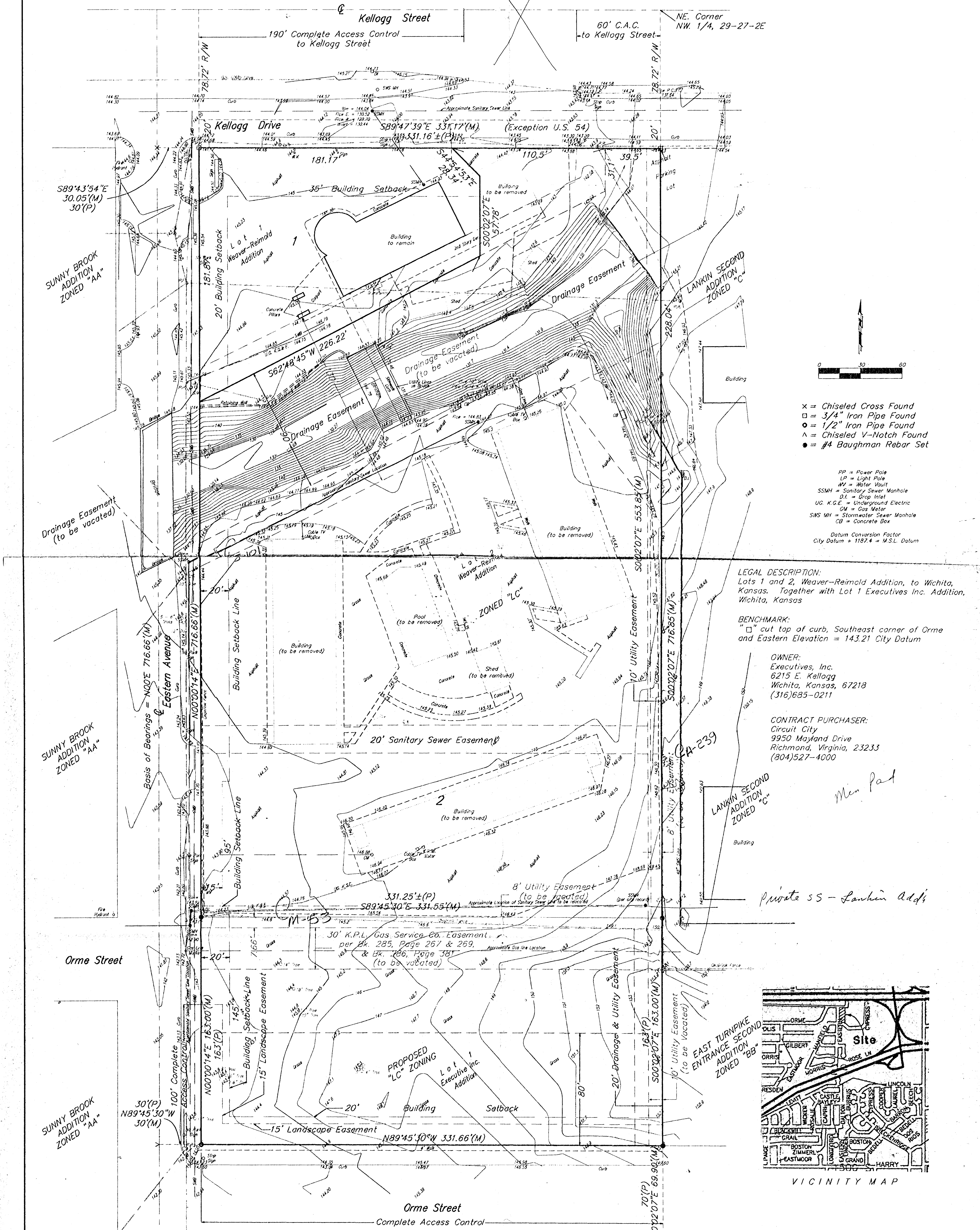


PRELIMINARY PLAT
CIRCUIT CITY ADDITION
 WICHITA, SEDGWICK COUNTY, KANSAS



- x = Chiseled Cross Found
- = 3/4" Iron Pipe Found
- = 1/2" Iron Pipe Found
- △ = Chiseled V-Notch Found
- = #4 Baughman Rebar Set

PP = Power Pole
 LP = Light Pole
 MV = Meter Vault
 SSMH = Sanitary Sewer Manhole
 DI = Drop Inlet
 UG K.G.E. = Underground Electric
 GM = Gas Meter
 SWS MH = Stormwater Sewer Manhole
 CB = Concrete Box

Datum Conversion Factor
 City Datum = 1182.4 = M.S.L. Datum

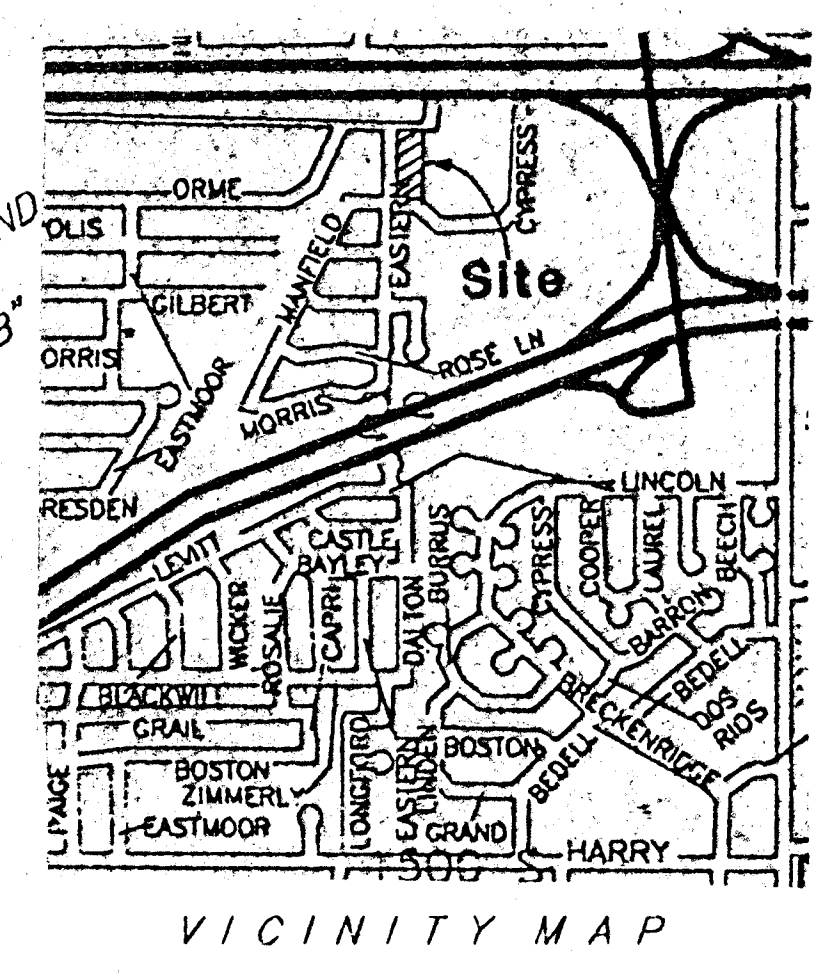
LEGAL DESCRIPTION:
 Lots 1 and 2, Weaver-Reimold Addition, to Wichita, Kansas. Together with Lot 1 Executives Inc. Addition, Wichita, Kansas

BENCHMARK:
 "□" cut top of curb, Southeast corner of Orme and Eastern Elevation = 143.21 City Datum

OWNER:
 Executives, Inc.
 6215 E. Kellogg
 Wichita, Kansas, 67218
 (316)685-0211

CONTRACT PURCHASER:
 Circuit City
 9950 Mayland Drive
 Richmond, Virginia, 23233
 (804)527-4000

private ss - Lanwin add



December 15, 1995

BAUGHMAN COMPANY P. A.
 ENGINEERING, SURVEYING, & PLANNING
 (316)-292-7271 • 315 ELLIS • WICHITA, KANSAS 67211

MANSON-CUMMINGS
 ADDITION
 ZONED "BB"