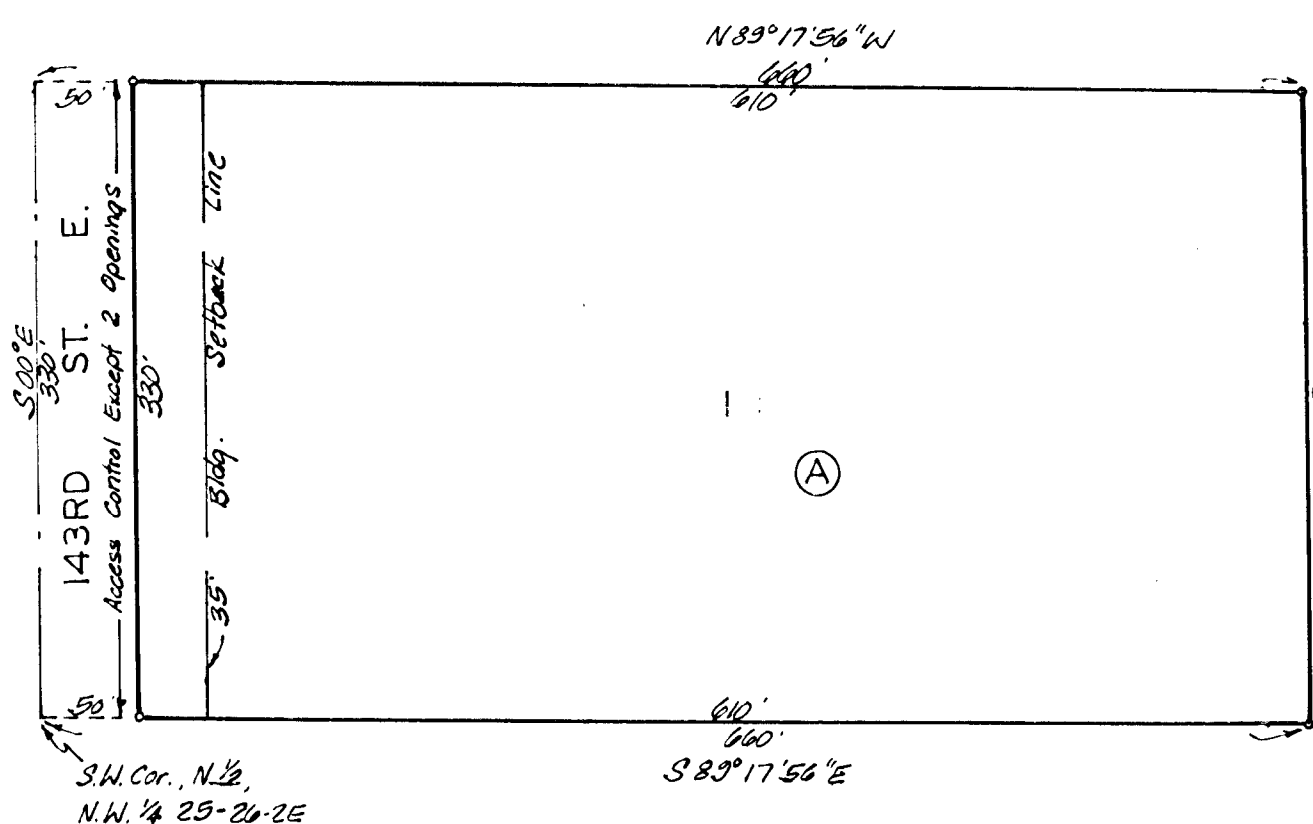


DAVID BORG ADDITION

SEDGWICK COUNTY, KANSAS



State of Kansas } ss. We, Baughman Company P.A.,
 Sedgwick County } Surveyors in aforesaid county and state do hereby
 certify that we have surveyed and platted "DAVID BORG
 ADDITION," Sedgwick County, Kansas, and that the
 accompanying plat is a true and correct exhibit of
 the property surveyed, described as beginning at the
 SW corner of the N 1/2 of the N.W. 1/4 of Sec. 25, Twp.
 24-S, R-2-E of the 4th P.M., Sedgwick County, Kansas;
 thence east along the south line of said N 1/2 a dis-
 tance of 400 feet; thence north parallel to the west
 line of said N.W. 1/4, a distance of 330 feet; thence
 west parallel to the south line of said N 1/2, a
 distance of 400 feet to the west line of said N.W. 1/4;
 thence south along said west line a distance of
 330 feet to the place of beginning.

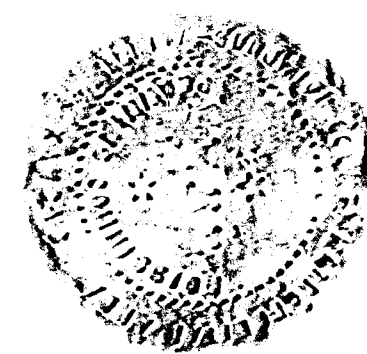
7/24/33
 Date

Baughman Company, P.A.

William L. Koebe Surveyor

This plat of "DAVID BORG ADDITION," Sedgwick County, Kansas, has been submitted to and approved by the Wichita-Sedgwick County Metropolitan Area Planning Commission, Wichita, Kansas. Dated this 30th day of June 1933.

Wichita-Sedgwick County Metropolitan Area Planning Commission



David Bayouff Chairman
Robert A. Lakin Secretary

Know all men by these presents that we, the undersigned, have caused the land described in the surveyors certificate to be platted into a lot, block, and street to be known as "DAVID BORG ADDITION," Sedgwick County, Kansas. The street is hereby dedicated to and for the use of the public. All scuttlers rights of access to or from 143rd St. E. over and across the west line of Lot 1 are hereby granted to the appropriate governing body; provided however that Lot 1 shall have access to 143rd St. E. at 2 points as shall be determined by the appropriate governing body.

David L. Borg Diane E. Borg
 David L. Borg Diane E. Borg

This plat approved and all dedications shown hereon accepted by the Board of Commissioners of the City of Wichita, Kansas, this 1st day of August 1933.

Margaret Wright Mayor
Donald C. Givick City Clerk

State of Kansas } ss. The foregoing instrument was
 Sedgwick County } acknowledged before me this 24th day of July
 1933, by David L. Borg and Diane E. Borg, his
 wife.

Notary Public
 My App. Exp. 5-13-35

This plat approved and all dedications shown hereon accepted by the Board of Commissioners of Sedgwick County, Kansas, this day of 1933.

Jack Spritt Chairman
Donald E. Gage Commissioner
Tom Scott Commissioner
Dorothy K. White County Clerk

State of Kansas } ss. This is to certify that this
 Sedgwick County } plat has been filed for record in the office of
 the Register of Deeds this day of
 1933, at o'clock M; and is duly re-
 corded.

Bette F. McCart Register of Deeds
Pat Kettler Deputy

Entered on transfer record this day of 1933.

Dorothy K. White County Clerk