

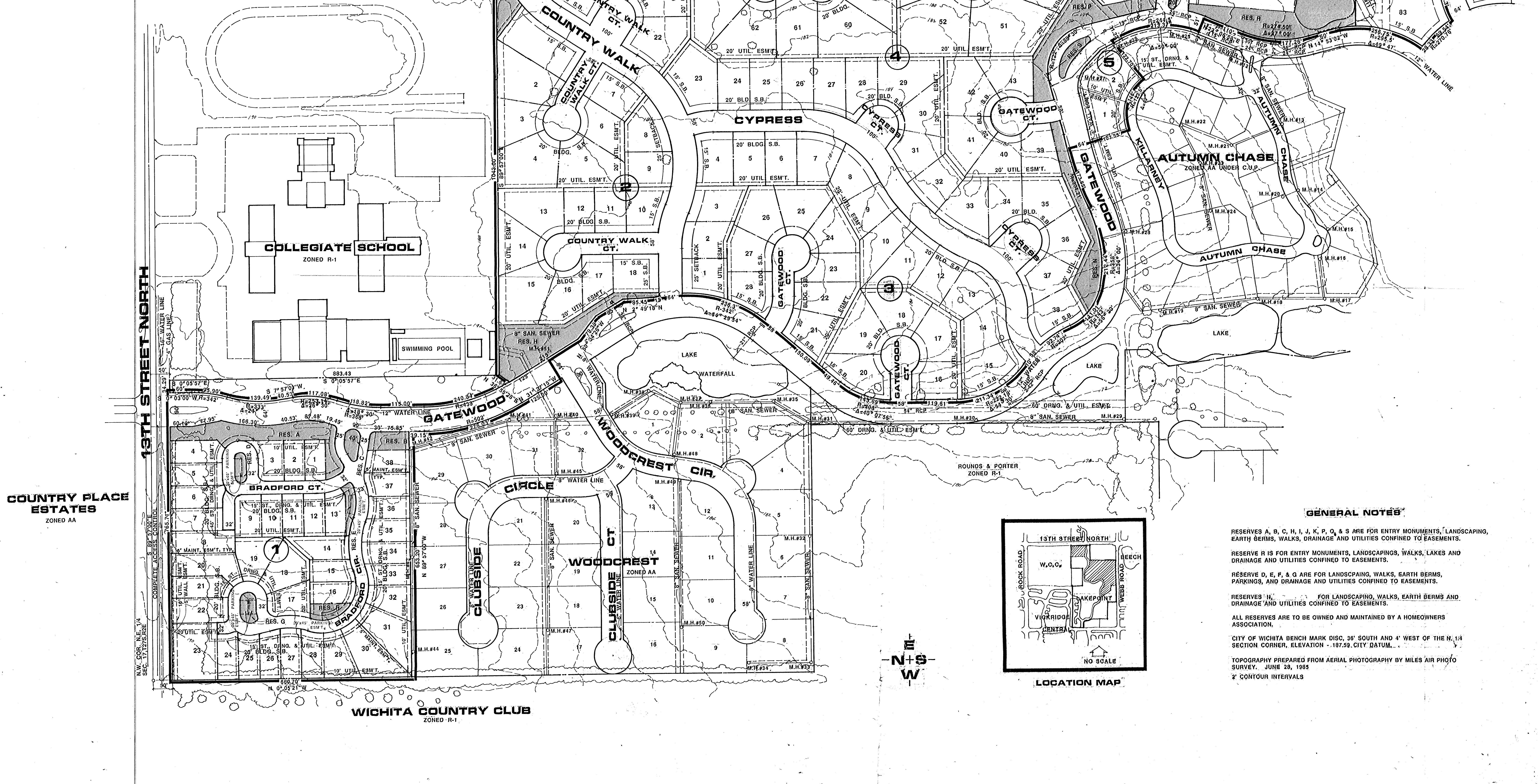
BEECH LAKE
ZONED E. LIGHT INDUSTRIAL

WEBB ROAD
COMPLETE ACCESS CONTROL

S.E. COR. N.B. 114
SEC. 17, T28N, R2E

SANITARY SEWER INFORMATION

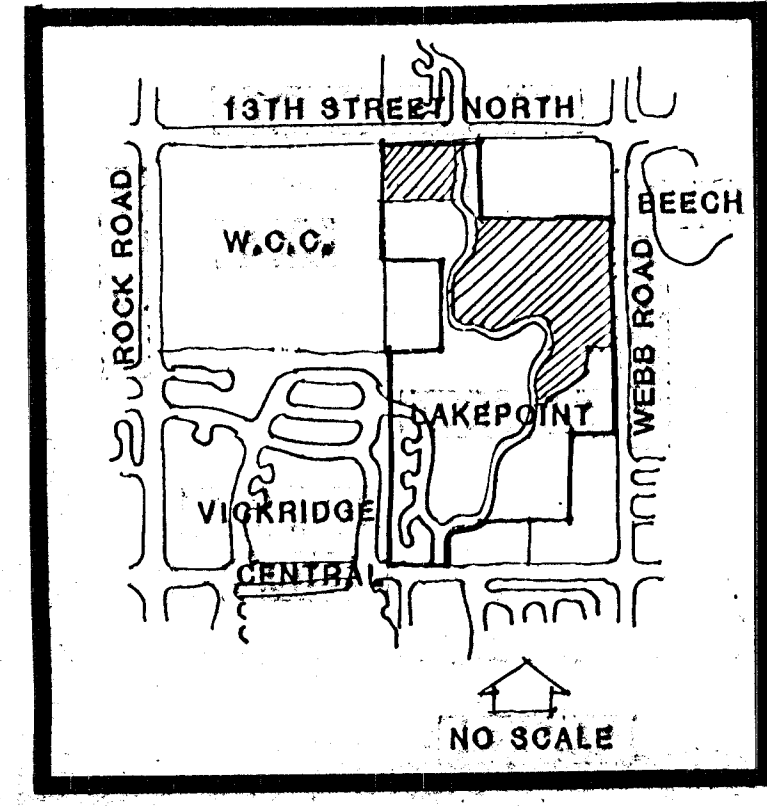
M.H.#1 - TOP - 100.7 F.L. IN - 102.00 F.L. OUT - 108.00	M.H.#20 - TOP - 107.0 F.L. IN - 108.50 F.L. OUT - 115.00	M.H.#39 - TOP - 108.8 F.L. IN - 110.37 F.L. OUT - 117.97
M.H.#3 - TOP - 105.4 F.L. IN - 106.77 F.L. OUT - 112.77	M.H.#21 - TOP - 112.0 F.L. IN - 113.50 F.L. OUT - 120.00	M.H.#40 - TOP - 109.4 F.L. IN - 110.87 F.L. OUT - 117.47
M.H.#5 - TOP - 107.7 F.L. IN - 109.07 F.L. OUT - 115.07	M.H.#22 - TOP - 113.0 F.L. IN - 114.50 F.L. OUT - 121.00	M.H.#41 - TOP - 108.9 F.L. IN - 110.37 F.L. OUT - 116.97
M.H.#6 - TOP - 108.0 F.L. IN - 109.30 F.L. OUT - 115.30	M.H.#23 - TOP - 113.5 F.L. IN - 115.00 F.L. OUT - 122.00	M.H.#42 - TOP - 108.4 F.L. IN - 109.87 F.L. OUT - 115.87
M.H.#7 - TOP - 108.3 F.L. IN - 109.63 F.L. OUT - 115.63	M.H.#24 - TOP - 114.0 F.L. IN - 115.50 F.L. OUT - 123.00	M.H.#43 - TOP - 107.9 F.L. IN - 109.37 F.L. OUT - 114.87
M.H.#8 - TOP - 108.6 F.L. IN - 109.93 F.L. OUT - 115.93	M.H.#25 - TOP - 114.5 F.L. IN - 116.00 F.L. OUT - 124.00	M.H.#44 - TOP - 107.4 F.L. IN - 108.87 F.L. OUT - 113.87
M.H.#9 - TOP - 108.9 F.L. IN - 110.23 F.L. OUT - 116.23	M.H.#26 - TOP - 115.0 F.L. IN - 116.50 F.L. OUT - 125.00	M.H.#45 - TOP - 106.9 F.L. IN - 108.37 F.L. OUT - 112.87
M.H.#10 - TOP - 109.2 F.L. IN - 110.53 F.L. OUT - 116.53	M.H.#27 - TOP - 115.5 F.L. IN - 117.00 F.L. OUT - 126.00	M.H.#46 - TOP - 106.4 F.L. IN - 107.87 F.L. OUT - 111.87
M.H.#11 - TOP - 109.5 F.L. IN - 110.83 F.L. OUT - 116.83	M.H.#28 - TOP - 116.0 F.L. IN - 117.50 F.L. OUT - 127.00	M.H.#47 - TOP - 105.9 F.L. IN - 107.37 F.L. OUT - 110.87
M.H.#12 - TOP - 109.8 F.L. IN - 111.13 F.L. OUT - 117.13	M.H.#29 - TOP - 116.5 F.L. IN - 118.00 F.L. OUT - 128.00	M.H.#48 - TOP - 105.4 F.L. IN - 106.87 F.L. OUT - 109.87
M.H.#13 - TOP - 110.1 F.L. IN - 111.43 F.L. OUT - 117.43	M.H.#30 - TOP - 117.0 F.L. IN - 118.50 F.L. OUT - 129.00	M.H.#49 - TOP - 104.9 F.L. IN - 106.37 F.L. OUT - 108.87
M.H.#14 - TOP - 110.4 F.L. IN - 111.73 F.L. OUT - 117.73	M.H.#31 - TOP - 117.5 F.L. IN - 119.00 F.L. OUT - 130.00	M.H.#50 - TOP - 104.4 F.L. IN - 105.87 F.L. OUT - 107.87
M.H.#15 - TOP - 110.7 F.L. IN - 112.03 F.L. OUT - 118.03	M.H.#32 - TOP - 118.0 F.L. IN - 119.50 F.L. OUT - 131.00	M.H.#51 - TOP - 103.9 F.L. IN - 105.37 F.L. OUT - 106.87
M.H.#16 - TOP - 111.0 F.L. IN - 112.33 F.L. OUT - 118.33	M.H.#33 - TOP - 118.5 F.L. IN - 120.00 F.L. OUT - 132.00	
M.H.#17 - TOP - 111.3 F.L. IN - 112.63 F.L. OUT - 118.63		
M.H.#18 - TOP - 111.6 F.L. IN - 112.93 F.L. OUT - 118.93		
M.H.#19 - TOP - 111.9 F.L. IN - 113.23 F.L. OUT - 119.23		



COUNTRY PLACE ESTATES
ZONED AA

COLLEGIATE SCHOOL
ZONED R-1

WICHITA COUNTRY CLUB
ZONED R-1



GENERAL NOTES

- RESERVES A, B, C, H, I, J, K, P, Q, & S ARE FOR ENTRY MONUMENTS, LANDSCAPING, EARTH BERMS, WALKS, DRAINAGE AND UTILITIES CONFINED TO EASEMENTS.
- RESERVE R IS FOR ENTRY MONUMENTS, LANDSCAPING, WALKS, LAKES AND DRAINAGE AND UTILITIES CONFINED TO EASEMENTS.
- RESERVE D, E, F, & G ARE FOR LANDSCAPING, WALKS, EARTH BERMS, PARKINGS, AND DRAINAGE AND UTILITIES CONFINED TO EASEMENTS.
- RESERVES N, O, & P ARE FOR LANDSCAPING, WALKS, EARTH BERMS AND DRAINAGE AND UTILITIES CONFINED TO EASEMENTS.
- ALL RESERVES ARE TO BE OWNED AND MAINTAINED BY A HOMEOWNERS ASSOCIATION.
- CITY OF WICHITA BENCH MARK DISC, 36" SOUTH AND 4" WEST OF THE N. 1/4 SECTION CORNER, ELEVATION - 187.59 CITY DATUM.
- TOPOGRAPHY PREPARED FROM AERIAL PHOTOGRAPHY BY MILES AIR PHOTO SURVEY, JUNE 28, 1985
- 2' CONTOUR INTERVALS

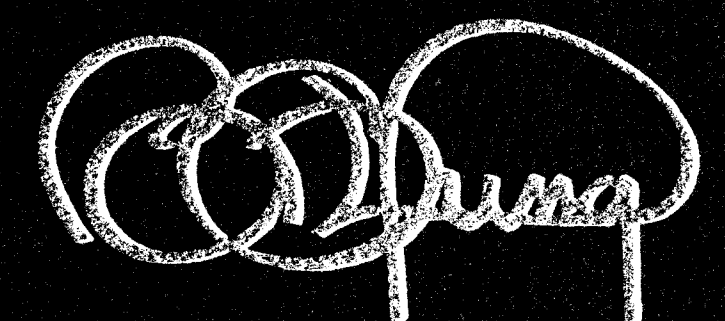
PRELIMINARY PLAT (REPLAT OF A PORTION OF GATEWOOD SECOND AND AUTUMN CHASE ADDITIONS)

COUNTRY WALK

DATE: AUG 21, 1987

OWNER: BUREAU OF LAND MANAGEMENT, U.S. DEPARTMENT OF AGRICULTURE, WICHITA, KANSAS 67234

ENGINEER: PROFESSIONAL ENGINEERING CONSULTANTS, P.A., P.C., ENGLISH WICHITA, KANSAS 67211



BILL G. YUNG DESIGN
117 E. 29TH STREET NORTH WICHITA, KS 67220