

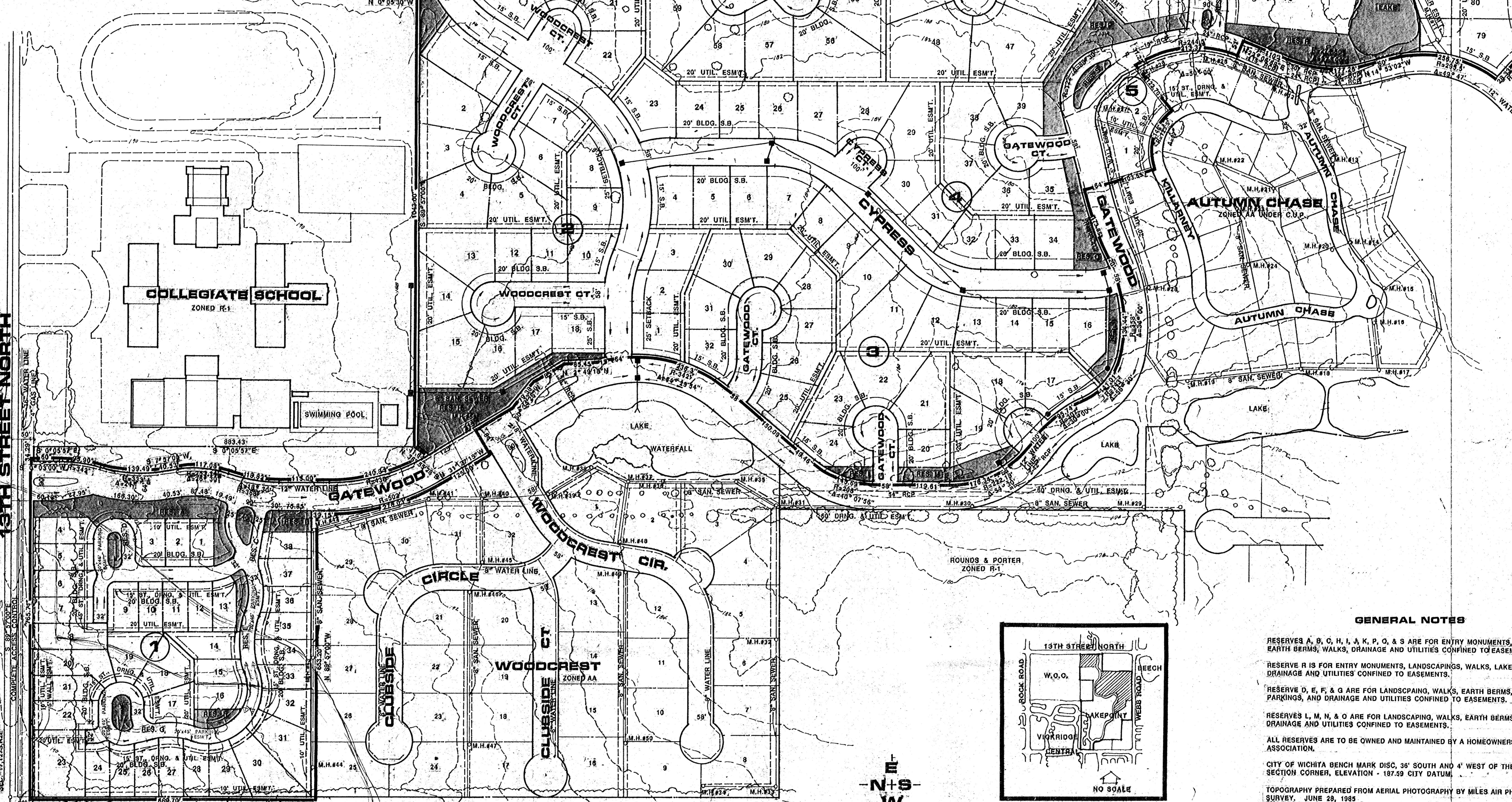
BEECH LAKE  
ZONED B. LIGHT INDUSTRIAL

WEBB ROAD  
COMPLETE ACCESS CONTROL

S.E. COR. N.E. 1/4  
SEC. 17, T.17S, R.2E

**SANITARY SEWER INFORMATION**

M.H.#11	TOP - 109.7	M.H.#20	TOP - 112.1	M.H.#29	TOP - 109.3
M.H.#12	TOP - 107.8	M.H.#21	TOP - 110.5	M.H.#30	TOP - 107.7
M.H.#13	TOP - 105.9	M.H.#22	TOP - 108.9	M.H.#31	TOP - 106.1
M.H.#14	TOP - 104.0	M.H.#23	TOP - 107.3	M.H.#32	TOP - 104.5
M.H.#15	TOP - 102.1	M.H.#24	TOP - 105.7	M.H.#33	TOP - 102.9
M.H.#16	TOP - 100.2	M.H.#25	TOP - 104.1	M.H.#34	TOP - 101.3
M.H.#17	TOP - 98.3	M.H.#26	TOP - 102.5	M.H.#35	TOP - 99.7
M.H.#18	TOP - 96.4	M.H.#27	TOP - 100.9	M.H.#36	TOP - 98.1
M.H.#19	TOP - 94.5	M.H.#28	TOP - 99.3	M.H.#37	TOP - 96.5
M.H.#20	TOP - 92.6	M.H.#29	TOP - 97.7	M.H.#38	TOP - 94.9
M.H.#21	TOP - 90.7	M.H.#30	TOP - 96.1	M.H.#39	TOP - 93.3
M.H.#22	TOP - 88.8	M.H.#31	TOP - 94.5	M.H.#40	TOP - 91.7
M.H.#23	TOP - 86.9	M.H.#32	TOP - 92.9	M.H.#41	TOP - 90.1
M.H.#24	TOP - 85.0	M.H.#33	TOP - 91.3	M.H.#42	TOP - 88.5
M.H.#25	TOP - 83.1	M.H.#34	TOP - 89.7	M.H.#43	TOP - 86.9
M.H.#26	TOP - 81.2	M.H.#35	TOP - 88.1	M.H.#44	TOP - 85.3
M.H.#27	TOP - 79.3	M.H.#36	TOP - 86.5	M.H.#45	TOP - 83.7
M.H.#28	TOP - 77.4	M.H.#37	TOP - 84.9	M.H.#46	TOP - 82.1
M.H.#29	TOP - 75.5	M.H.#38	TOP - 83.3	M.H.#47	TOP - 80.5
M.H.#30	TOP - 73.6	M.H.#39	TOP - 81.7	M.H.#48	TOP - 78.9
M.H.#31	TOP - 71.7	M.H.#40	TOP - 80.1	M.H.#49	TOP - 77.3
M.H.#32	TOP - 69.8	M.H.#41	TOP - 78.5	M.H.#50	TOP - 75.7
M.H.#33	TOP - 67.9	M.H.#42	TOP - 76.9	M.H.#51	TOP - 74.1
M.H.#34	TOP - 66.0	M.H.#43	TOP - 75.3	M.H.#52	TOP - 72.5
M.H.#35	TOP - 64.1	M.H.#44	TOP - 73.7	M.H.#53	TOP - 70.9
M.H.#36	TOP - 62.2	M.H.#45	TOP - 72.1	M.H.#54	TOP - 69.3
M.H.#37	TOP - 60.3	M.H.#46	TOP - 70.5	M.H.#55	TOP - 67.7
M.H.#38	TOP - 58.4	M.H.#47	TOP - 68.9	M.H.#56	TOP - 66.1
M.H.#39	TOP - 56.5	M.H.#48	TOP - 67.3	M.H.#57	TOP - 64.5
M.H.#40	TOP - 54.6	M.H.#49	TOP - 65.7	M.H.#58	TOP - 62.9
M.H.#41	TOP - 52.7	M.H.#50	TOP - 64.1	M.H.#59	TOP - 61.3
M.H.#42	TOP - 50.8	M.H.#51	TOP - 62.5	M.H.#60	TOP - 59.7
M.H.#43	TOP - 48.9	M.H.#52	TOP - 60.9	M.H.#61	TOP - 58.1
M.H.#44	TOP - 47.0	M.H.#53	TOP - 59.3	M.H.#62	TOP - 56.5
M.H.#45	TOP - 45.1	M.H.#54	TOP - 57.7	M.H.#63	TOP - 54.9
M.H.#46	TOP - 43.2	M.H.#55	TOP - 56.1	M.H.#64	TOP - 53.3
M.H.#47	TOP - 41.3	M.H.#56	TOP - 54.5	M.H.#65	TOP - 51.7
M.H.#48	TOP - 39.4	M.H.#57	TOP - 52.9	M.H.#66	TOP - 50.1
M.H.#49	TOP - 37.5	M.H.#58	TOP - 51.3	M.H.#67	TOP - 48.5
M.H.#50	TOP - 35.6	M.H.#59	TOP - 49.7	M.H.#68	TOP - 46.9
M.H.#51	TOP - 33.7	M.H.#60	TOP - 48.1	M.H.#69	TOP - 45.3
M.H.#52	TOP - 31.8	M.H.#61	TOP - 46.5	M.H.#70	TOP - 43.7
M.H.#53	TOP - 29.9	M.H.#62	TOP - 44.9	M.H.#71	TOP - 42.1
M.H.#54	TOP - 28.0	M.H.#63	TOP - 43.3	M.H.#72	TOP - 40.5
M.H.#55	TOP - 26.1	M.H.#64	TOP - 41.7	M.H.#73	TOP - 38.9
M.H.#56	TOP - 24.2	M.H.#65	TOP - 40.1	M.H.#74	TOP - 37.3
M.H.#57	TOP - 22.3	M.H.#66	TOP - 38.5	M.H.#75	TOP - 35.7
M.H.#58	TOP - 20.4	M.H.#67	TOP - 36.9	M.H.#76	TOP - 34.1
M.H.#59	TOP - 18.5	M.H.#68	TOP - 35.3	M.H.#77	TOP - 32.5
M.H.#60	TOP - 16.6	M.H.#69	TOP - 33.7	M.H.#78	TOP - 30.9
M.H.#61	TOP - 14.7	M.H.#70	TOP - 32.1	M.H.#79	TOP - 29.3
M.H.#62	TOP - 12.8	M.H.#71	TOP - 30.5	M.H.#80	TOP - 27.7
M.H.#63	TOP - 10.9	M.H.#72	TOP - 28.9	M.H.#81	TOP - 26.1
M.H.#64	TOP - 9.0	M.H.#73	TOP - 27.3	M.H.#82	TOP - 24.5
M.H.#65	TOP - 7.1	M.H.#74	TOP - 25.7	M.H.#83	TOP - 22.9
M.H.#66	TOP - 5.2	M.H.#75	TOP - 24.1	M.H.#84	TOP - 21.3
M.H.#67	TOP - 3.3	M.H.#76	TOP - 22.5	M.H.#85	TOP - 19.7
M.H.#68	TOP - 1.4	M.H.#77	TOP - 20.9	M.H.#86	TOP - 18.1
M.H.#69	TOP - 0.5	M.H.#78	TOP - 19.3	M.H.#87	TOP - 16.5
M.H.#70	TOP - 0.0	M.H.#79	TOP - 17.7	M.H.#88	TOP - 14.9
M.H.#71	TOP - 0.0	M.H.#80	TOP - 16.1	M.H.#89	TOP - 13.3
M.H.#72	TOP - 0.0	M.H.#81	TOP - 14.5	M.H.#90	TOP - 11.7
M.H.#73	TOP - 0.0	M.H.#82	TOP - 12.9	M.H.#91	TOP - 10.1
M.H.#74	TOP - 0.0	M.H.#83	TOP - 11.3	M.H.#92	TOP - 8.5
M.H.#75	TOP - 0.0	M.H.#84	TOP - 9.7	M.H.#93	TOP - 6.9
M.H.#76	TOP - 0.0	M.H.#85	TOP - 8.1	M.H.#94	TOP - 5.3
M.H.#77	TOP - 0.0	M.H.#86	TOP - 6.5	M.H.#95	TOP - 3.7
M.H.#78	TOP - 0.0	M.H.#87	TOP - 4.9	M.H.#96	TOP - 2.1
M.H.#79	TOP - 0.0	M.H.#88	TOP - 3.3	M.H.#97	TOP - 0.5
M.H.#80	TOP - 0.0	M.H.#89	TOP - 1.7	M.H.#98	TOP - 0.0
M.H.#81	TOP - 0.0	M.H.#90	TOP - 0.1	M.H.#99	TOP - 0.0
M.H.#82	TOP - 0.0	M.H.#91	TOP - 0.0	M.H.#100	TOP - 0.0

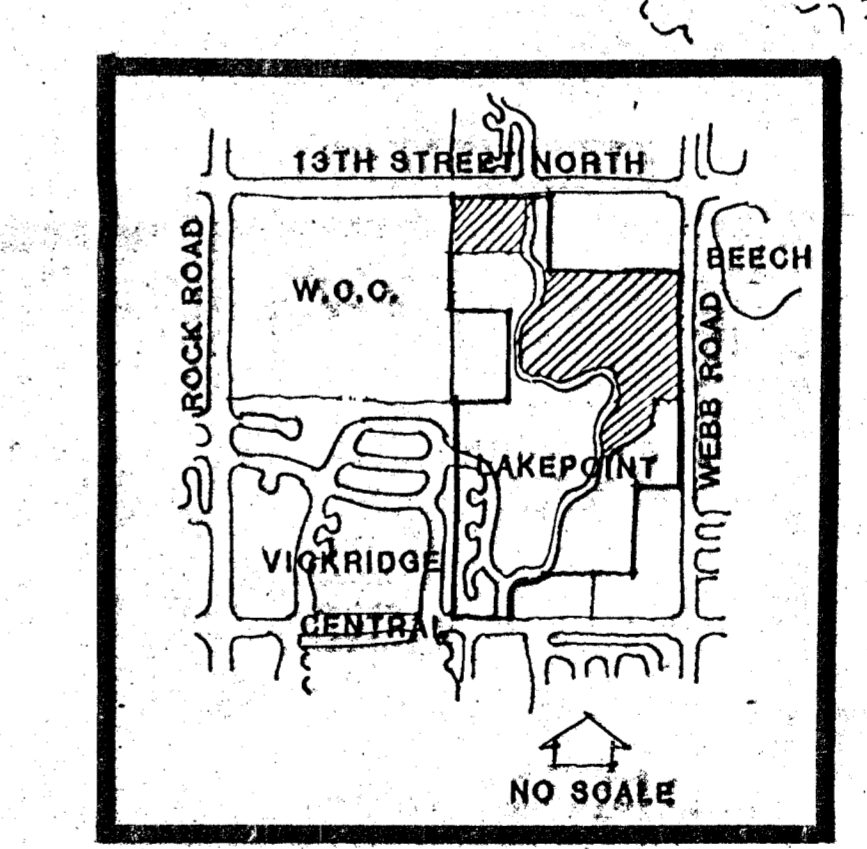


**13TH STREET NORTH**  
ZONED AA

**COUNTRY PLACE ESTATES**  
ZONED AA

**COLLEGIATE SCHOOL**  
ZONED R-1

**WICHITA COUNTRY CLUB**  
ZONED R-1



LOCATION MAP

**GENERAL NOTES**

- RESERVES A, B, C, H, I, J, K, P, O, & S ARE FOR ENTRY MONUMENTS, LANDSCAPING, EARTH BERMS, WALKS, DRAINAGE AND UTILITIES CONFINED TO EASEMENTS.
- RESERVE R IS FOR ENTRY MONUMENTS, LANDSCAPING, WALKS, LAKES AND DRAINAGE AND UTILITIES CONFINED TO EASEMENTS.
- RESERVE D, E, F, & G ARE FOR LANDSCAPING, WALKS, EARTH BERMS, PARKINGS, AND DRAINAGE AND UTILITIES CONFINED TO EASEMENTS.
- RESERVES L, M, N, & O ARE FOR LANDSCAPING, WALKS, EARTH BERMS AND DRAINAGE AND UTILITIES CONFINED TO EASEMENTS.
- ALL RESERVES ARE TO BE OWNED AND MAINTAINED BY A HOMEOWNERS ASSOCIATION.
- CITY OF WICHITA BENCH MARK DISC. 36' SOUTH AND 4' WEST OF THE N. 1/4 SECTION CORNER, ELEVATION - 187.59 CITY DATUM
- TOPOGRAPHY PREPARED FROM AERIAL PHOTOGRAPHY BY MILES AIR PHOTO SURVEY, JUNE 28, 1985
- 2' CONTOUR INTERVALS

- LEGEND**
- Inlets & Storm Drain
  - Drainage Direction - Minor Storm

DRAINAGE CONCEPT (REPLAT OF A PORTION OF GATEWOOD SECOND AND AUTUMN CHASE ADDITIONS)

# COUNTRY WALK