

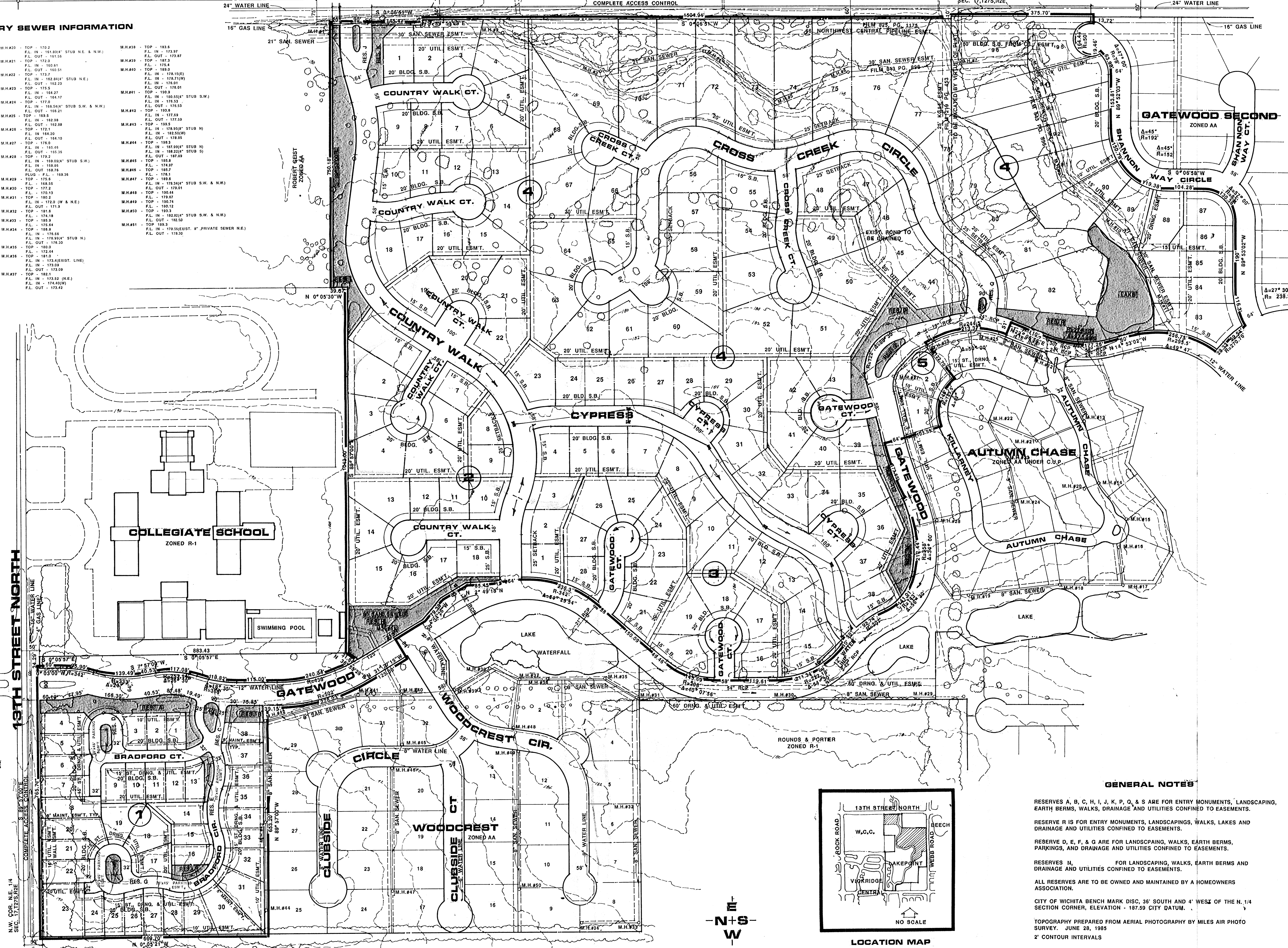
ZONED E. LIGHT INDUSTRIAL

WEBB ROAD COMPLETE ACCESS CONTROL

S.E. COR. N.E. 1/4 SEC. 17, T23, R2E

SANITARY SEWER INFORMATION

Table with columns for manhole ID (M.H.#), top elevation (TOP), and flow line information (F.L. IN, F.L. OUT, F.L. IN - F.L. OUT). Includes manholes M.H.#1 through M.H.#49.



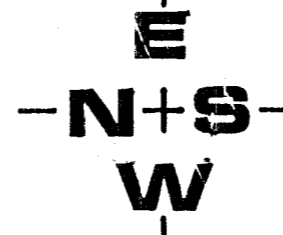
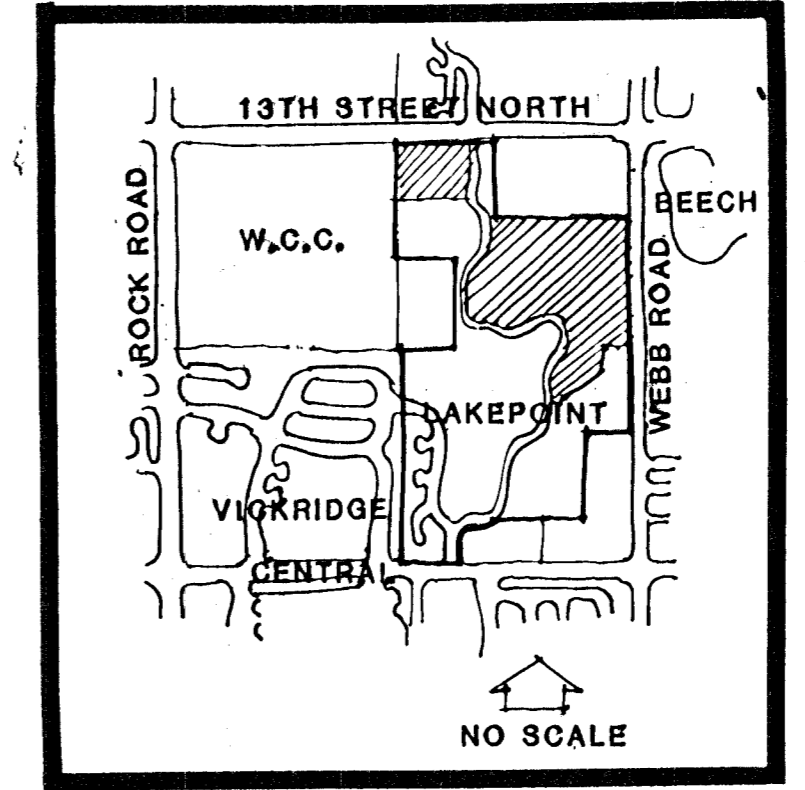
COUNTRY PLACE ESTATES ZONED AA

COLLEGIATE SCHOOL ZONED R-1

WICHITA COUNTRY CLUB ZONED R-1

GENERAL NOTES

- RESERVES A, B, C, H, I, J, K, P, O, & S ARE FOR ENTRY MONUMENTS, LANDSCAPING, EARTH BERMS, WALKS, DRAINAGE AND UTILITIES CONFINED TO EASEMENTS.
RESERVE R IS FOR ENTRY MONUMENTS, LANDSCAPING, WALKS, LAKES AND DRAINAGE AND UTILITIES CONFINED TO EASEMENTS.
RESERVE D, E, F, & G ARE FOR LANDSCAPING, WALKS, EARTH BERMS, PARKINGS, AND DRAINAGE AND UTILITIES CONFINED TO EASEMENTS.
RESERVES N, O, & P ARE FOR LANDSCAPING, WALKS, EARTH BERMS AND DRAINAGE AND UTILITIES CONFINED TO EASEMENTS.
ALL RESERVES ARE TO BE OWNED AND MAINTAINED BY A HOMEOWNERS ASSOCIATION.
CITY OF WICHITA BENCH MARK DISC, 36" SOUTH AND 4" WEST OF THE N. 1/4 SECTION CORNER, ELEVATION - 187.59 CITY DATUM.
TOPOGRAPHY PREPARED FROM AERIAL PHOTOGRAPHY BY MILES AIR PHOTO SURVEY, JUNE 28, 1985
2' CONTOUR INTERVALS



Revised Drainage Concept 9/30/1987