

YUNG DESIGN GROUP

BRANSON OFFICE: 1821 W. HIGHWAY 76, SUITE 77, BRANSON, MO 65616
WICHITA OFFICE: 4412 E. 39TH STREET, SUITE 200, WICHITA, KS 67220
PH: 316-685-9267 FAX: 316-685-9262

DATE FEBRUARY 14, 1994

REV.

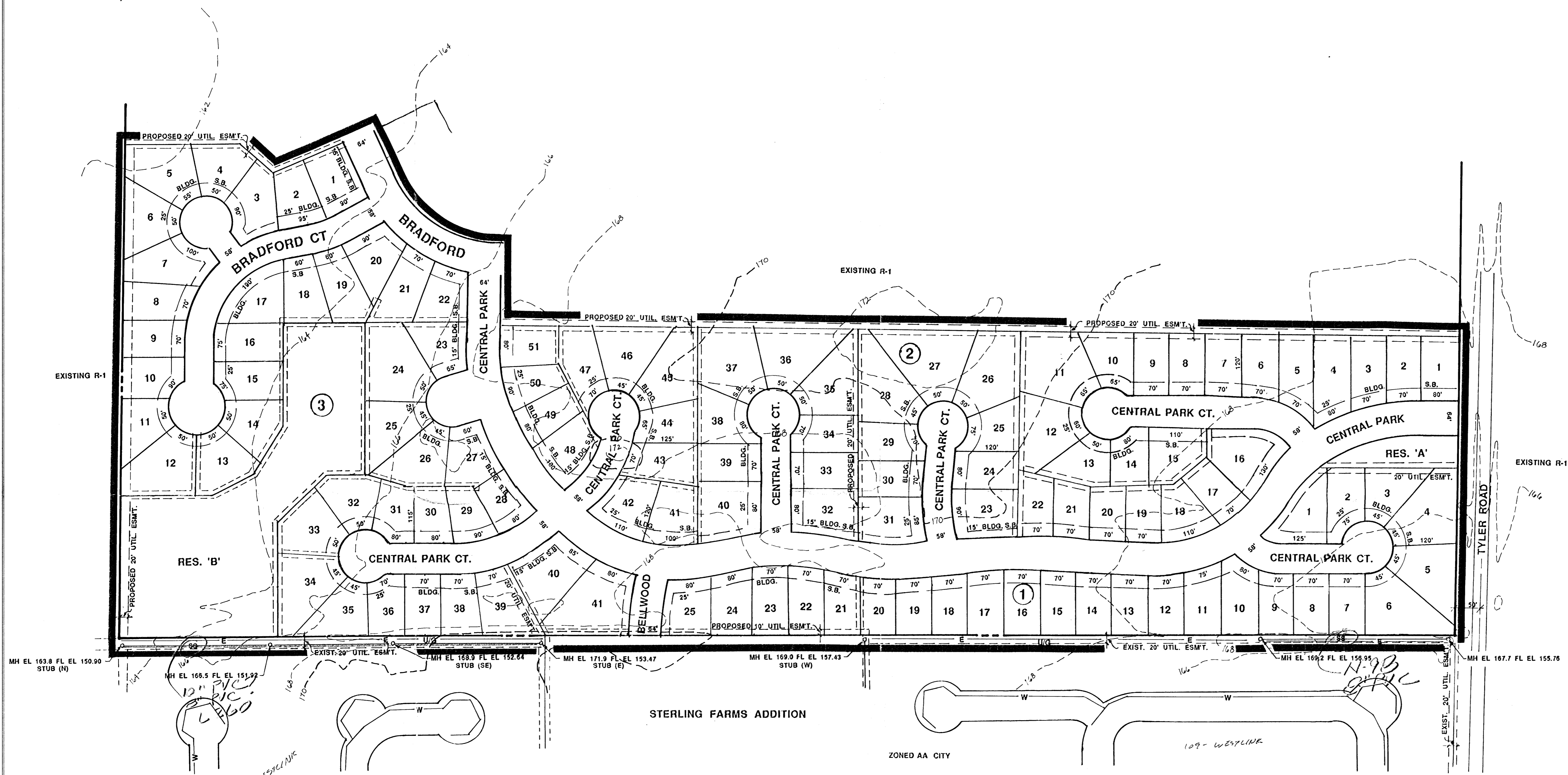
SHEET TITLE

PROJECT

PROJECT NO.

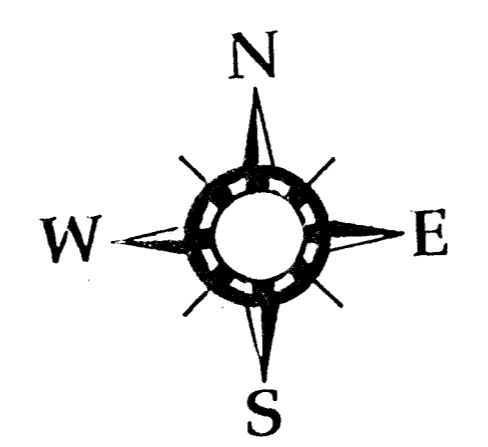
SHEET

OF



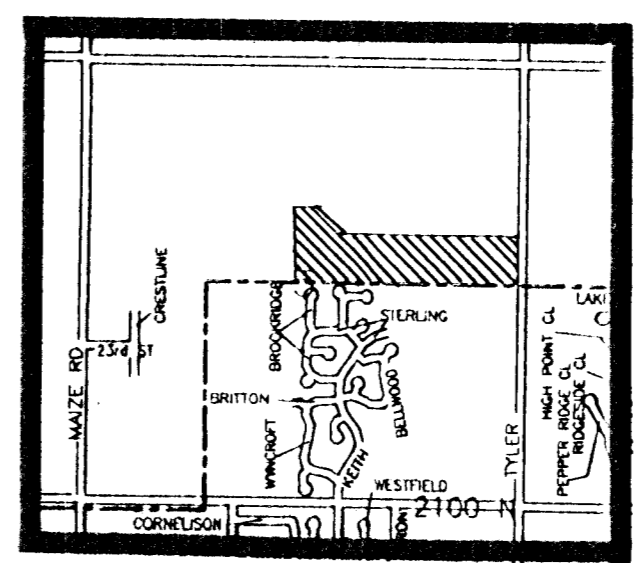
PELIMINARY PLAT BRADFORD SOUTH

OWNER: MESA HOMES INC. 221 S. BROADWAY #3 WICHITA, KANSAS 67202 PH: (316) 265-2555



SCALE: 1" = 100'
DATE: FEB. 11, 1994

- NOTES:**
1. A DRAINAGE CONCEPT FOR THIS PROJECT HAS BEEN PREPARED BY POE AND ASSOCIATES OF KANSAS, WICHITA, KS.
 2. ALL ENGINEERING REQUIREMENTS AND BENCH MARK INFORMATION FOR THIS PROJECT SHALL BE PREPARED BY POE AND ASSOCIATES OF KANSAS, WICHITA, KS.
 3. TOPOGRAPHY, NOVEMBER 1993, AT 2' CONTOUR INTERVALS, BY POE AND ASSOCIATES OF KANSAS, WICHITA, KS.
 4. RESERVES: RESERVE "A", AND "B" SHALL PERMIT ENTRANCE MONUMENTS, LIGHTING, LANDSCAPING, WALKWAYS, DRAINAGE / DRAINAGE STRUCTURES, FENCING, WALLS, IRRIGATION, AND UTILITIES CONFINED TO EASEMENTS.



LOCATION MAP
NO SCALE