

Brady Add'n.

BRADY ADDITION

SEDGWICK COUNTY, KANSAS.

This plat of "BRADY ADDITION," Sedgwick County, Kansas, has been submitted to and approved by the Wichita-Sedgwick County Metropolitan Area Planning Commission, Wichita, Kansas. Dated this 4th day of October, 1984.

Wichita-Sedgwick County Metropolitan Area Planning Commission
James H. Clark Chairman
Robert A. Cahn Secretary

This plat approved and all dedications shown hereon accepted by the Board of Commissioners of the City of Wichita, Kansas, this 1st day of NOV 1984.

Robert O. Knight Mayor
Donald C. Bickel City Clerk

This plat approved and all dedications shown hereon accepted by the Board of Commissioners of Sedgwick County, Kansas, this _____ day of _____ 1984.

Chairman

Commissioner

Commissioner

County Clerk

Entered on transfer record this _____ day of _____ 1984.

County Clerk

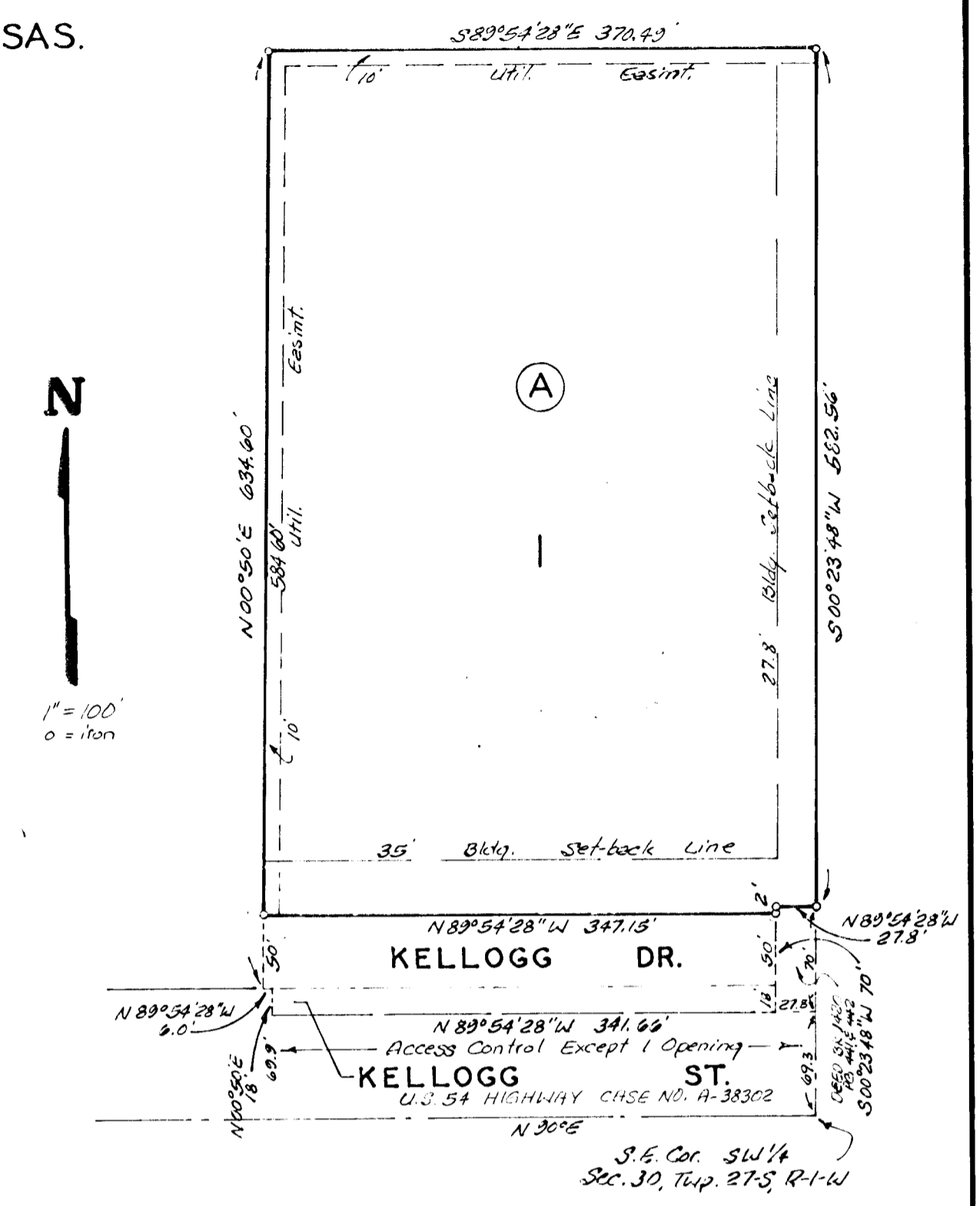
State of Kansas? ss. This is to certify that this plat has been filed for record in the office of the Register of Deeds this _____ day of _____ 1984 at _____ M; and is duly recorded.

Register of Deeds

Deputy

State of Kansas? ss. The foregoing instrument was acknowledged before me this _____ day of _____ 1984 by Catherine P. Brady, Co-Trustee and Joseph J. Brady, Co-Trustee of the Catherine P. Brady Trust, on behalf of the Trust, and of the Joseph J. Brady Trust on behalf of the Trust.

Notary Public
My Appt. Exp. _____



State of Kansas? ss. We, Baughman Company, P.A., Surveyors in aforesaid county and state do hereby certify that we have surveyed and platted "BRADY ADDITION," Sedgwick County, Kansas and that the accompanying plat is a true and correct exhibit of the property surveyed, described as beginning at the S.E. corner of the SW 1/4 of Sec. 30, Twp. 27-S, R-1-W of the 6th P.M. Sedgwick County, Kansas; thence west along the south line of said SW 1/4 376.60 feet; thence north parallel with the west line of said SW 1/4, to a point 334.00 feet north of the north right-of-way line of U.S. 54 Highway as established in condemnation Case No. A-38302; thence east parallel with the north line of said Highway right-of-way to the east line of said SW 1/4; thence south along the east line of said SW 1/4 to the place of beginning, except that part condemned for Highway in Case No. A-38302 and that part deeded for Highway in Deed Book 1420 at pages 441 and 442.

Date
Baughman Company, P.A.
William L. Korber Surveyor

Know all men by these presents that we, the undersigned, have caused the land described in the surveyors certificate to be platted into a Lot Block and Streets to be known as "BRADY ADDITION," Sedgwick County, Kansas. The easements are hereby granted as indicated for the construction and maintenance of all public utilities. The streets are hereby dedicated to and for the use of the public. All abutters rights of Access to or from Kellogg St. over and across the south line of Kellogg Dr. are hereby granted to the appropriate governing body provided however that Kellogg Dr. shall have Access to Kellogg St. at 1 point as shall be determined by the appropriate governing body.

Catherine P. Brady

Joseph J. Brady