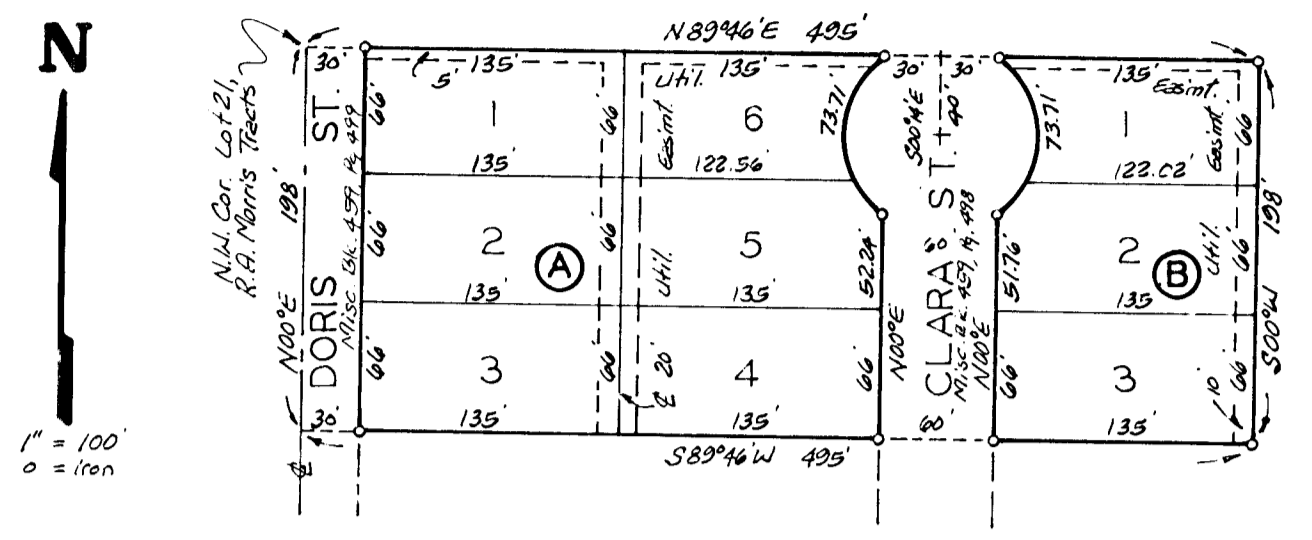


Bratcher add m.

BRATCHER ADDITION

WICHITA, KANSAS



This plat of "BRATCHER ADDITION,"
 Wichita, Kansas, has been submitted to and approved by
 the Wichita-Sedgewick County Metropolitan Area Planning
 Commission, Wichita, Kansas.
 Dated this 11th day of May, 1985.

Wichita-Sedgewick County Metropolitan Area Planning Commission.
 _____ Chairman
 _____ Secretary
 Robert A. Lakin

This plat approved and all dedicat-
 ions shown hereon accepted by the Board of Commission-
 ers of the City of Wichita, Kansas, this 11th day of
June, 1985.

_____ Mayor
 _____ City Clerk
 Donald C. Busick

State of Kansas }
 Sedgewick County } S.S. We, Baughman Company, P.A., Surveyors
 in aforesaid county and state do hereby certify that we
 have surveyed and platted "BRATCHER ADDITION," Wichita,
 Kansas and that the accompanying plat is a true and
 correct exhibit of the property surveyed, described as
 and being a replat of the north 108 feet of Lot 21, except
 the east 140 feet thereof, R.A. Morris Tracts, Sedgewick
 County, Kansas.

All being situated in the NW 1/4 of Sec. 14,
 Twp. 27-S, R-1-W of the 6th P.M., Sedgewick County,
 Kansas.
 Baughman Company, P.A.
 Date Mar 5, 1985
 _____ Surveyor
 Jean E. Lundquist

Know all men by these presents that we,
 the undersigned, have caused the land described in the
 surveyors certificate to be platted into lots, blocks and
 streets to be known as "BRATCHER ADDITION," Wichita,
 Kansas. The easements are hereby granted as indicated
 for the construction and maintenance of all public utilities.
 The streets are hereby dedicated to and for the use of
 the public.

_____ Ednie L. Vogel
 _____ Patricia A. Amburgey

Entered on transfer record this
 _____ day of _____, 1985.
 _____ County Clerk
 Don Wright

State of Kansas }
 Sedgewick County } S.S. This is to certify that this plat
 has been filed for record in the office of the Register
 of Deeds, this _____ day of _____, 1985, at
 o'clock _____ M; and is duly recorded.

_____ Register of Deeds
 _____ Deputy
 Ed Reed

State of Kansas }
 Sedgewick County } S.S. The foregoing instrument was acknowl-
 edged before this _____ day of _____, 1985, by
 Vernon F. Vogel and Ednie L. Vogel, his wife and by
 Jack R. Amburgey and Patricia A. Amburgey, his wife

My Appt. Exp. 12/24/1988
 _____ Notary Public
 Mark A. Seby