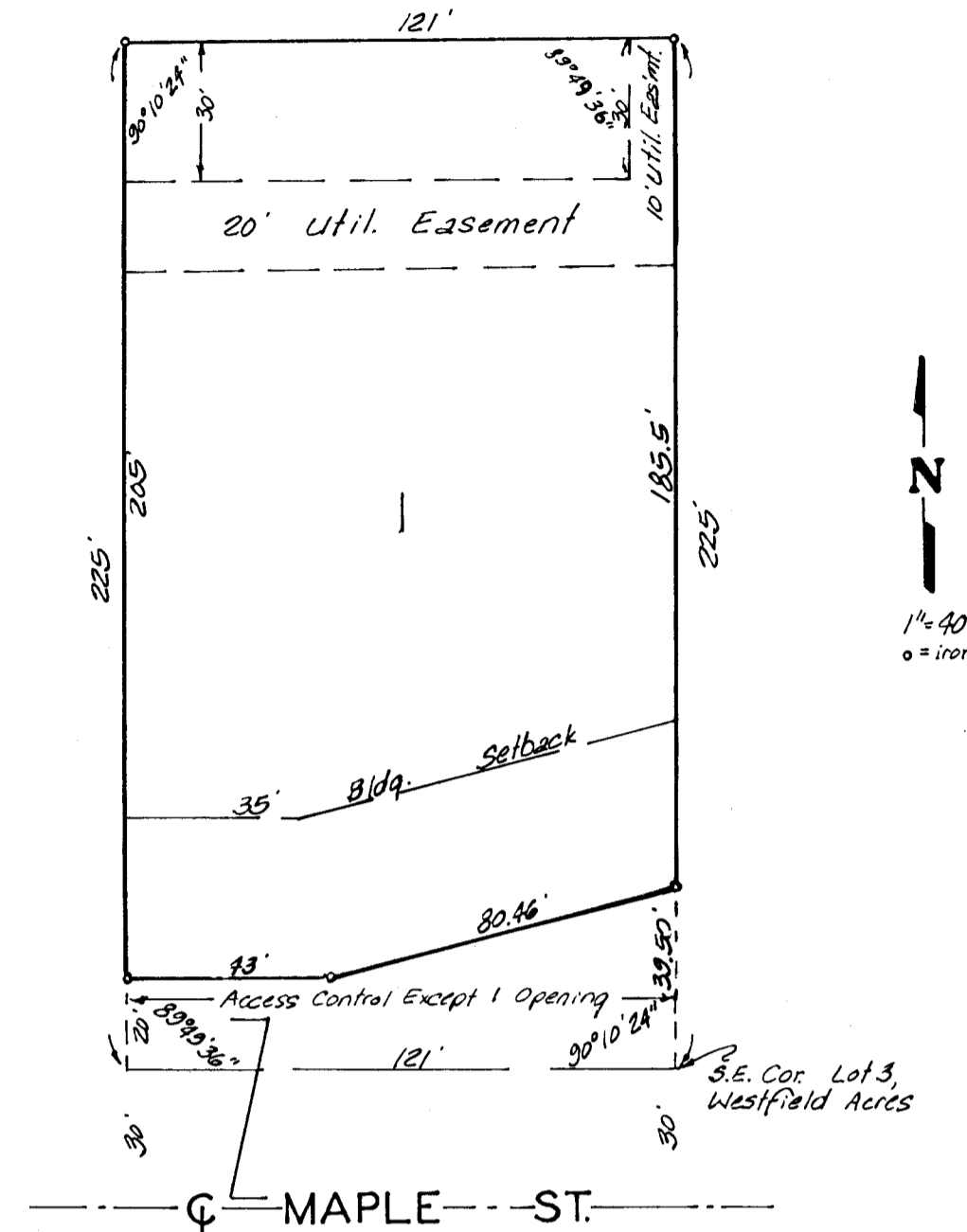


BRAND ADDITION

WICHITA, KANSAS



State of Kansas } ss. We, Baughman Company, P.A.,
 Sedwick County } ss. Surveyors in aforesaid county and state do hereby
 certify that we have surveyed and platted "BRAND
 ADDITION," Wichita, Kansas and that the accom-
 panying plat is a true and correct exhibit of the
 property surveyed described as and being a
 replat of Lot 3 except the north 150 feet thereof,
 Westfield Acres, Sedwick County, Kansas.
 Being situated in the S.E. 1/4 of Sec. 20, Twp. 27-S,
 R-1-W of the 6th P.M., Sedwick County, Kansas.

5/25/83
 Date William L. Korber Surveyor
 Baughman Company P.A.

Know all men by these presents that we, the undersigned, have caused the land described in the surveyors certificate to be platted into a lot and a street to be known as "BRAND ADDITION" Wichita, Kansas. The street is hereby dedicated to and for the use of the public. The utility easements are hereby granted as indicated for the construction and maintenance of all public utilities. All abutters rights of access to or from Maple St. over and across the south line of Lot 1 are hereby granted to the City of Wichita, provided however that Lot 1 shall have access to Maple St. at 1 point as shall be determined by the City Engineer of the City of Wichita, Kansas.

This plat of "BRAND ADDITION," Wichita, Kansas, has been submitted to and approved by the Wichita-Sedwick County Metropolitan Area Planning Commission, Wichita, Kansas. Dated this 7th day of April, 1983.

Wichita-Sedwick County Metropolitan Area Planning Commission

Chairman
 Secretary
 Robert A. Lakin

This plat approved and all dedications shown hereon accepted by the Board of Commissioners of the City of Wichita, Kansas, this 24th day of May, 1983.

Mayor
 City Clerk
 Donald C. Glick

This plat approved and all dedications shown hereon accepted by the Board of Commissioners of Sedwick County, Kansas, this 19th day of June, 1983.

Jack Spratt Chairman
Donald E. Gregg Commissioner
Tom Scott Commissioner
Dorothy K. White County Clerk

We, the undersigned, holders of a mortgage on the above described property do hereby consent to this plat of "BRAND ADDITION," Wichita, Kansas.

Suburban West State Bank

Bill Taylor President

Melvin R. Brand Rosella T. Brand

Contract Purchasers
Lloyd L. Harp

State of Kansas } ss. The foregoing instrument was
 Sedwick County } ss. acknowledged before me this 3rd day of June,
 1983, by Melvin R. Brand and Rosella T. Brand,
 his wife, and Lloyd L. Harp.

My App. Exp. 2/25/85 Notary Public
 Richard Jimmy

Entered on transfer record this 19th day of June, 1983.
Dorothy K. White County Clerk

State of Kansas } ss. This is to certify that this
 Sedwick County } ss. plat has been filed for record in the office of
 the Register of Deeds, this 19th day of June,
 1983, at 10 o'clock AM, and is duly
 recorded.

Bette F. McCant Register of Deeds
Pat Kettler Deputy

State of Kansas } ss. The foregoing instrument was ac-
 Sedwick County } ss. knowledged before me this 3rd day of June,
 1983, by Bill Taylor, President of
 Suburban West State Bank, on behalf of the bank.

My App. Exp. 2/25/85 Notary Public
 Richard Jimmy