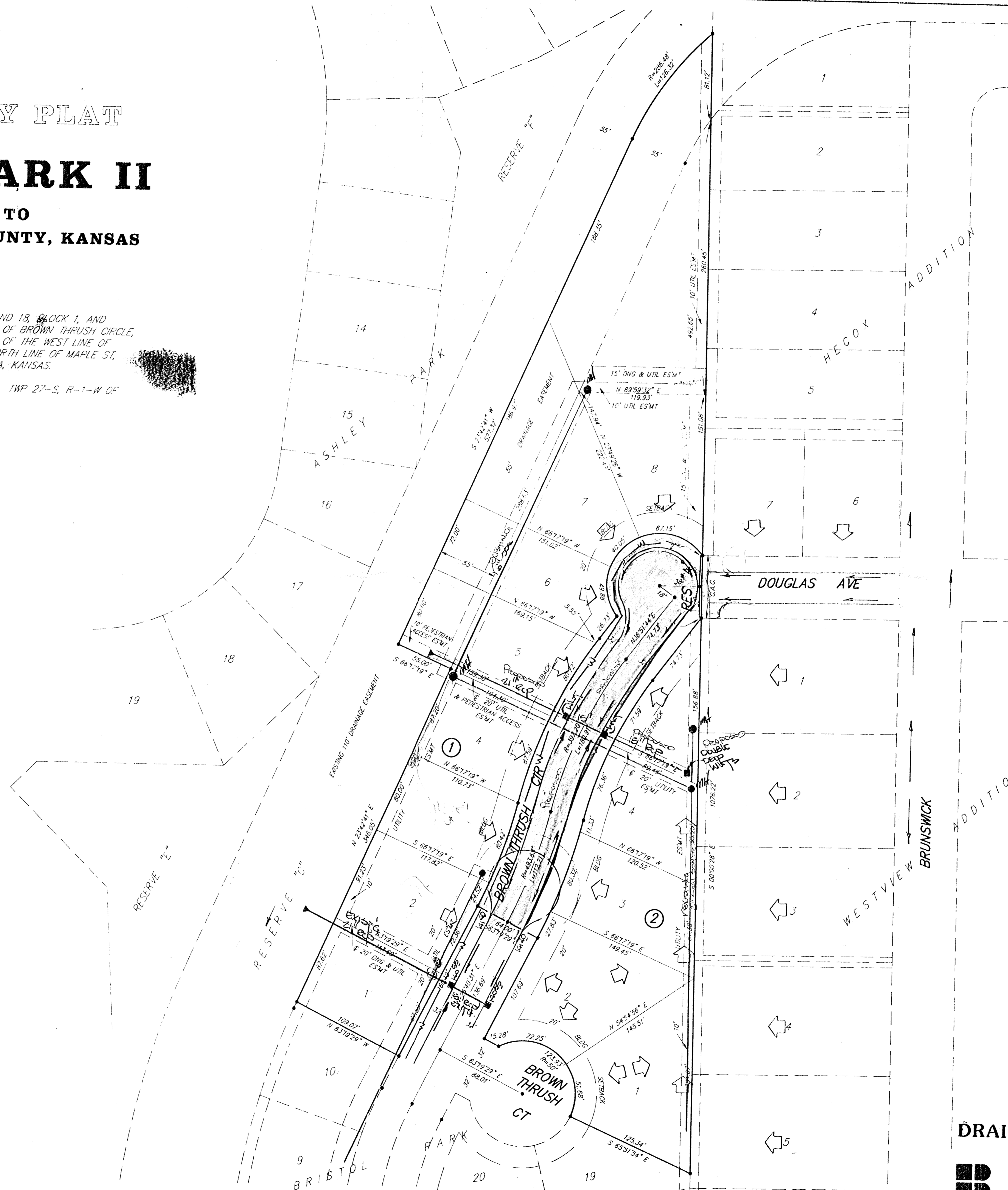
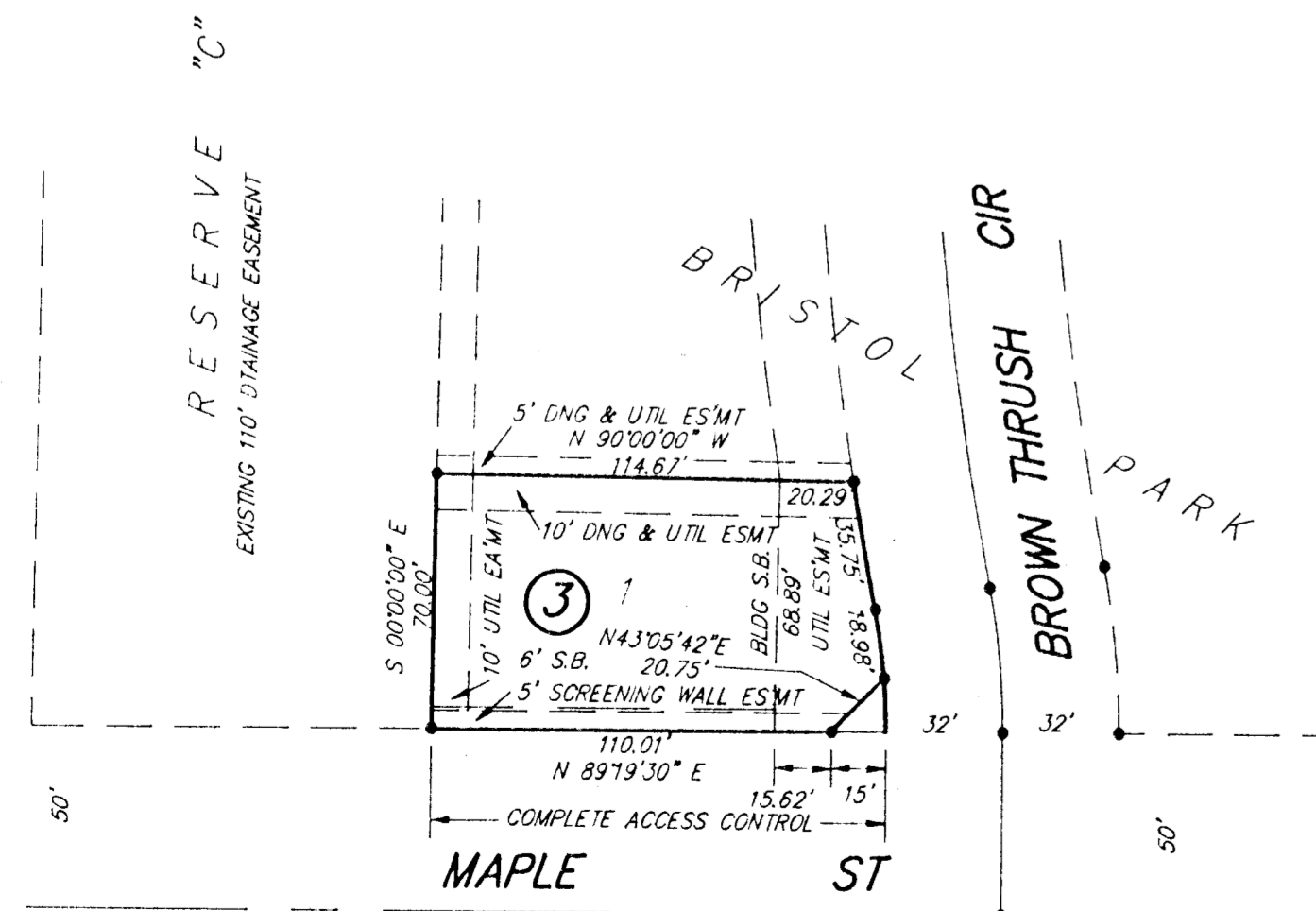


PRELIMINARY PLAT
ASHLEY PARK II
 AN ADDITION TO
 WICHITA, SEDGWICK COUNTY, KANSAS

REPLAT OF LOTS 11, 12, 13, 14, 15, 16, 17, AND 18, BLOCK 1, AND LOTS 1, 2, 3, 4, AND 5, BLOCK 2, AND PART OF BROWN THRUSH CIRCLE, AND THAT PART OF RESERVE "C" LYING EAST OF THE WEST LINE OF LOT 1, BLOCK 1, EXTENDED SOUTH TO THE NORTH LINE OF MAPLE ST, ALL IN BRISTOL PARK AN ADDITION TO WICHITA, KANSAS.

ALL BEING SITUATED IN THE SE 1/4 OF SEC 21, TWP 27-S, R-1-W OF THE 6TH P.M., SEDGWICK COUNTY, KANSAS.

BRISTOL PARK, INC.
 J. W. RUSSEL, PRESIDENT



DRAINAGE & UTILITY CONCEPT

BAUGHMAN COMPANY P. A.
 ENGINEERING & SURVEYING
 316/262-7271 • 315 ELLIS • WICHITA, KANSAS 67211 26 JUNE 1997