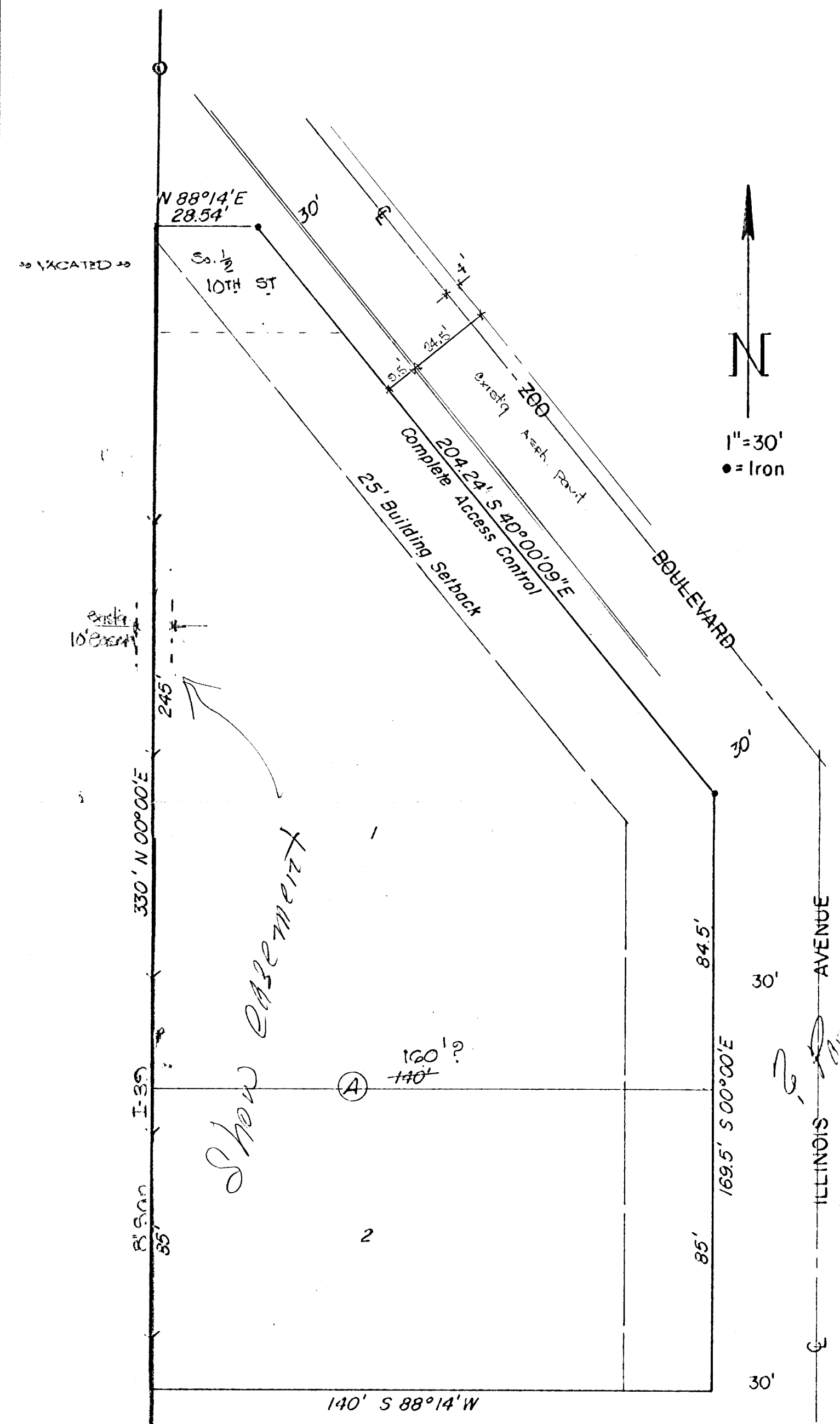


# ATKINSON ADDITION TO WICHITA, SEDGWICK COUNTY, KANSAS



I-39



STATE OF KANSAS, COUNTY OF SEDGWICK, SS:

I, Don C. Moehring II, a Civil Engineer in said State and County, do hereby certify that I have surveyed and platted "ATKINSON ADDITION" to Wichita, Sedgwick County, Kansas, into Lots and a Block, the same being accurately set forth on the accompanying plat and described as being a Replat of Lots 1, 2, 3, and 4, Block 5, Golden Gardens, Sedgwick County, Kansas, and that part of the South half of 10th Street lying between the West line of Zoo Boulevard and a line 200 feet East of the centerline of West Street, as platted in Golden Gardens, Sedgwick County, Kansas; said part of 10th Street is hereby vacated by virtue of KSA 1970 Supp. 12-512(b).

Don C. Moehring II Consulting Engineer

Know all men by these presents that we the undersigned, property owners of the land as above set forth in the Civil Engineer's certificate, have caused the same to be surveyed and platted into Lots and a Block, the same to be known as "ATKINSON ADDITION" to Wichita, Sedgwick County, Kansas. Easements for the construction and maintenance of public utilities, as indicated on the accompanying plat, are hereby granted. All abutter's rights of access to and from Zoo Boulevard, over and across the Northeastly line of Block A, are hereby granted to the City of Wichita.

M.C. Atkinson

Golda Atkinson

STATE OF KANSAS, COUNTY OF SEDGWICK, SS:

Be it remembered that on this \_\_\_\_\_ day of \_\_\_\_\_, 1975, before me, a Notary Public in and for said State and County, came M.C. Atkinson and Golda Atkinson, to me personally known to be the same persons who executed the foregoing instrument of writing and duly acknowledged the execution of the same. In testimony whereof I have hereunto set my hand and affixed my notarial seal the day and year above written.

\_\_\_\_\_, Notary Public

My Commission expires \_\_\_\_\_

This plat of "ATKINSON ADDITION" has been submitted to and approved by the Wichita-Sedgwick County Metropolitan Area Planning Commission, Wichita, Kansas.

Dated this \_\_\_\_\_ day of \_\_\_\_\_, 1975.  
Wichita-Sedgwick County Metropolitan Area Planning Commission

\_\_\_\_\_, Chairman  
David H. Bayouth

\_\_\_\_\_, Secretary  
Robert A. Lakin

This plat approved and all dedications hereon, if any, accepted by the City Commission of the City of Wichita, Sedgwick County, Kansas, this \_\_\_\_\_ day of \_\_\_\_\_, 1975.

\_\_\_\_\_, Mayor  
Connie A. Peters

\_\_\_\_\_, City Clerk  
Donald C. Gislack

This plat approved and all dedications hereon, if any, accepted by the Board of County Commissioners of Sedgwick County, Kansas, this \_\_\_\_\_ day of \_\_\_\_\_, 1975.

\_\_\_\_\_, Chairman  
Earl E. Rush

\_\_\_\_\_, Commissioner  
Tom Scott

\_\_\_\_\_, Commissioner  
John Hale

Attest: \_\_\_\_\_, County Clerk  
George Pierce

STATE OF KANSAS, COUNTY OF SEDGWICK, SS:

This is to certify that this instrument was filed in the Register of Deeds Office at \_\_\_\_\_ on the \_\_\_\_\_ day of \_\_\_\_\_, 1975, and was duly recorded.

\_\_\_\_\_, Register of Deeds  
Bette McCart

\_\_\_\_\_, Deputy  
Pat Kettler

Entered on transfer record this \_\_\_\_\_ day of \_\_\_\_\_, 1975.

\_\_\_\_\_, County Clerk  
George Pierce