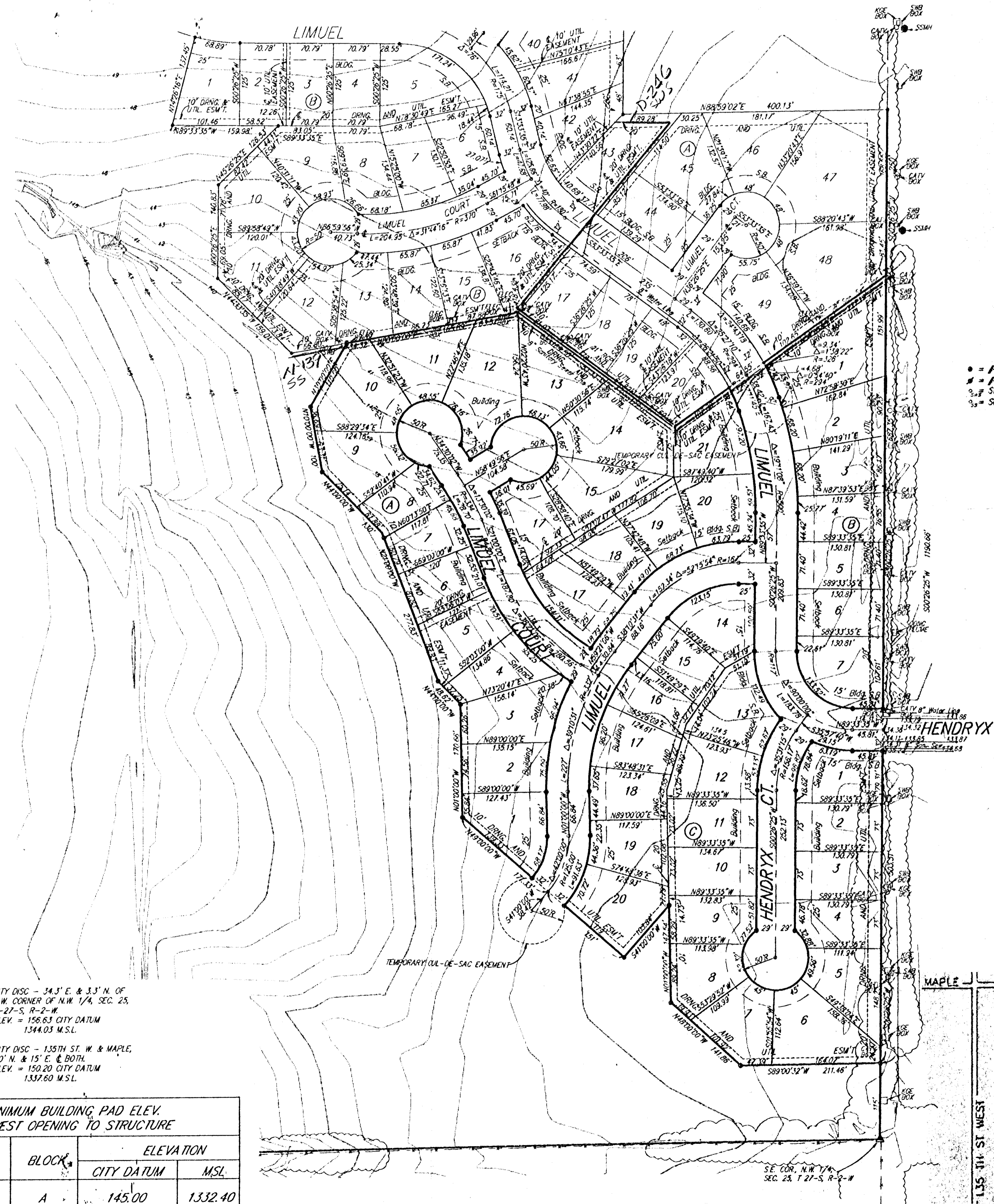


# FINAL PLAT AUBURN HILLS 2nd ADDITION SEDGWICK COUNTY, KANSAS



BENCH MARKS: CITY DISC - 34.3' E. & 3.3' N. OF S.W. CORNER OF N.W. 1/4, SEC. 25, T-27-S, R-2-W  
ELEV. = 156.63 CITY DATUM  
1344.03 M.S.L.

CITY DISC - 135TH ST. W. & MAPLE, 30' W. & 15' E. OF BOTH  
ELEV. = 150.20 CITY DATUM  
1332.60 M.S.L.

MINIMUM BUILDING PAD ELEV. LOWEST OPENING TO STRUCTURE			
LOT	BLOCK	ELEVATION	
		CITY DATUM	MSL
1, 2, 3, 4, 5, 6, 7, 8, 9, 10	A	145.00	1332.40
6, 7, 8, 9, 20	C	144.00	1331.40

- = #4 REBAR W/ BAUGHMAN CAP (SET)
- = #4 REBAR W/ BAUGHMAN CAP (FOUND)
- = Storm Water Man Hole
- = Sanitary Sewer Man Hole

State of Kansas ) SS  
County of Sedgwick )  
We, Baughman Company P.A., Surveyors in aforesaid county and state do hereby certify that, under the supervision of the undersigned, we have surveyed and platted "AUBURN HILLS 2ND ADDITION", Wichita, Sedgwick County, Kansas and that the accompanying plat is a true and correct exhibit of the property surveyed, described as follows: That part of the N.W. 1/4 of Sec. 25, Twp. 27-S, R-2-W of the 6th P.M., Sedgwick County, Kansas, described as beginning at the southeast corner of Lot 48, Block A, Auburn Hills Addition, Wichita, Sedgwick County, Kansas said point being on the east line of said NW 1/4, 1,339.35 feet south of the NE Corner of the said NW 1/4; thence S00°26'25"W along the east line of said NW 1/4 1,241.66 feet, said point being 115 feet north of the corner of said NW 1/4; thence S89°00'32"W, 211.46 feet; thence N48°W, 141.86 feet; thence N01°W, 147.54 feet; thence S41°W, 103.84 feet; thence N49°W, 322.33 feet; thence N01°W, 170.66 feet; thence N44°W, 48.62 feet; thence N21°W, 277.83 feet; thence N44°W, 130 feet; thence N10°W, 100 feet; thence N30°E, 110 feet to a point on the south line of Lot 13, Block B, in said Auburn Hills Addition; thence N80°E, 263.73 feet to the southwest corner of Lot 17, Block B, in said Auburn Hills Addition; thence S53°33'35"E, 291.55 feet to the southerly most point of Lot 20, Block B in said Auburn Hills Addition; thence N54°28'55"E, 394.54 feet to the point of beginning.

Baughman Company, P.A.  
  
\_\_\_\_\_  
Michael G. Conrey Surveyor

Know all men by these presents that we, the undersigned have caused the land described in the Surveyors certificate to be platted into Lots, Blocks, and Streets to be known as "AUBURN HILLS 2ND ADDITION", Wichita, Sedgwick County, Kansas. The utility easements are hereby granted as indicated for the construction and maintenance of all public utilities. The drainage and utility easements are hereby granted as indicated for drainage purposes and for the construction and maintenance of all public utilities. The drainage easements are hereby granted as indicated for drainage purposes. The streets are hereby dedicated to and for the use of the public. The Minimum Building Pad Elevations for lowest opening to the structures shall be as shown on the face of the plat. The temporary cul-de-sac easement shall expire at such time as Limuel is extended further south or terminated as a permanent cul-de-sac on the property to the south.

Auburn Hills, Inc.  
  
\_\_\_\_\_  
Jay W. Russell President

State of Kansas) SS  
Sedgwick County) The foregoing instrument acknowledged before me this \_\_\_\_\_ day of \_\_\_\_\_, 1996, by Jay W. Russell, President, Auburn Hills, Inc. on behalf of corporation.

\_\_\_\_\_  
Notary Public  
My App't Exp. \_\_\_\_\_

This plat of "AUBURN HILLS 2ND ADDITION", Wichita, Sedgwick County, Kansas, has been submitted to and approved by the Wichita-Sedgwick County Metropolitan Area Planning Commission, Wichita, Kansas.  
Dated this \_\_\_\_\_ day of \_\_\_\_\_, 1996.  
Wichita-Sedgwick County Metropolitan Area Planning Commission.

\_\_\_\_\_  
Susan Osborne-Howes Chairman  
  
\_\_\_\_\_  
Marvin S. Krout Secretary

This plat approved and all dedications shown hereon accepted by the City Council of the City of Wichita, Kansas, this \_\_\_\_\_ day of \_\_\_\_\_, 1996.

\_\_\_\_\_  
Bob Knight Mayor  
  
\_\_\_\_\_  
Pat Burnett Deputy City Clerk

Entered on transfer record this \_\_\_\_\_ day of \_\_\_\_\_, 1996.

\_\_\_\_\_  
Susan E. Crockett-Spoon County Clerk

State of Kansas) SS  
Sedgwick County) This is to certify that this plat has been filed for record in the office of the Register of Deeds, this \_\_\_\_\_ day of \_\_\_\_\_, 1996, at \_\_\_\_\_ o'clock \_\_\_\_\_ M; and is duly recorded.

\_\_\_\_\_  
Pat Kettler Register of Deeds  
  
\_\_\_\_\_  
Ed Resa Deputy