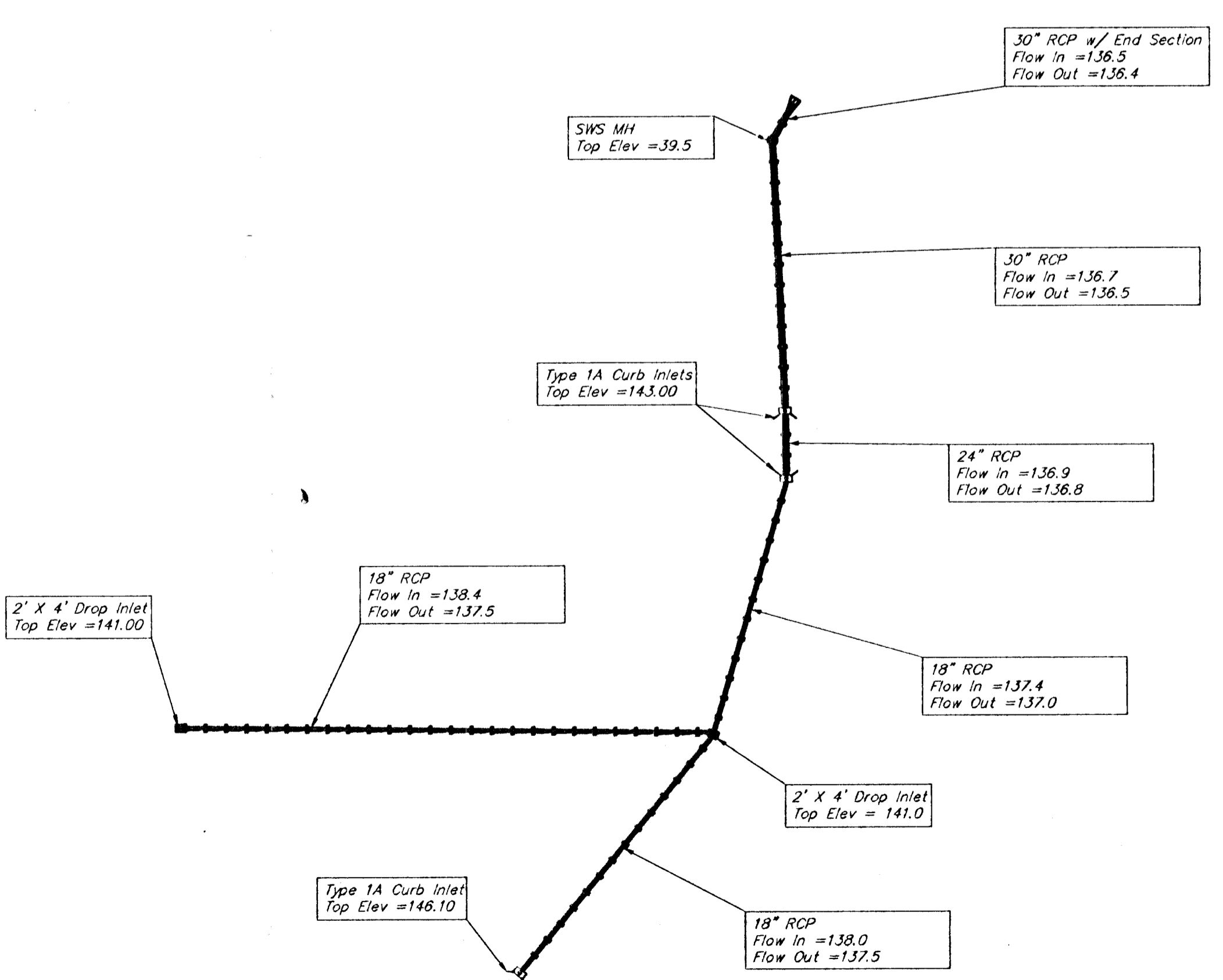
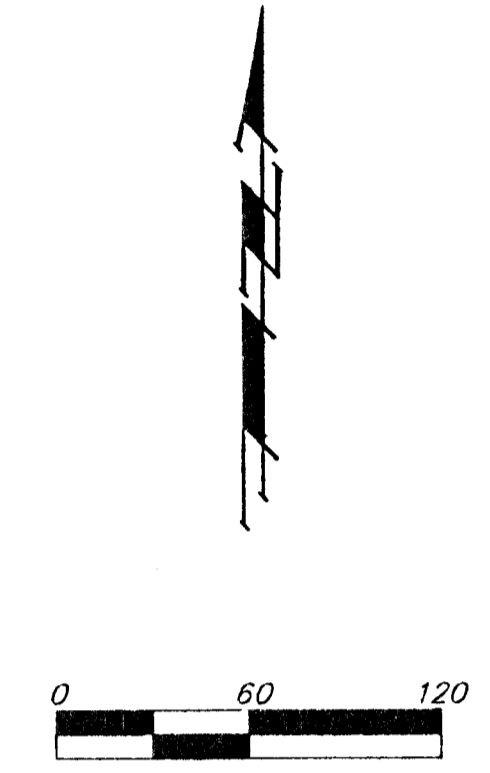
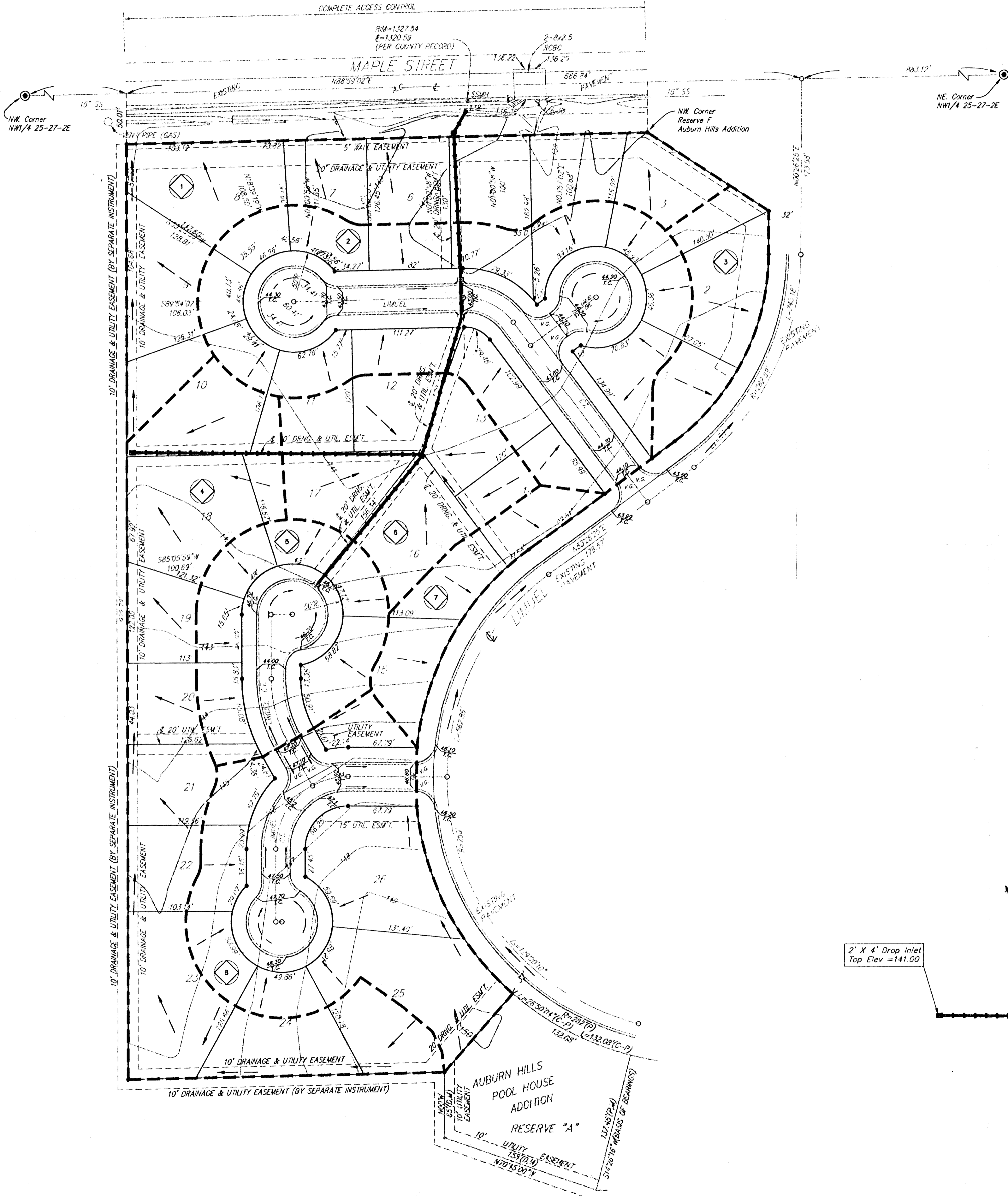


DRAINAGE PLAN

AUBURN HILLS 3RD ADDITION

WICHITA, SEDGWICK COUNTY, KANSAS



Drainage Area	Area (acres)	C _s	C _{ma}	T _s (min.)	I _a (in/hr)	I _w (in/hr)	Q _s (cfs)	Q _{ma} (cfs)
1	1.4	0.48	0.67	15	3.83	7.37	2.6	6.9
2	2.1	0.48	0.67	15	3.83	7.37	3.9	10.4
3	0.4	0.48	0.67	15	3.83	7.37	0.7	2.0
4	1.7	0.48	0.67	15	3.83	7.37	3.1	8.4
5	0.8	0.48	0.67	15	3.83	7.37	1.5	3.9
6	0.8	0.48	0.67	15	3.83	7.37	1.5	3.9
7	0.4	0.48	0.67	15	3.83	7.37	0.7	2.0
8	1.6	0.48	0.67	15	3.83	7.37	2.9	7.9

NOTE: The proposed drainage plan provided herein is a generally defined plan to follow for design. It is recognized and assumed that upon the final design of street and storm sewer improvements within this plot that the designer will modify or alter the general drainage plan as necessary in order to implement the installation of the improvements to obtain the most economical design and construction possible.