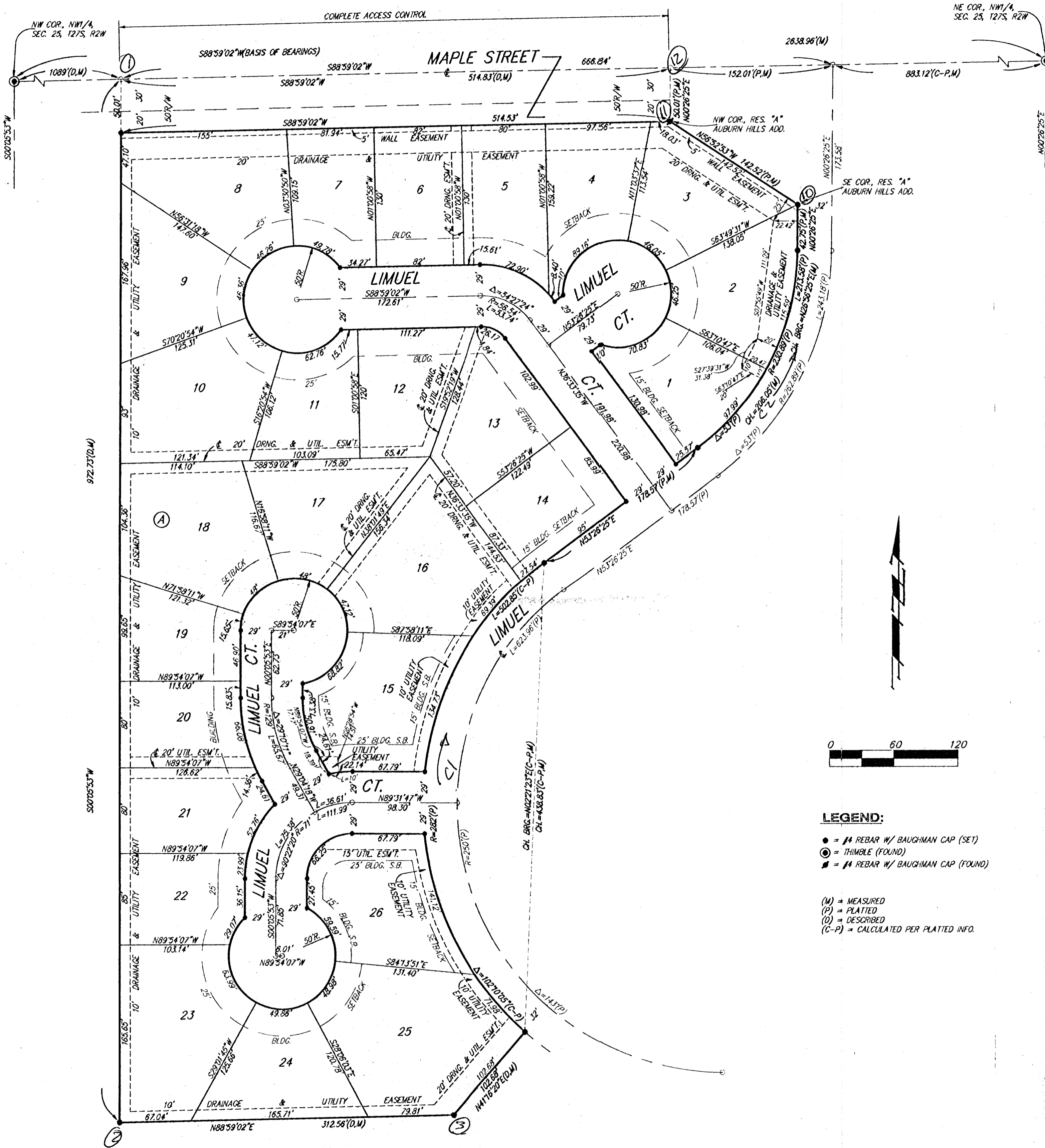


# AUBURN HILLS 3RD ADDITION

## WICHITA, SEDGWICK COUNTY, KANSAS



State of Kansas )  
County of Sedgwick ) SS We, Baughman Company P.A., Surveyors in aforesaid county and state do hereby certify that, under the supervision of the undersigned, we have surveyed and platted "AUBURN HILLS 3RD ADDITION", Wichita, Sedgwick County, Kansas and that the accompanying plat is a true and correct exhibit of the property surveyed, described as follows: That part of the NW1/4 of Sec. 25, Twp. 27-S, R-2-W of the 6th P.M., Sedgwick County, Kansas, described as commencing at the NW Corner of said NW1/4; thence N88°59'02"E along the north line of said NW1/4, 1089 feet for a point of beginning; thence S00°05'53"W parallel with the west line of said NW1/4, 972.73 feet; thence N88°59'02"E parallel with the north line of said NW1/4, 312.56 feet; thence N41°16'20"E, 102.68 feet to a point on the westerly right-of-way line of Limuel as platted in Auburn Hills Addition, Wichita, Sedgwick County, Kansas; thence north-westerly, northerly, and northeasterly along said right-of-way line, being a curve to the right, having a central angle of 102°10'05" and a radius of 282 feet, an arc distance of 502.85 feet, (having a chord length of 438.83 feet bearing N02°21'23"E), to the P.T. of said curve; thence N53°26'25"E along said right-of-way line, 178.57 feet to the P.C. of a curve to the left; thence northeasterly and northerly along said right-of-way line, having a central angle of 53' and a radius of 230.89 feet, an arc distance of 213.58 feet, (having a chord length of 206.05 feet bearing N26°56'25"E), to the P.T. of said curve; thence N00°26'25"E along said right-of-way line, 42.75 feet to the SE Corner of Reserve "A" as platted in said Auburn Hills Addition; thence N56°52'53"W along the southwesterly line of said Reserve "A", 142.52 feet to the NW Corner of said Reserve "A"; thence N00°26'25"E parallel with the east line of said NW1/4, 50.01 feet to a point on the north line of said NW1/4; thence S88°59'02"W along the north line of said NW1/4, 514.83 feet to the point of beginning.

Existing easements and dedications being vacated by virtue of K.S.A. 12-512(b).

Baughman Company, P.A.

Michael G. Conroy, Surveyor

Know all men by these presents that we, the undersigned have caused the land described in the Surveyors certificate to be platted into Lots, a Block, and Streets, to be known as "AUBURN HILLS 3RD ADDITION", Wichita, Sedgwick County, Kansas. The utility easements are hereby granted as indicated for the construction and maintenance of all public utilities. The drainage and utility easements are hereby granted as indicated for drainage purposes and for the construction and maintenance of all public utilities. The drainage easement is hereby granted as indicated for drainage purposes. The wall easements are hereby granted as indicated for the construction and maintenance of a private screening wall and utility main lines and service lines shall be allowed to cross these easements. The streets are hereby dedicated to and for the use of the public. All abutters rights of access to or from Maple Street over and across the north line of Lots 3, 4, 5, 6, 7, and 8, Block A, are hereby granted to the City of Wichita, Kansas.

West Wichita Development, Inc.

Jay W. Russell, President

State of Kansas )  
Sedgwick County ) SS The foregoing instrument acknowledged before me this 1st day of July, 1997, by Jay W. Russell, President of West Wichita Development, Inc., on behalf of the corporation.

Cheryl L. Arthur, Notary Public

My App't Exp. 02/28/01

This plat of "AUBURN HILLS 3RD ADDITION", Wichita, Sedgwick County, Kansas, has been submitted to and approved by the Wichita-Sedgwick County Metropolitan Area Planning Commission, Wichita, Kansas.

Dated this \_\_\_\_\_ day of \_\_\_\_\_, 1997.  
Wichita-Sedgwick County Metropolitan Area Planning Commission.

\_\_\_\_\_ Chairman  
 John C. Frye

\_\_\_\_\_ Secretary  
 Marvin S. Krout

This plat approved and all dedications shown hereon accepted by the City Council of the City of Wichita, Kansas, this \_\_\_\_\_ day of \_\_\_\_\_, 1997.

\_\_\_\_\_ Mayor  
 Bob Knight

\_\_\_\_\_ City Clerk  
 Pat Burnett

Entered on transfer record this \_\_\_\_\_ day of \_\_\_\_\_, 1997.

\_\_\_\_\_ County Clerk  
 James Alford

State of Kansas )  
Sedgwick County ) SS This is to certify that this plat has been filed for record in the office of the Register of Deeds, this \_\_\_\_\_ day of \_\_\_\_\_, 1997, at \_\_\_\_\_ o'clock \_\_\_\_\_ M, and is duly recorded.

\_\_\_\_\_ Register of Deeds  
 Larry Consolver

\_\_\_\_\_ Deputy  
 Michael D. Hurtt

We the undersigned, holders of a mortgage on the above described property, do hereby consent to this plat of "AUBURN HILLS 3RD ADDITION", Wichita, Sedgwick County, Kansas.

State Bank of Colwich

James D. Ashcraft, AUB (1996)

State of Kansas )  
Sedgwick County ) SS The foregoing instrument acknowledged before me, this \_\_\_\_\_ day of \_\_\_\_\_, 1997, by \_\_\_\_\_ of the State Bank of Colwich, on behalf of the bank.

\_\_\_\_\_ Notary Public

My App't. Exp. \_\_\_\_\_