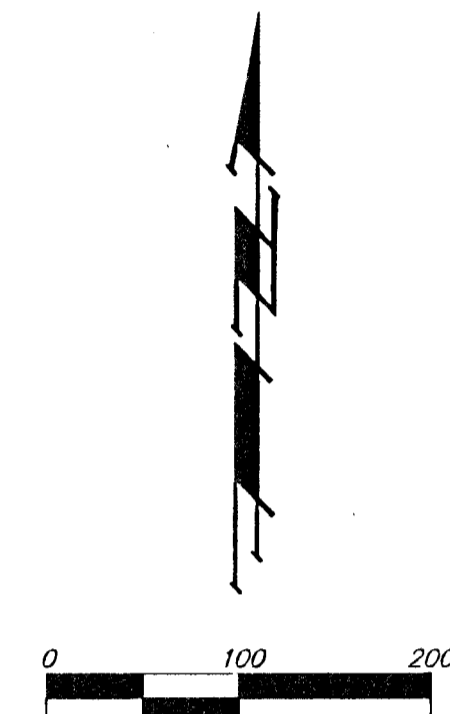


AUBURN HILLS 4TH ADDITION

WICHITA, SEDGWICK COUNTY, KANSAS

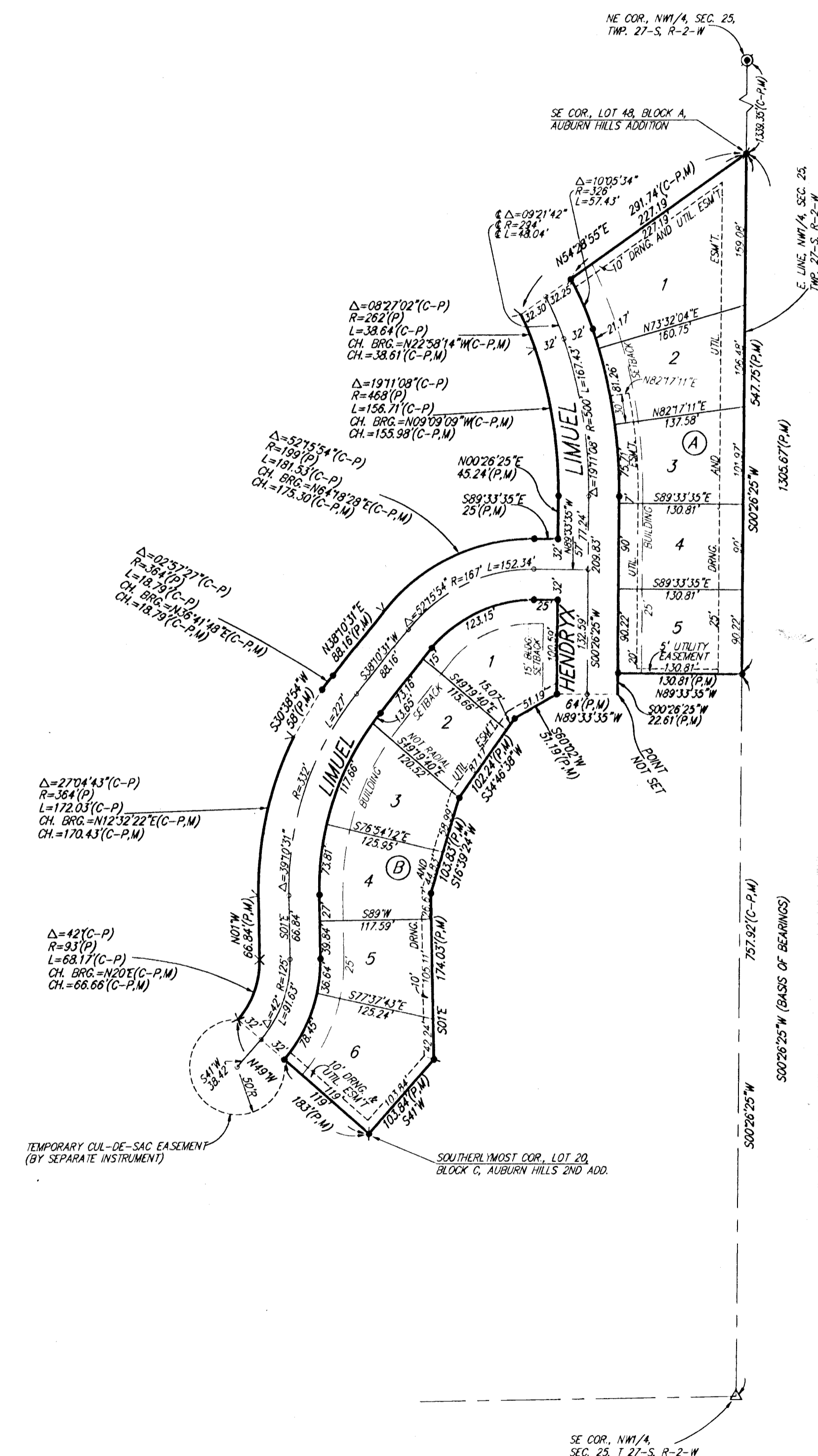


- = #4 REBAR W/ BAUGHMAN CAP (SET)
 - ▲ = #4 REBAR W/ BAUGHMAN CAP (FOUND)
 - △ = 4"x4" STONE (FOUND)
 - ⊙ = 1/2" IRON PIPE (FOUND)
 - × = CROSS (SET)
 - > = "Y" NOTCH (SET)
- (C-P) = CALCULATED PER PLATTED INFO.
 (P) = PLATTED
 (M) = MEASURED

BENCH MARKS: CITY DISC - 34.3' E. & 3.3' N. OF S.W. CORNER OF N.W. 1/4, SEC. 25, T-27-S, R-2-W. ELEV. = 156.63 CITY DATUM 1344.03 M.S.L.

CITY DISC - 135TH ST. W. & MAPLE, 30' N. & 15' E. & BOTH. ELEV. = 150.20 CITY DATUM 1337.60 M.S.L.

MINIMUM BUILDING PAD ELEVATION FOR LOWEST OPENING TO THE STRUCTURES			
LOT	BLOCK	ELEVATION	
		CITY DATUM	MSL
6	B	138.6	1326.0



State of Kansas) SS
 County of Sedgwick) We, Baughman Company P.A., Surveyors in aforesaid county and state do hereby certify that, under the supervision of the undersigned, we have surveyed and platted "AUBURN HILLS 4TH ADDITION", Wichita, Sedgwick County, Kansas and that the accompanying plat is a true and correct exhibit of the property surveyed, described as and being a replat of all of Lots 1, 2, 3, 4, 5, and 6, Block B, together with all of Lots 14, 15, 16, 17, 18, 19, and 20, Block C, together with all of Limuel and that part of Hendryx lying east of and adjacent to the east line of Lot 14, Block C, all as platted in Auburn Hills 2nd Addition, Wichita, Sedgwick County, Kansas.

All being situated in the NW/4 of Sec. 25, Twp. 27-S, R-2-W of the 6th P.M., Sedgwick County, Kansas.

Existing public easements and dedications being vacated by virtue of K.S.A. 12 - 512(b).

Baughman Company, P.A.

Michael G. Conrey 13-877 29-97, Surveyor
 Michael G. Conrey

Know all men by these presents that we, the undersigned, have caused the land described in the Surveyors certificate to be platted into Lots, Blocks, and Streets to be known as "AUBURN HILLS 4TH ADDITION", Wichita, Sedgwick County, Kansas. The utility easements are hereby granted as indicated for the construction and maintenance of all public utilities. The drainage and utility easements are hereby granted as indicated for drainage purposes and for the construction and maintenance of all public utilities. The streets are hereby dedicated to and for the use of the public. The Minimum Building Pad Elevation for the lowest opening to the structures on Lot 6, Block B, shall be 138.6 City Datum (1326.0 M.S.L.).

Auburn Hills, Inc.
Jay W. Russell, President
 Jay W. Russell
 R.C.K. Construction, Inc.
Randall E. Ketzner, President
 Randall E. Ketzner

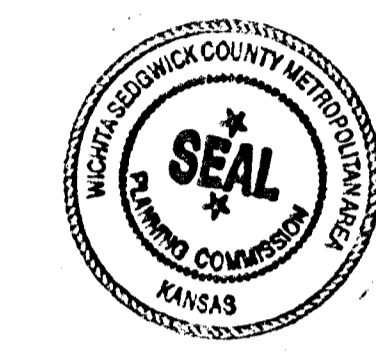
State of Kansas) SS
 Sedgwick County) The foregoing instrument acknowledged before me this 14th day of August, 1997, by Jay W. Russell, President of Auburn Hills, Inc., on behalf of the corporation.

My App't Exp. 05/05/01 Cheryl L. Arthur, Notary Public
 CHERYL L. ARTHUR
 NOTARY PUBLIC
 STATE OF KANSAS

State of Kansas) SS
 Sedgwick County) The foregoing instrument acknowledged before me this 14th day of August, 1997, by Randall E. Ketzner, President of R.C.K. Construction, Inc., on behalf of the corporation.

My App't Exp. 05/05/01 Cheryl L. Arthur, Notary Public
 CHERYL L. ARTHUR
 NOTARY PUBLIC
 STATE OF KANSAS

This plat of "AUBURN HILLS 4TH ADDITION", Wichita, Sedgwick County, Kansas, has been submitted to and approved by the Wichita-Sedgwick County Metropolitan Area Planning Commission, Wichita, Kansas.
 Dated this 26th day of June, 1997.
 Wichita-Sedgwick County Metropolitan Area Planning Commission.



John C. Frye, Chairman
 John C. Frye
Marvin S. Kroat, Secretary
 Marvin S. Kroat

This plat approved and all dedications shown hereon accepted by the City Council of the City of Wichita, Kansas, this 12th day of AUGUST, 1997.

Bob Knight, Mayor
 Bob Knight
Pat Burnett, City Clerk
 Pat Burnett

Entered on transfer record this _____ day of _____, 1997.
 _____, County Clerk
 James Alford

State of Kansas) SS
 Sedgwick County) This is to certify that this plat has been filed for record in the office of the Register of Deeds, this _____ day of _____, 1997, at _____ o'clock _____ M.; and is duly recorded.

_____, Register of Deeds
 Larry Consvolver
 _____, Deputy
 Michael D. Hurtt

