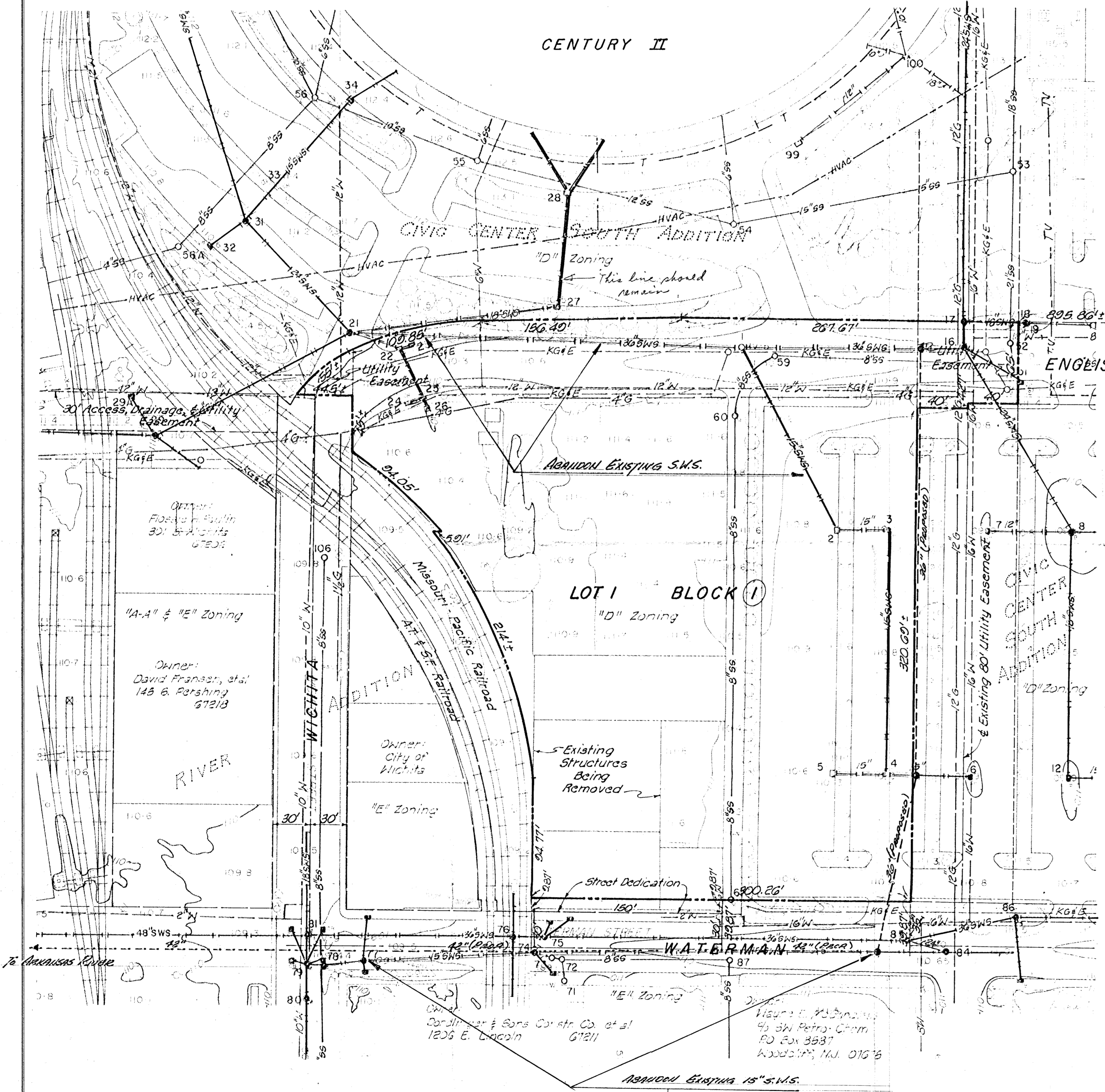
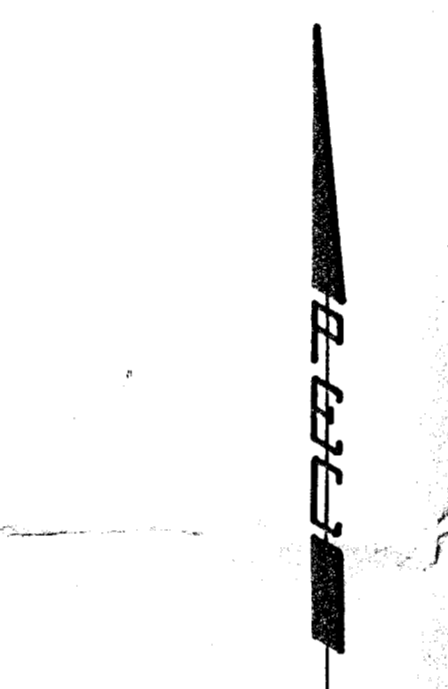


PRELIMINARY PLAT

CIVIC CENTER SOUTH 2nd ADDITION



N.E. Cor. SE 1/4, Sec. 20,
T27S, R1E, G1h RM.



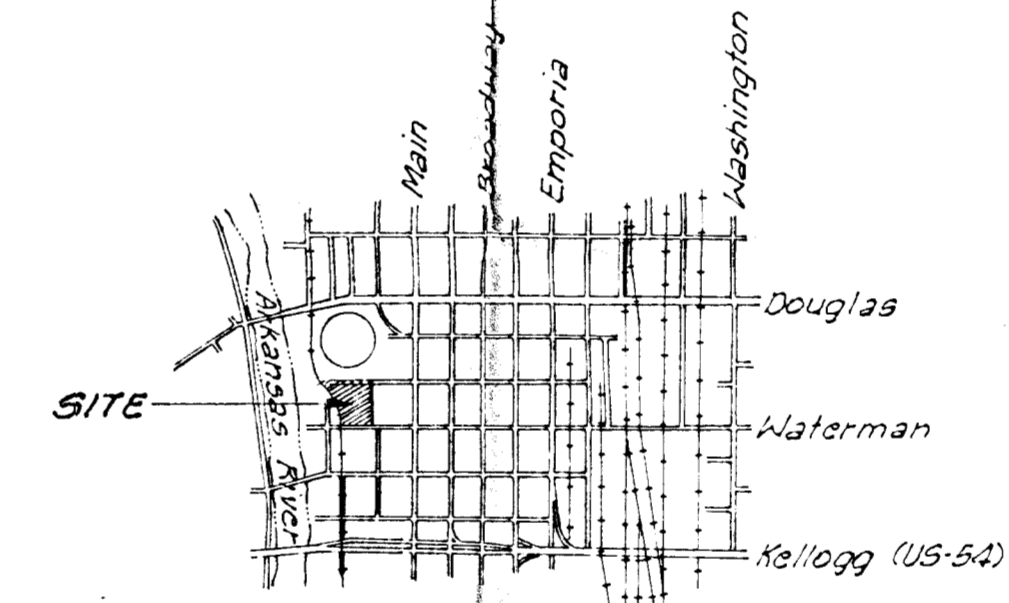
Scale: 1"=50'
September 12, 1983

BM- Arkansas River & Douglas - U.S.G.S.
Gaging Sta. Disc, southeast corner
bridge. Elev. 115.89 City Datum

BM- Arkansas River & Lewis - City of
Wichita Bench Mark Disc, sidewalk
northeast corner bridge.
Elev. 112.68 City Datum

Date of Topography- February, 1983

Owner: City of Wichita
% James Clancy
Director of Community Facilities
Century II - 255 W. Douglas 67202
Board of Park Commissioners
% Tom Allen
Director of Parks
455 N. Main
Wichita, Ks. 67202



Engineer: Professional Engineering Consultants, P.A.
1440 E. English
Wichita, Kansas 67211

DRAINAGE CONCEPT

- EXISTING S.W.S. TO REMAIN
 - EXISTING S.W.S. TO BE ABANDONED
 - - - - - PROPOSED S.W.S.
- The lot shall be graded to drain to the streets, gutters, or existing and/or proposed storm water sewers, via drains, flumes, storm water sewers and/or any other approved drainage facilities.