

CIVIC CENTER SOUTH 2nd ADDITION

TO WICHITA, SEDGWICK COUNTY, KANSAS

State of Kansas
County of Sedgwick

I, R.W. Linn, a Professional Engineer in aforesaid State and County, do hereby certify that on this 17th day of April, 1984, I have caused to be surveyed and platted "CIVIC CENTER SOUTH 2ND ADDITION," to Wichita, Sedgwick County, Kansas, into a lot, a block, and a street, all located in the SE 1/4 of Section 20, Township 27 South, Range 1 East of the 6th PM, being in part a replat of:

A part of Lots 48, 49, and 50, together with Lots 43, 44, 45, 46, 47, 51, 52, and 53, together with the vacated Missouri-Pacific Railroad right-of-way adjacent to the west lines of said Lots 45, 51, and 53, all in River Addition to Wichita, Sedgwick County, Kansas;

A 14-foot alley as platted in Griefenstein's 6th Addition to Wichita, Sedgwick County, Kansas, being adjacent to the east lines of said Lots 43, 46, 47, 51, and 52 in River Addition;

Part of Government Lot 3 in said SE 1/4 of Section 20, T27S, R1E, being adjacent to said Lots 52 and 53 in River Addition;

Lot 1, Block 4, together with a part of Lot 1, Block 3, together with the east 2.5 feet of the alley adjacent to the west line of said Lot 1, Block 3, all in Civic Center South Addition, Wichita, Sedgwick County, Kansas;

And being more particularly described as:

Commencing at the intersection of the south line of English Street with the west line of Main Street, said point also being the NE corner of Lot 1, Block 3, Civic Center South Addition, Wichita, Sedgwick County, Kansas; thence bearing N80°26'50"W along the north line of said Lot 1 a distance of 300.00 feet to the Point of Beginning;

thence continuing bearing N80°26'50"W along said north line a distance of 40.00 feet; thence bearing S0°32'22"W a distance of 428 feet; thence bearing N80°27'32"W along said north line a distance of 40.00 feet to a point on the west line of an 80-foot Utility Easement as platted in said Civic Center South Addition, being also the west right-of-way line of Water Street as originally established; thence bearing S0°33'50"W along said west line a distance of 380.87 feet to a point on the north line of Waterman Street; thence bearing N80°29'39"W along said north line a distance of 149.96 feet more or less to a point on the east line of said Lots 45, 51, 53, River Addition; thence south along said east line a distance of 9.87 feet to a point on the north line of Waterman Street; thence west along said north line a distance of 149.96 feet more or less to a point on the easterly right-of-way line of the Missouri-Pacific Railroad; thence bearing N0°36'00"E along said easterly r-o-w line a distance of 103.15 feet to a point on a curve to the left; thence along said curve to the left, being still said easterly r-o-w line, having a radius of 380.78 feet, through a central angle of 46°05'56" and having a chord bearing N28°56'18"W, an arc distance of 306.37 feet to a point on the east line of Wichita Street as originally established; thence bearing N0°36'00"E along said east line a distance of 43.10 feet to a point on the north line extended of (English Street) Vacation Ordinance 31-293; thence bearing N80°28'19"W along said north line extended a distance of 43.98 feet to a point on a curve to the right, said point being on the north line of English Street as platted in said Civic Center South Addition, being also on the south line of Lot 1, Block 2, said Civic Center South Addition; thence along said curve to the right, being the south line of said Lot 1, having a radius of 97.21 feet, through a central angle of 31°46'05" and having a chord bearing N50°04'55"E, an arc distance of 53.90 feet to the P.C. of a curve to the right; thence along said curve to the right, being still the south line of said Lot 1, having a radius of 213.10 feet, through a central angle of 23°02'55" and having a chord bearing N71°29'24"E, an arc distance of 109.86 feet; thence bearing N80°00'51"E along the south line of said Lot 1 a distance of 156.25 feet; thence bearing S80°28'22"E along the south line of said Lot 1 a distance of 227.71 feet; thence bearing S80°26'50"E along the south line of said Lot 1 a distance of 40.00 feet; thence bearing S0°34'44"W a distance of 64.90 feet to the Point of Beginning.

Know all men by these presents that we, the undersigned owners of the land as above set forth in the Engineer's Certificate, have caused the land to be surveyed and platted into a lot, a block, and a street, the same to be known as "CIVIC CENTER SOUTH 2ND ADDITION," to Wichita, Sedgwick County, Kansas. Easements, as indicated, for the construction and maintenance of public utilities, and for drainage, are hereby granted. The street is hereby dedicated to and for the use of the public. All portions of the land parcels and platted additions as listed in the Engineer's text within the above described tract are hereby vacated and replatted by virtue of KSA 12-512(b) amended.

Board of City Commissioners of the City of Wichita, Kansas

Robert K. Chisholm
Mayor
Robert G. Knight

Attest:
Donald C. Gisick
City Clerk
Donald C. Gisick

State of Kansas
County of Sedgwick

Be it remembered that on this _____ day of _____, 1984, before me, a Notary Public in aforesaid State and County, came Robert G. Knight, Mayor of the City of Wichita, to me personally known to be the same person who executed the foregoing instrument of writing and duly acknowledge the execution of same for and on behalf and as the voluntary act and deed of the Board of City Commissioners of the City of Wichita, Kansas, in testimony whereof I have hereunto set my hand and affixed my Notarial Seal the day and year above written.

Notary Public

My Appointment Expires: _____

This plat approved and all dedications shown hereon are accepted by the Board of County Commissioners of Sedgwick County, Kansas. Dated this _____ day of _____, 1984.

Chairman

Commissioner

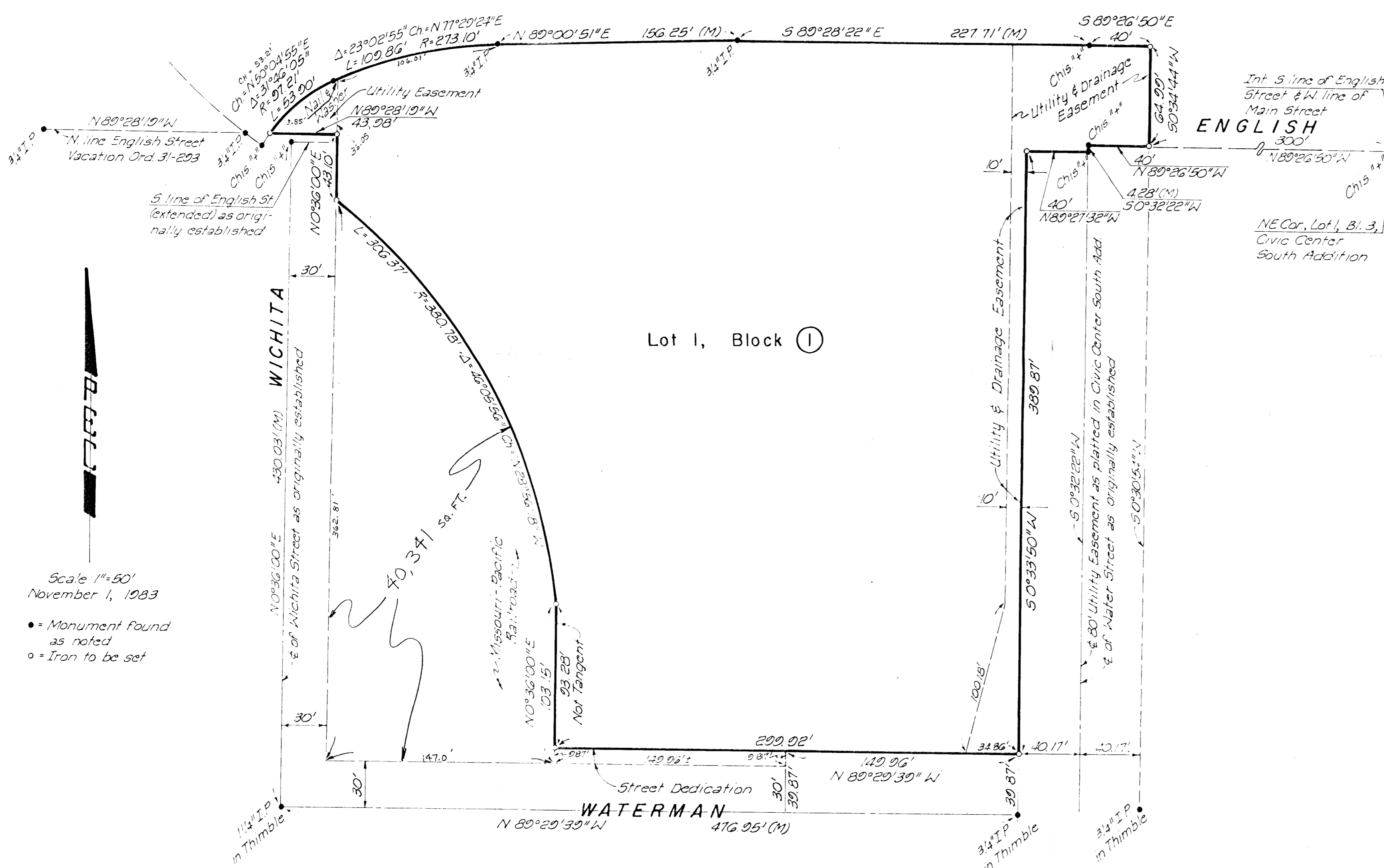
Commissioner

Attest: _____

County Clerk

Entered on Transfer Record this _____ day of _____, 1984

County Clerk



Scale 1"=50'
November 1, 1983
• Monument Found as noted
○ Iron to be set

This plat has been submitted to and approved by the Wichita-Sedgwick County Metropolitan Area Planning Commission, Wichita, Kansas. Dated this _____ day of _____, 1984.

Robert K. Chisholm
Chairman
Robert K. Chisholm
Robert A. Lakin
Secretary
Robert A. Lakin

This plat approved and all dedications shown hereon are accepted by the City Commission of the City of Wichita, Kansas. Dated this 17th day of APRIL, 1984.

Robert G. Knight
Mayor
Robert G. Knight
Donald C. Gisick
City Clerk
Donald C. Gisick

This is to certify that this instrument was filed for record in the Register of Deeds Office at _____ m. on this _____ day of _____, 1984.

Register of Deeds
Boris F. McGuff

Deputy
Pat Kettler