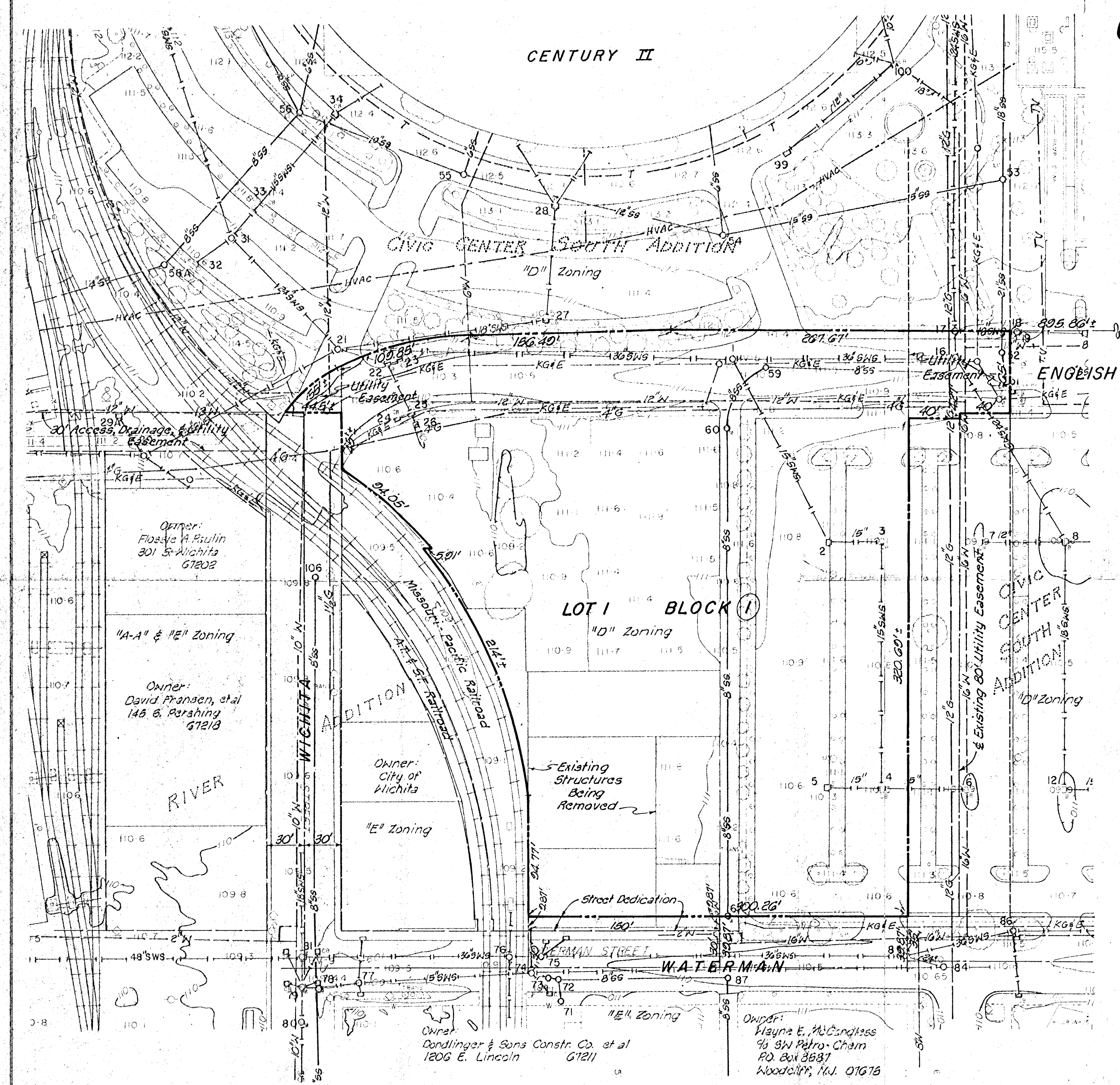


PRELIMINARY PLAT

CIVIC CENTER SOUTH 2nd ADDITION



N.E. Cor. SE 14, Sec. 20,  
T27 S, R1E, G11 M.

870'±

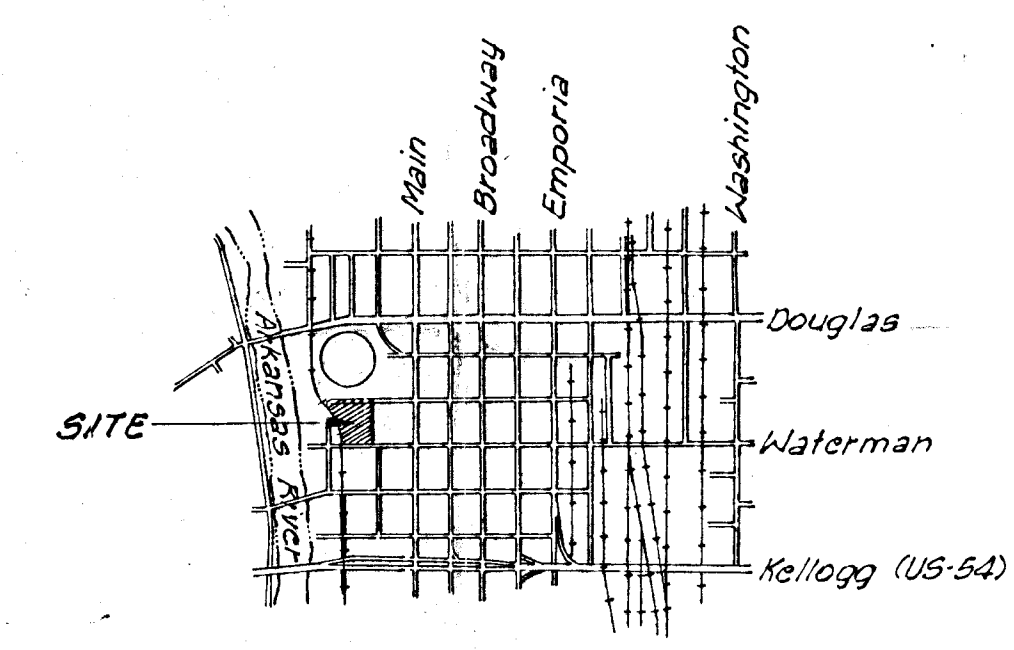


Scale: 1"=60'  
September 12, 1983

BM- Arkansas River & Douglas - U.S.G.S.  
Gaging Sta. Disc, southeast corner  
bridge. Elev. 116.80 City Datum

BM- Arkansas River & Lewis - City of  
Wichita Bench Mark Disc, sidewalk  
northeast corner bridge.  
Elev. 112.68 City Datum

Date of Topography - February, 1983



VICINITY MAP  
1"=2000'

Owner: City of Wichita  
% James Clancy  
Director of Community Facilities  
Century II - 255 N. Douglas 67202  
Board of Park Commissioners  
% Tom Allen  
Director of Parks  
455 N. Main  
Wichita, Ks. 67202

Engineer: Professional Engineering Consultants, P.A.  
1440 E. English  
Wichita, Kansas 67211