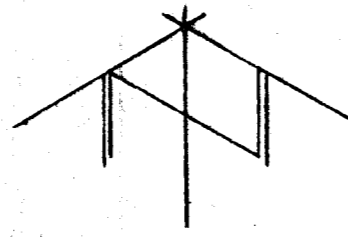
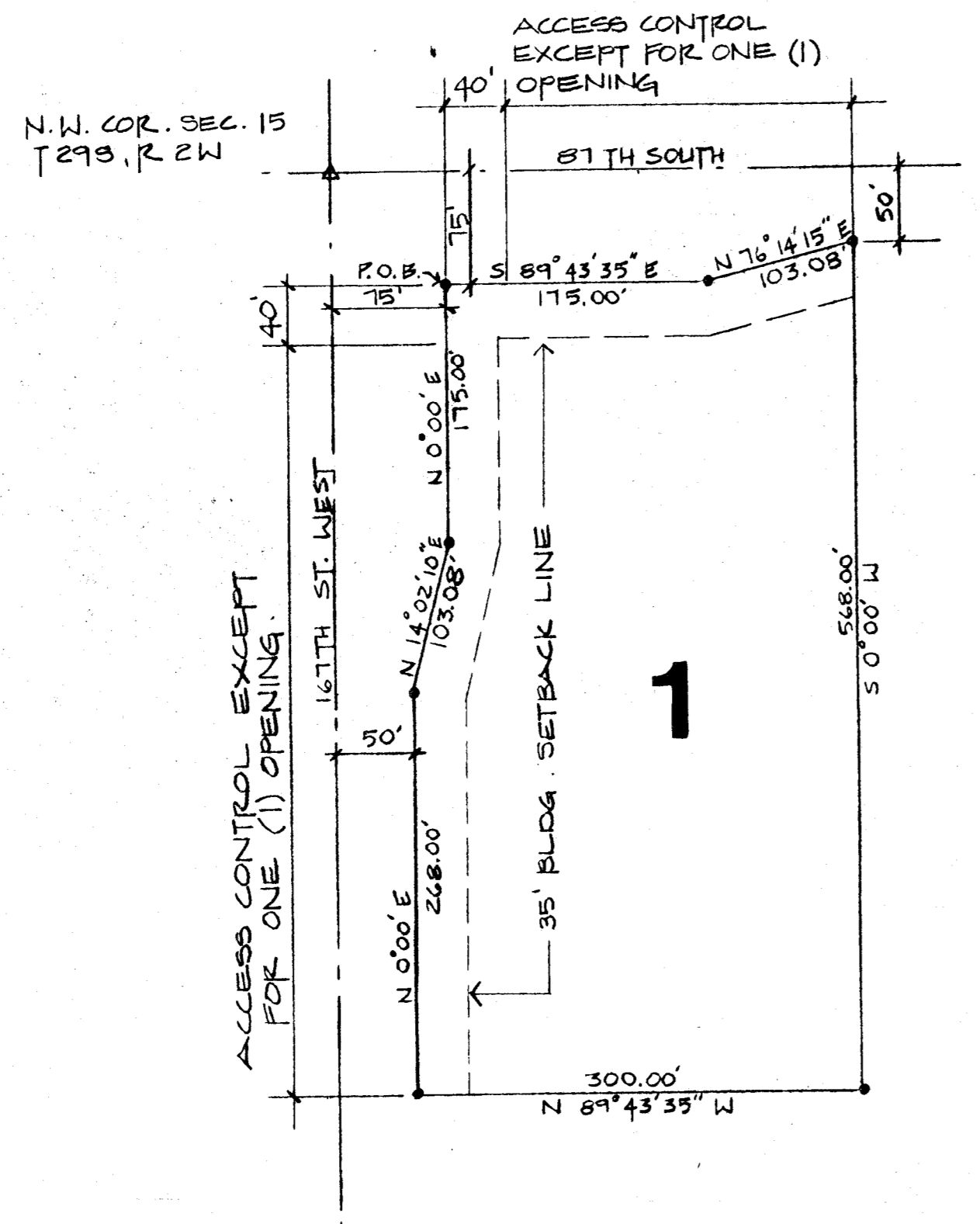


# Clearwater Substation

Sedgwick County, Kansas



SCALE ~ 1" = 100'

• IKON SET

STATE OF KANSAS SS  
COUNTY OF SEDGWICK

I, John J. Hall, Land Surveyor in the afore said county and state do hereby certify that I have surveyed and platted "Clearwater Substation" to Sedgwick County, Kansas, and that the accompanying plat is a true and correct exhibit of the property described in the Legal Description.

John J. Hall LS #341 Date \_\_\_\_\_

**LEGAL DESCRIPTION:**

A tract of land in the Northwest Quarter of Section 15, Township 29 South, Range 2 West of the Sixth Principal Meridian, Sedgwick County, Kansas, being more particularly described as follows:  
From the Northwest corner of said Northwest Quarter, S 89°43'35" E on the North line of said Northwest Quarter, 75.00 feet;  
thence S 0°00' W a distance of 75.00 feet to the POINT OF BEGINNING;  
thence S 89°43'35" E a distance of 175.00 feet;  
thence N 76°14'15" E a distance of 103.08 feet;  
thence S 0°00' W a distance of 568.00 feet;  
thence N 89°43'35" W a distance of 300.00 feet;  
thence N 0°00' E a distance of 268.00 feet;  
thence N 14°02'10" E a distance of 103.08 feet;  
thence N 0°00' E a distance of 175.00 feet to the POINT OF BEGINNING.

Know all men by these presents that we, the undersigned, have caused the Land described in the Legal Description to be platted into a Lot to be known as "Clearwater Substation" to Sedgwick County, Kansas. The streets are hereby dedicated to and for the use of the public. All abutters rights of access to or from 87th Street South over and across the North line of Lot 1, and to or from 167th Street West over and across the West line of Lot 1 are hereby granted to Sedgwick County, Kansas, except that Lot 1 shall have access to 87th Street South at one location, and 167th Street West at one location to be determined by the Sedgwick County Engineer.

\_\_\_\_\_  
Ralph P. Fiebach President

\_\_\_\_\_  
W. B. Walker Secretary

STATE OF KANSAS SS  
COUNTY OF SEDGWICK

Be it remembered that on this \_\_\_\_\_ day of \_\_\_\_\_, 19\_\_\_\_ before me a Notary Public in aforesaid State and County came Ralph P. Fiebach and W. B. Walker, to me personally known to be the same persons who executed the foregoing instrument of writing and duly acknowledged the execution of the same. In testimony whereof I have hereunto set my hand and affixed my Notarial seal the day and year above written.

\_\_\_\_\_  
Notary Public

My Commission Expires \_\_\_\_\_

This plat of "Clearwater Substation" to Sedgwick County, Kansas has been submitted to and approved by the Wichita - Sedgwick County Metropolitan Area Planning Commission, Wichita, Kansas.

Dated this \_\_\_\_\_ day of \_\_\_\_\_, 19\_\_\_\_.

WICHITA-SEDGWICK COUNTY METROPOLITAN AREA PLANNING COMMISSION

\_\_\_\_\_  
Chairman

Marjorie L. Taylor

\_\_\_\_\_  
Secretary

Robert A. Lakin

This plat approved and all dedications shown hereon, if any, accepted by the Board of County Commissioners of Sedgwick County, Kansas, this \_\_\_\_\_ day of \_\_\_\_\_, 19\_\_\_\_.

\_\_\_\_\_  
Chairman

Tom Scott

\_\_\_\_\_  
Commissioner

John Hale

\_\_\_\_\_  
Commissioner

Everett Patrick

ATTEST: \_\_\_\_\_  
County Clerk

Dorothy K. White

STATE OF KANSAS SS  
COUNTY OF SEDGWICK

This is to certify that this instrument was filed for record in the Register of Deeds Office at \_\_\_\_\_ on the \_\_\_\_\_ day of \_\_\_\_\_, 19\_\_\_\_.

\_\_\_\_\_  
Register of Deeds

Bette F. McCart

\_\_\_\_\_  
Deputy

Pat Kettler

Recorded in the Records this \_\_\_\_\_ day of \_\_\_\_\_, 19\_\_\_\_.

\_\_\_\_\_  
County Clerk

Dorothy K. White