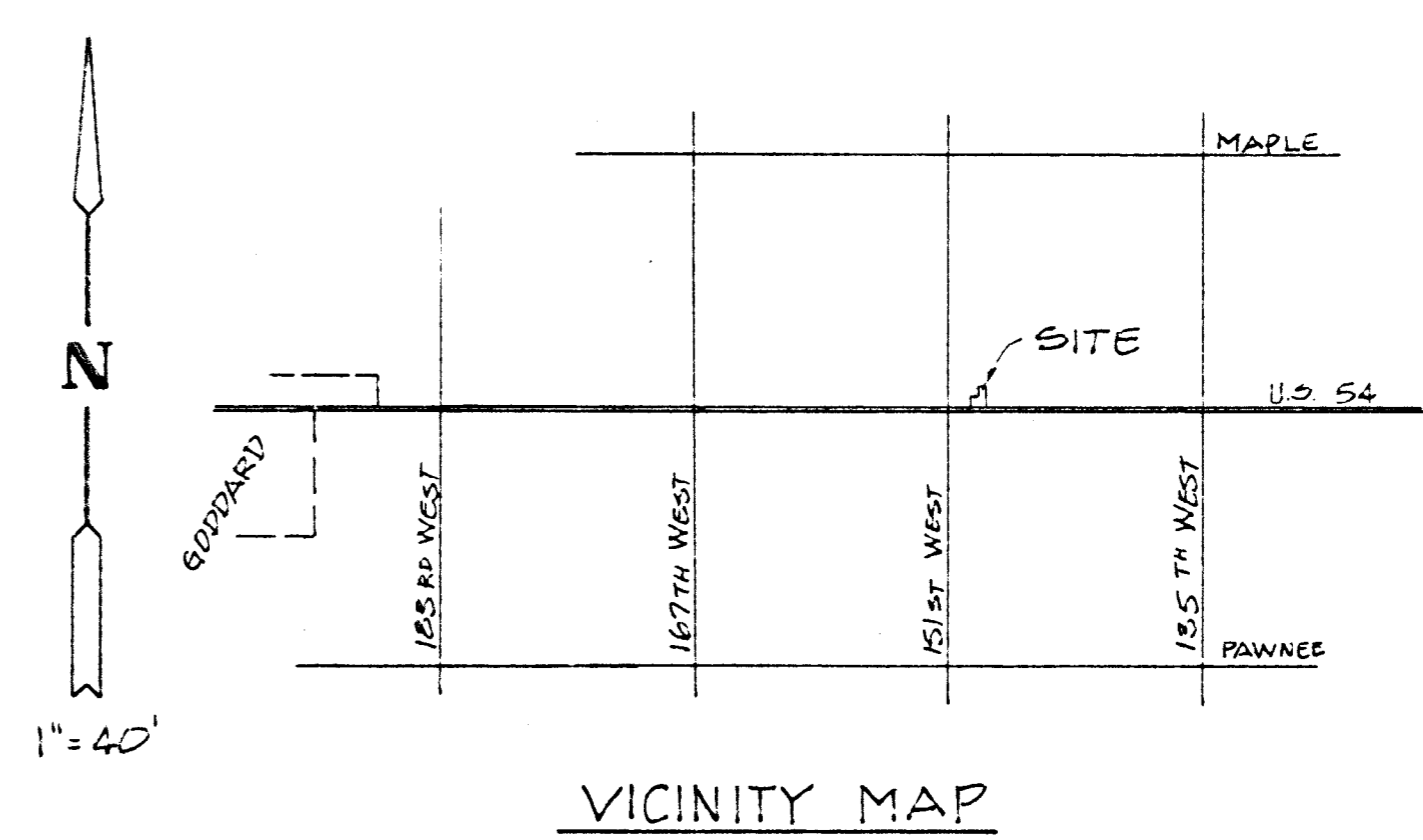


BENCH MARK:
 R.R. SPIKE IN POWER POLE 43'E.
 OF S.W. PROP. COR., ELEV. 1392.45 MSL
 (ADD 1300 TO SPOT ELEVATIONS)

ZONING:
 "R-1" TO "C" APPROVED
 ADJACENT ZONE "R-1"



PRELIMINARY PLAT
DON COLEMAN ADDITION
 To Sedgwick County, Kansas

LEGAL DESCRIPTION:
 A TRACT IN THE S.W. 1/4 OF SEC. 26, T27S, R2W, BEG-
 INNING AT A POINT ON THE NORTH R/W LINE OF U.S. 54
 HIGHWAY, 480' E. OF THE WEST LINE OF SAID S.W. 1/4; THENCE
 EAST 264'; THENCE NORTH 330'; THENCE WEST 264'; THENCE
 SOUTH 330' TO THE POINT OF BEGINNING, EXCEPT THE NORTH
 165' OF THE WEST 132' THEREOF.

MOEHRING & ASSOCIATES
CONSULTING ENGINEERS
 WICHITA
 81-140-SD December 1982

